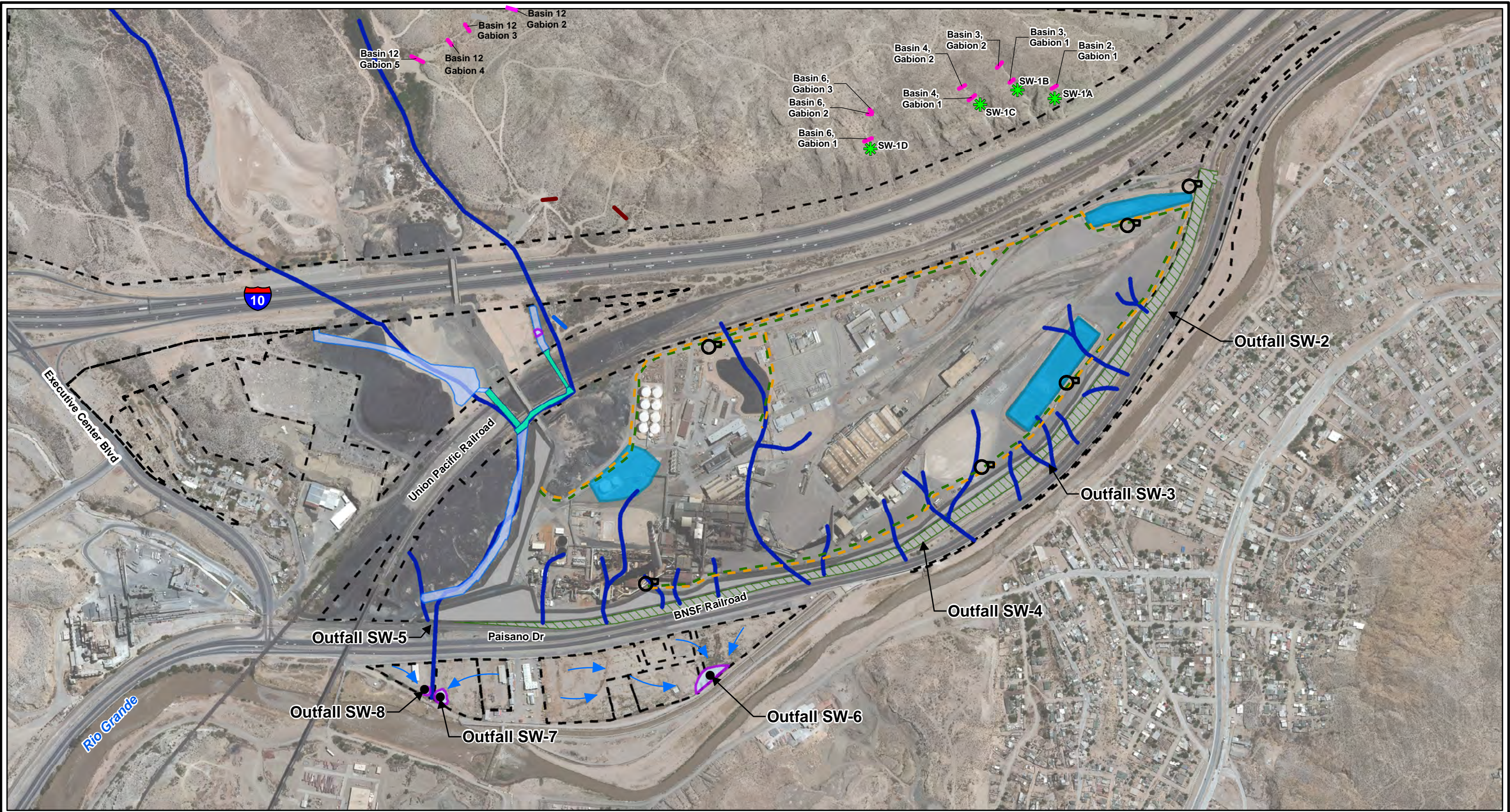


note that this figure has been hand revised to include Basin 12 Gabions 1 through 5

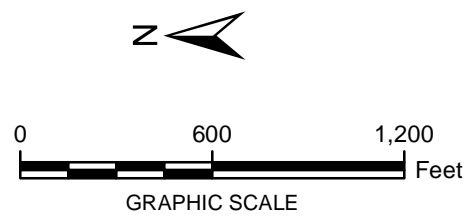


CITY: Highlands Ranch DIV/GROUP: GIS DB: BG
 Project: (Project #)
 Path: Z:\GIS\PROJECTS\ENVASARCO_EIPaso\GIS\MXD\RAPRevised\Fig 11 StormwaterControlSummary.mxd Date: 8/15/2016 Time: 5:22:14 PM

LEGEND:

- Existing Gabions
- Proposed Gabions
- Proposed Gabion or Equivalent, As Needed
- Historical Arroyo Trace Lines (subsurface)
- Property Boundary
- Stormwater sewer line
- Stormwater Pumpstation
- Stormwater BMP Feature
- Lined Stormwater Retention Pond
- Lined Channel with Culverts
- Slope Stabilization and Drainage Improvements, On-site
- Affected Off-Site Property (See Note 1)
- ★ Stormwater Gabion Sample Locations
- Outfall Sample Locations
- Surface Water Flow Path on Floodplain

- Proposed Off-Site Improvements by Others
 - ★ Stormwater Gabion Sample Locations
 - Outfall Sample Locations
 - Surface Water Flow Path on Floodplain
- Note:
 1. Details of Response action will be coordinated with off-site property owner.
 2. Date of Aerial Photo: 2009



FORMER EL PASO SMELTER SITE
EL PASO, TEXAS

**STORMWATER CONTROL
SUMMARY**

**FIGURE
11**