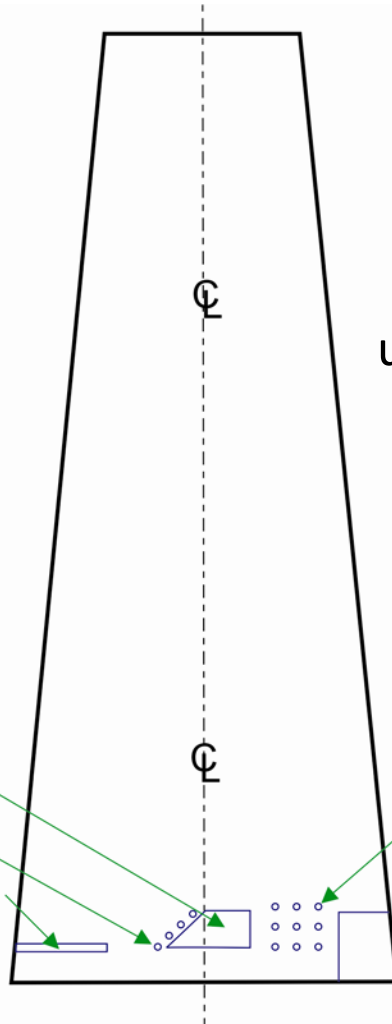


# Chimney Explosive Demolition: The Basics

**1**  
Steel at the base of the chimney opposite the direction of fall is cut prior to the blast.

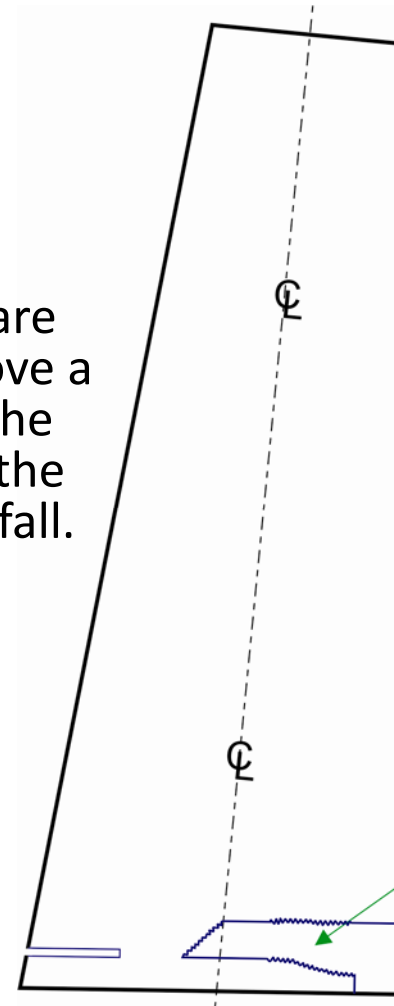
CUT OUT BOTH SIDES  
LINE DRILL  
CUT SLOT TO EXPLODE STEEL & TORCH CUT DAY OF SHOT



**2**  
Explosives are used to remove a section of the chimney in the direction of fall.



1 1/2" - 1 3/4" DIA. HOLES  
DEPTH = 3/4" OF SHELL  
THICKNESS



AREA REMOVED BY EXPLOSIVES

**3**  
The chimney falls like a tree.