

Weekly Construction Progress Report #72

Period: 4/14/13 through 4/20/13

Project Work Performed:

- Continued interim construction survey staking to identify subgrade elevations.
- Continued compliance monitoring including air monitoring, weather monitoring, SWPPP monitoring and fugitive dust monitoring.
- Continued to collect field nuclear density testing to confirm compaction requirements.
- Completed site preparation activities associated with Category II relocation to the Southwest Fill Area. Activities will include punching holes in existing surficial concrete/asphalt, removing surface debris, installing soil erosion and sedimentation control BMPs and development of a temporary haul route along the east haul road in anticipation of stack demolition activities and work to be completed by the EPWU contractor.
- Began the relocation of Category II materials from Stockpile #2 to the Southwest Fill Area.
- Began the excavation of geosynthetic material anchor trenches associated with the Category I Landfill.
- Began the installation of a 6-inch prepared subgrade layer.
- Continued processing existing crushed concrete to remove excess woody and metal debris.

Work Projected Next Week:

- Continue interim construction survey staking to identify subgrade elevations.
- Continue compliance monitoring including air monitoring, weather monitoring, SWPPP monitoring and fugitive dust monitoring.
- Continue to collect field nuclear density testing to confirm compaction requirements.
- Complete the excavation of geosynthetic material anchor trenches associated with the Category I Landfill.
- Complete the installation of a 6-inch prepared subgrade layer.
- Continue processing existing crushed concrete to remove excess woody and metal debris.
- Continue the relocation of Category II materials from Stockpile #2 to the Southwest Fill Area.

Former ASARCO Smelter Facility

Site Wide Construction Activities

El Paso, TX



Placement of Category II material within the SW Fill Area.



Installation of 6-inch prepared subgrade layer within Category 1 Landfill



Moisture conditioning of 6-inch prepared subgrade layer within Category 1 Landfill

Weekly Construction Progress Report #72 (Continued)

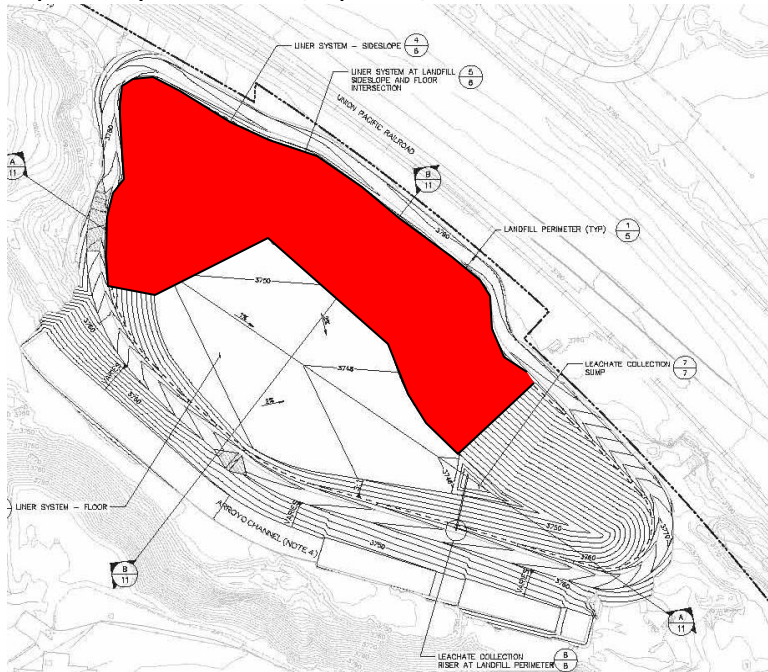
Period: 4/14/13 through 4/20/13

Action Items/Safety:

- Loss Prevention System (LPS) tools
 - Loss Prevention Observation (LPO) – 2 (137)
 - Job Safety Analysis (JSAs) – 0 (10)
 - Near Loss – 0 (10)
 - Minor Equipment Damage – 0 (4)
 - Incidents – 0 (2)
 - Stop Work Authority 0 – (7)



Prepared by EJ Suardini, April 24, 2013



Grading of 6-inch prepared subgrade layer within Category 1 Landfill

Progress Legend

Red – Installed 6-inch prepared subgrade layer

Estimated Weekly Volume

	Estimated Quantity of CAT II Placement (Tons)	Estimated Quantity of East Borrow Excavation (Tons)	Estimated Quantity of 6-inch prepared subgrade Installed (Tons)	Estimated Quantity of Structural Fill Material Installed PBA and CAT 1 (Tons)	Estimated Quantity of South Stack Berm Material (Tons)
Weekly Total	2,500	0	4,000	0	0
Total to Date	110,740	41,880	4,000	228,340	31,920