

Weekly Construction Progress Report #28

Period: 5/20/12 through 5/26/12

Project Work Performed:

- Continued interim construction survey staking to identify subgrade elevations
- Continued the mass excavation, loading, hauling and stockpiling of materials from within the Category 1 Landfill footprint.
- Continued rough grading of the Category 1 Landfill side slopes and floor.
- Continue breaking the remaining material from within the Category 1 Landfill footprint.
- Continued excavation of diesel impacted soils located in the northeast corner of the Category 1 Landfill footprint.
- Continued managing mass excavation materials within the stockpiles located near the former Zinc Plant.
- Continued the removal of slag material outside of the southwest corner of the Category 1 Landfill footprint.
- Continued compliance monitoring including air monitoring, weather monitoring, SWPPP monitoring and fugitive dust monitoring.
- Field activities were suspended from May 25th through May 29th in observance of Memorial Day.

Work Projected Next Week:

- Continue interim construction survey staking to identify subgrade elevations.
- Continue the mass excavation, loading, hauling and stockpiling of materials from within the Category 1 Landfill footprint.
- Continue rough grading of the Category 1 Landfill side slopes and floor.
- Continue excavation of diesel impacted soils located in the northeast corner of the Category 1 Landfill footprint.
- Continue breaking the remaining material from within the Category 1 Landfill footprint.
- Continue managing mass excavation materials within the stockpiles located near the former Zinc Plant.
- Continue the removal of slag material outside of the southwest corner of the Category 1 Landfill footprint.
- Continue compliance monitoring including air monitoring, weather monitoring, SWPPP monitoring and fugitive dust monitoring.

Former ASARCO Smelter Facility

Category 1 Landfill Construction

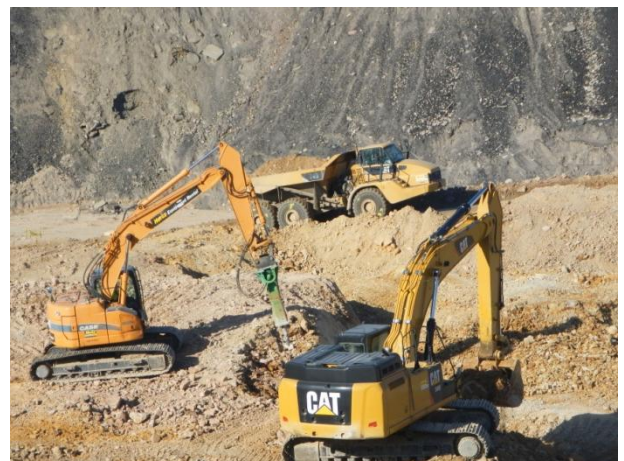
El Paso, TX



Excavation activities within the Category 1 Landfill footprint



Excavation, loading and grading activities within the Category 1 Landfill footprint



Excavation and breaking activities within the Category 1 Landfill footprint

Weekly Construction Progress Report #28 (Continued)

Period: 5/20/12 through 5/26/12

Action Items/Safety:

- Loss Prevention System (LPS) tools
 - Loss Prevention Observation (LPO) – 2 (52)
 - Job Safety Analysis (JSAs) – 0 (5)
 - Near Loss – 0 (5)
 - Minor Equipment Damage – 0 (3)
 - Incidents – 0 (2)
 - Stop Work Authority 0 – (7)

Prepared by EJ Suardini, May 30, 2012



Hauling Cat 1 Landfill materials to stockpile area.

Progress Legend

**Blue – (Complete)
Excavation of Slag**

**Green – (Complete)
Excavation of Impacted soil
beneath Slag**

Red – Mass Excavation Activity

**Red (Hatch) – Current Work
Area**

**Orange – Removed
Sanitary/Storm Sewer Piping**

**Purple – Earthen Buttress
(Complete)**



Estimated Weekly Volume				
	Estimated Quantity of Slag Removed (Tons)	Estimated Quantity of Mass Excavation (Tons)*	Estimated Quantity of Toe Berm Material Installed (Tons)	Estimated Quantity of Subgrade Prepared (Tons)
Weekly Total	7,760	120	0	0
Total to Date	298,067	291,963	0	0

***Quantity includes the excavation of soil impacted material beneath slag.**