

Weekly Construction Progress Report #83

Period: 7/1/13 through 7/14/13

Project Work Performed:

- Continued interim construction survey staking to identify subgrade elevations.
- Continued compliance monitoring including air monitoring, weather monitoring, SWPPP monitoring and fugitive dust monitoring.
- Continued to excavate, load, haul, place and compact Category II materials from current stockpiles to the Mill Basement.
- Continued to collect field nuclear density testing to confirm compaction requirements.
- Continued plant slope stabilization activities. Activities will include the removal of loose material from the slope in Area 1 and backfilling Area 3.
- Continued to screen select protective layer materials to be placed within the CAT I Landfill. Materials will be screened to meet the technical specifications identified within the Construction Quality Assurance Plan (CQAP).
- Continued the excavation of anchor trenches along the landfill side PBA slopes in preparation of geosynthetic and ACB installation.
- Site construction activities were suspended from July 3rd through July 8th in observance of the holiday.

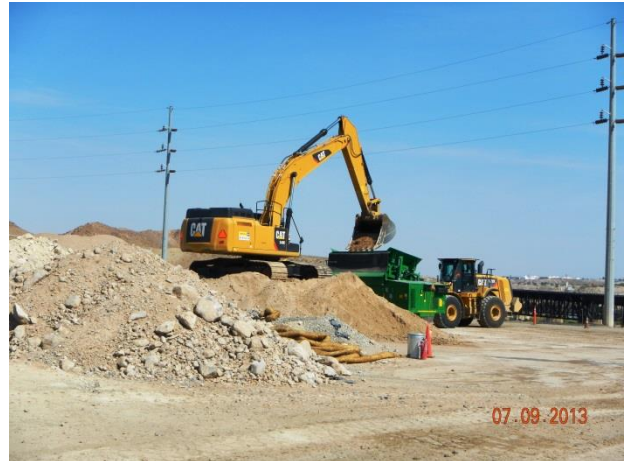
Work Projected Next Week:

- Continue interim construction survey staking to identify subgrade elevations.
- Continue compliance monitoring including air monitoring, weather monitoring, SWPPP monitoring and fugitive dust monitoring.
- Continue plant slope stabilization activities. Activities will include the removal of loose material from the slope in Area 1 and backfilling Area 3.
- Continue to screen select protective layer materials to be placed within the CAT I Landfill. Materials will be screened to meet the technical specifications identified within the Construction Quality Assurance Plan (CQAP).
- Continue the excavation of anchor trenches along the landfill side PBA slopes in preparation of geosynthetic and ACB installation.
- Begin the installation of 60-mil HDPE along the PBA Channel landfill side slope in preparation of ACB installation.

Former ASARCO Smelter Facility

Site Wide Construction Activities

El Paso, TX



Screening select protective layer materials to be placed within the CAT 1 Landfill



Backfill activities within a former plant basement



Subgrade preparation along PBA Channel slope

Weekly Construction Progress Report #83 (Continued)

Period: 7/1/13 through 7/14/13

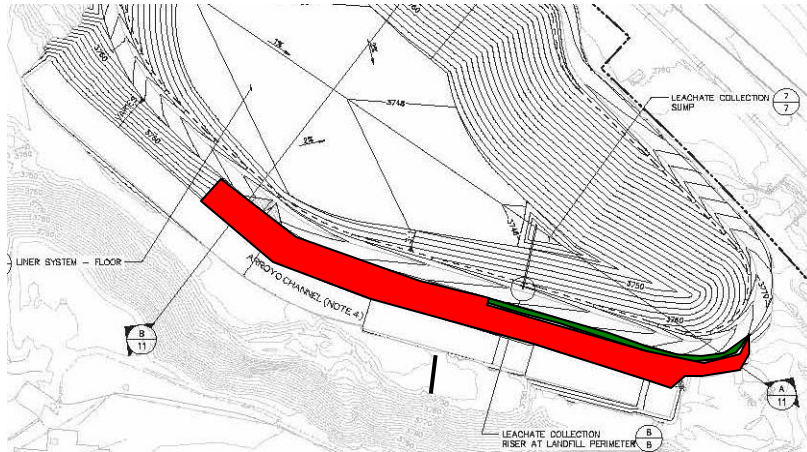
Action Items/Safety:

- Loss Prevention System (LPS) tools
 - Loss Prevention Observation (LPO) – 2 (159)
 - Job Safety Analysis (JSAs) – 0 (10)
 - Near Loss – 0 (10)
 - Minor Equipment Damage – 0 (6)
 - Incidents – 0 (2)
 - Stop Work Authority 0 – (7)

Prepared by EJ Suardini, July 16, 2013



PBA Channel current conditions



Progress Legend

Red - Prepared FML subgrade

Green - Excavated geosynthetic/ACB anchor trench

Estimated Weekly Volume							
	Estimated Quantity of CAT II Placement (Tons)	Estimated Quantity of East Borrow Excavation (Tons)	Estimated Quantity of 2-Foot Protective Layer Installed (Tons)	Estimated Quantity of Loose Slag Removed from Area 3 of Plant Slope (Tons)	Estimated Quantity of GCL (Square Feet)	Estimated Quantity of FML (Square Feet)	Estimated Quantity of GDC (Square Feet)
Weekly Total	2,320	0	0	1,280	0	0	0
Total to Date	137,180	41,880	14,180	2,320	207,225	207,225	58,500