

Weekly Construction Progress Report #4

Period: 11/14/11 through 11/20/11

Project Work Performed:

- Continued to mobilize select heavy equipment and ARCADIS labor to the site. Site personnel were provided a site health and safety orientation.
- Continued the excavation, loading, hauling and stockpiling of slag material from within the Category 1 Landfill footprint to the designated staging area.
- Began soil screening using XRF and collecting soil samples for laboratory analysis. A general 2-foot cut was excavated over the entire landfill footprint.
- Began the excavation, loading, hauling and stockpiling of targeted mass excavation materials.
- Continued interim construction survey staking to identify final subgrade elevations.
- Continued compliance monitoring including air monitoring, weather monitoring, SWPPP monitoring and fugitive dust monitoring.

Work Projected Next Week:

- Continue the excavation, loading, hauling and stockpiling of targeted mass excavation materials.
- Continue interim construction survey staking to identify subgrade elevations
- Continue compliance monitoring including air monitoring, weather monitoring, SWPPP monitoring and fugitive dust monitoring.
- No construction activities are anticipated from November 23rd through November 26th due to the Thanksgiving holiday weekend.

Former ASARCO Smelter Facility

Category 1 Landfill Construction

El Paso, TX



Loading targeted mass excavation materials from within the Category 1 Landfill footprint.



Excavation activities within the Category 1 Landfill footprint.



Fugitive dust control within Category 1 Landfill footprint.

Weekly Construction Progress Report #4 (Continued)

Period: 11/14/11 through 11/20/11

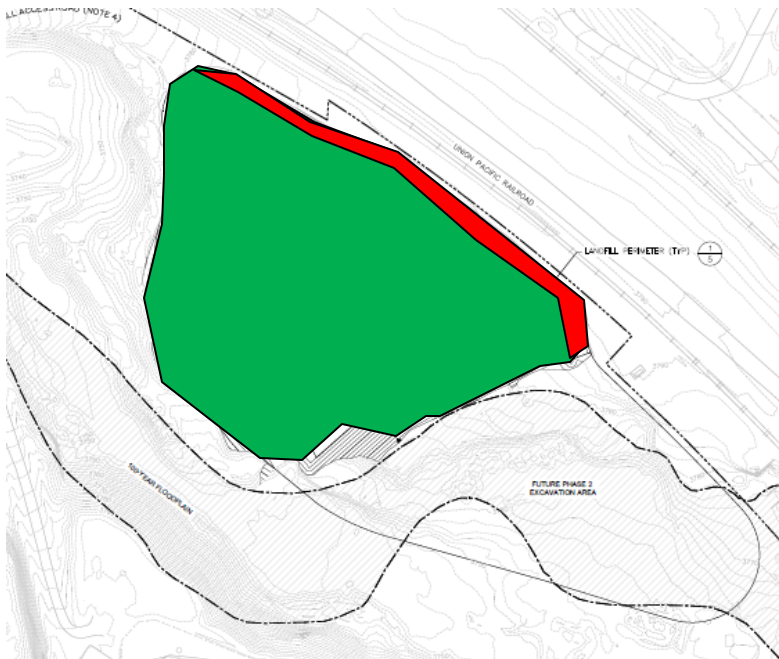
Action Items/Safety:

- Loss Prevention System (LPS) tools
 - Loss Prevention Observation (LPO) – 1 (4)
 - Job Safety Analysis (JSAs) – 0 (3)
 - Near Loss – 0 (2)
 - Incidents – 1 (1)
 - Stop Work Authority 0 – (2)

Prepared by EJ Suardini, November 21, 2011



Current conditions of the Category 1 Landfill.



Progress Legend

**Blue –
Excavation of
Slag Complete**

**Green –
Excavation of
Impacted soil
beneath Slag**

**Red – Mass
Excavation
Activity**

Estimated Weekly Volume

	Estimated Quantity of Slag Removed (Tons)	Estimated Quantity of Mass Excavation (Tons)*	Estimated Quantity of Toe Berm Material Installed (Tons)	Estimated Quantity of Subgrade Prepared (Tons)
Weekly Total	3,580	22,675	0	0
Total to Date	26,155	22,675	0	0

*Quantity includes the excavation of soil impacted material beneath slag.