

### Weekly Construction Progress Report #53

Period: 11/25/12 through 12/1/12

#### Project Work Performed:

- Continued interim construction survey staking to identify subgrade elevations.
- Continued compliance monitoring including air monitoring, weather monitoring, SWPPP monitoring and fugitive dust monitoring.
- Continued to screen and process CAT II soils to meet structural fill material conformance specifications associated with the CAT II Placement Plan.
- Continued to load, haul, place, compact and grade CAT II materials within the Ore Unloading Basement.
- Continued to collect field nuclear density testing to confirm compaction requirements.

#### Work Projected Next Week:

- Continue interim construction survey staking to identify subgrade elevations.
- Continue compliance monitoring including air monitoring, weather monitoring, SWPPP monitoring and fugitive dust monitoring.
- Continue to screen and process CAT II soils to meet structural fill material conformance specifications associated with the CAT II Placement Plan.
- Continue to load, haul, place, compact and grade CAT II materials within the Ore Unloading Basement.
- Continue to collect field nuclear density testing to confirm compaction requirements.
- Begin the installation of the POTW tie-in.



*Installation of CAT II soils within the Ore Unloading Basement*



*Placement of CAT II soils within the Ore Unloading Basement*



*Screening of CAT II soils for Ore Unloading Basement*

## Weekly Construction Progress Report #53 (Continued)

**Period:** 11/25/12 through 12/1/12

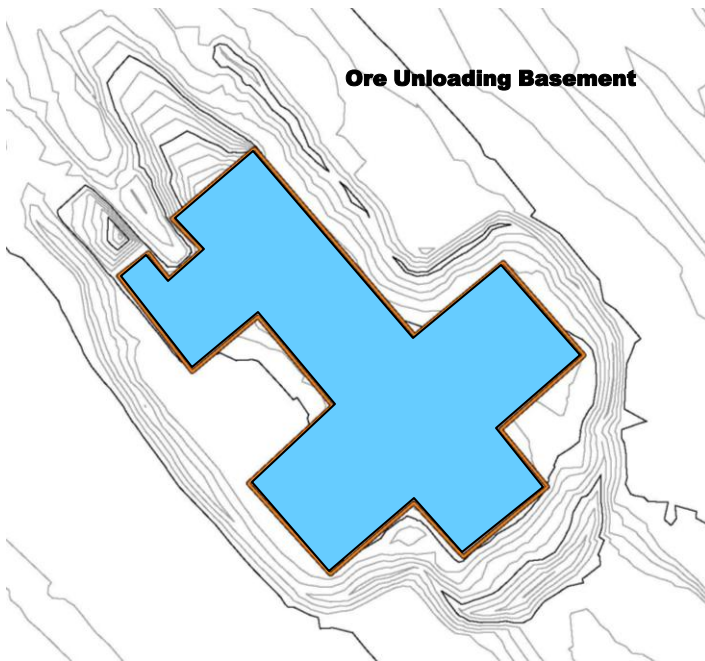
### Action Items/Safety:

- Loss Prevention System (LPS) tools
  - Loss Prevention Observation (LPO) – 2 (100)
  - Job Safety Analysis (JSAs) – 0 (8)
  - Near Loss – 0 (7)
  - Minor Equipment Damage – 0 (3)
  - Incidents – 0 (2)
  - Stop Work Authority 0 – (7)

Prepared by EJ Suardini, December 4, 2012



*Existing sanitary sewer piping associated with future POTW Tie-In*



### Progress Legend

**Blue** – Ongoing placement of structural fill

Estimated Weekly Volume				
	Estimated Quantity of CAT II Placement (Tons)	Estimated Quantity of East Borrow Excavation	Estimated Quantity of Structural Fill Material Installed PBA and CAT 1 (Tons)	Estimated Quantity of Subgrade Prepared (Tons)
Weekly Total	5,840	0	6,400	0
Total to Date	16,480	293,563	186,860	0