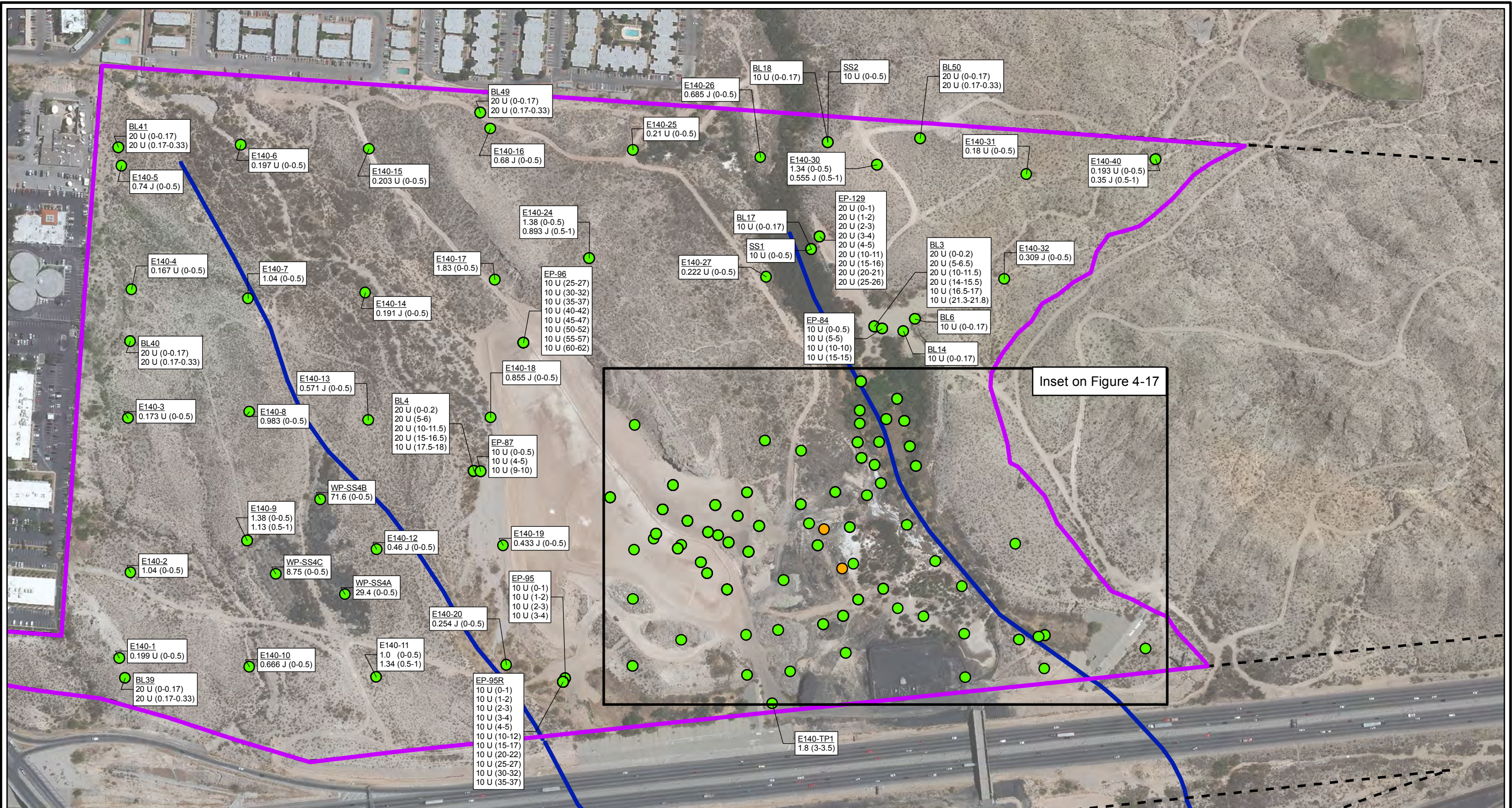


CITY: Highlands Ranch DIV/GROUP: GIS DB: BG
 Project (Project ID):
 Path: G:\GIS\ASARCO_EIPaso\GIS\MXD\RI_Updated\Response To Comments\Fig 4-16 Selenium_SoilLocations_EastProp_1.mxd Date: 4/17/2014 Time: 11:18:16 AM

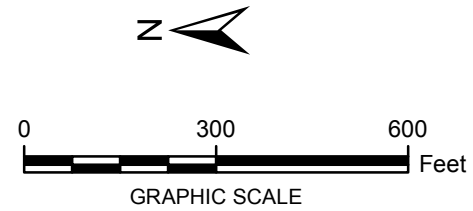


LEGEND:

- DETECTED ≤ SCREENING LEVEL
- DETECTED > SCREENING LEVEL
- HISTORICAL ARROYO TRACE LINES
- - - PROPERTY BOUNDARY
- AREA BOUNDARY

NOTE:
 Screening Level (RRR SAI-Res = 1300 mg/kg)
Bolded Value exceeds screening level
Italics Depth below groundwater
 J = Estimated Value
 U = Not detected at or above reporting limit
 Date of Aerial Photo: 2009

Sample ID
 E140-11
 1.0 (0-0.5)
 1.34 (0.5-1)
 Depth (ft bgs)
 Selenium Concentration in mg/kg



FORMER EL PASO SMELTER SITE
 EL PASO, TEXAS

**SELENIUM DISTRIBUTION IN SOIL
 EAST PROPERTY**

**MALCOLM
 PIRNIE**

**FIGURE
 4-16**