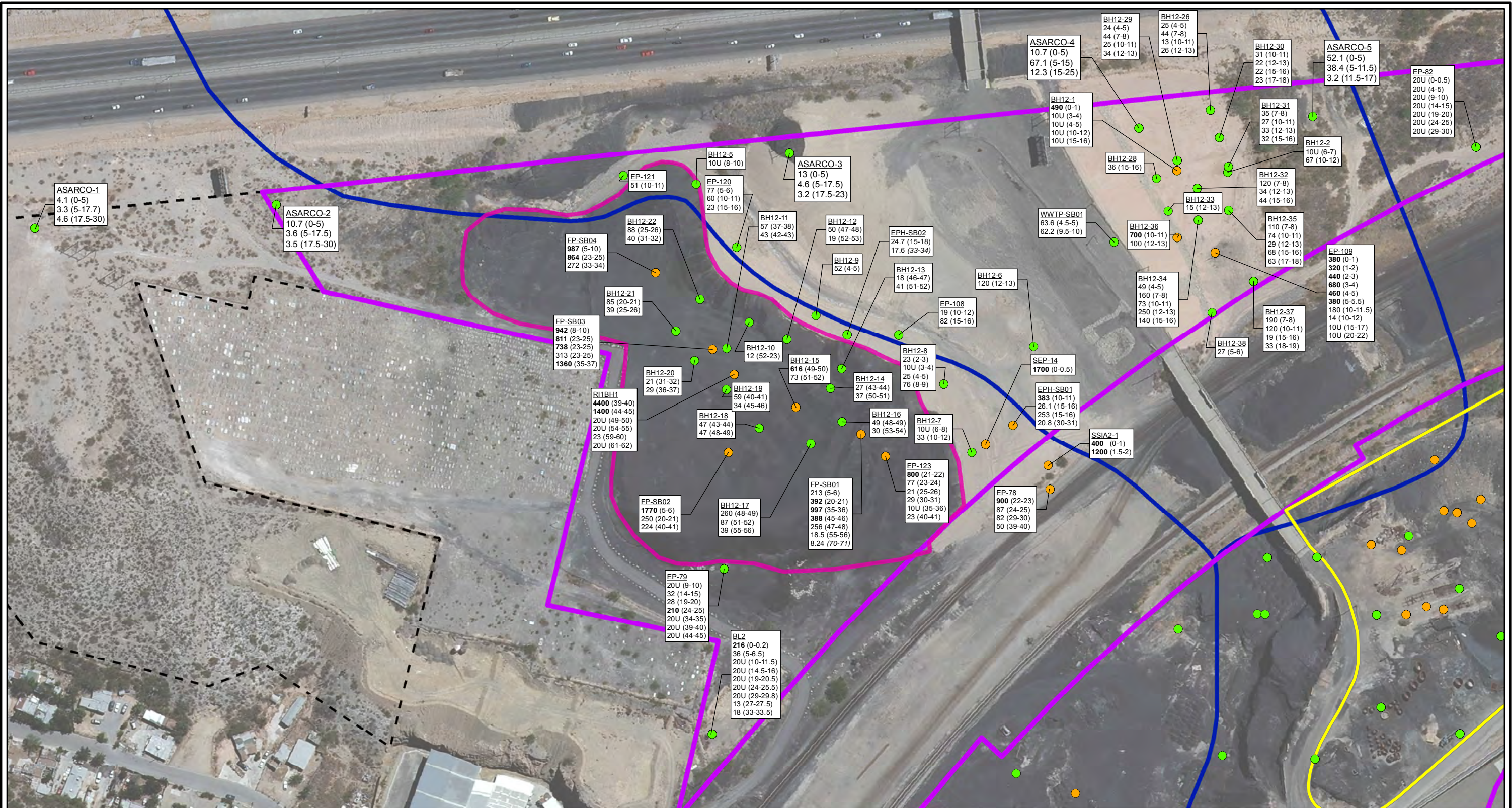
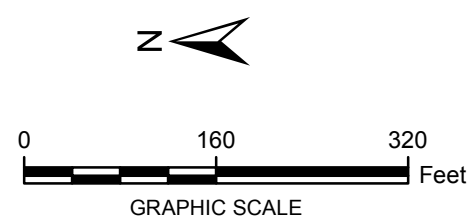
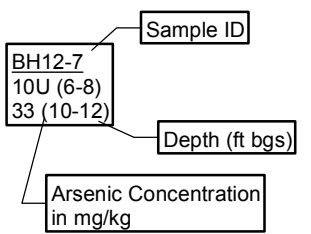


CITY: Highlands Ranch DIV/GROUP: GIS DB: BG  
 Project (Project #):  
 Path: G:\GIS\ASARCO\_EIPaso\GIS\MXD\RII\_Updated\Revisions Oct 2014\Fig 4-19 Arsenic\_Soil\_locations\_PBA1.mxd Date: 10/10/2014 Time: 11:34:06 AM



- LEGEND:**
- DETECTED ≤ SCREENING LEVEL
  - DETECTED > SCREENING LEVEL
  - HISTORICAL ARROYO TRACE LINES
  - - - PROPERTY BOUNDARY
  - AREA BOUNDARY
  - FINES PILE BOUNDARY
  - BONEYARD BOUNDARY

**NOTE:**  
 Screening Level (RRR SAI-Ind = 320 mg/kg)  
**Bolded** Value exceeds screening level  
*Italics* indicate below the water table  
 J = Estimated Value  
 U = Not detected at or above reporting limit  
 Date of Aerial Photo: 2009



FORMER EL PASO SMELTER SITE  
EL PASO, TEXAS

**ARSENIC DISTRIBUTION IN SOIL  
PARKER BROTHERS ARROYO/FINES PILE**

**MALCOLM  
PIRNIE**

**FIGURE  
4-19**