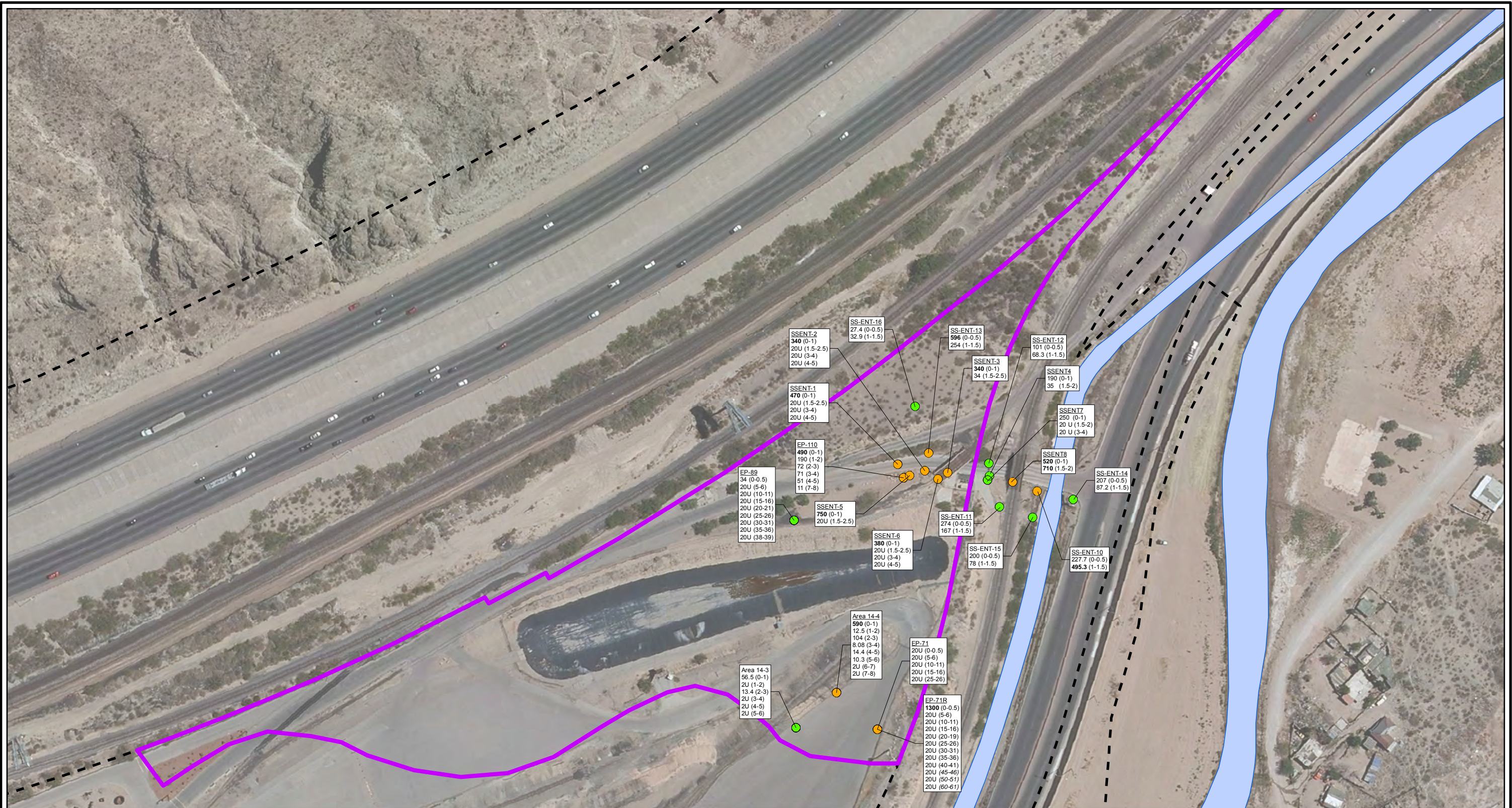


CITY: Highlands Ranch DIV/GROUP: GIS DB: BG
 Project (Project #):
 Path: G:\GIS\ASARCO_EIPaso\GIS\MXD\RI_ Revised\Revisions Oct 2014\Fig 4-28 Arsenic Soil Locations PlantEntrance.mxd Date: 10/13/2014 Time: 11:04:40 AM



- LEGEND:**
- DETECTED ≤ SCREENING LEVEL
 - DETECTED > SCREENING LEVEL
 - HISTORICAL ARROYO TRACE LINES
 - PROPERTY BOUNDARY
 - AREA BOUNDARY

NOTE:
 Screening Level (RRR SAI-Ind = 320 mg/kg)

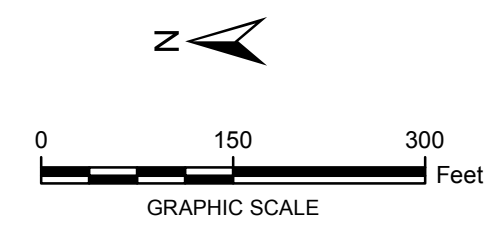
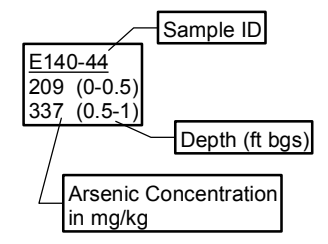
Bolded Value exceeds screening level

Italics indicate below the water table

J = Estimated Value

U = Not detected at or above reporting limit

Date of Aerial Photo: 2009



FORMER EL PASO SMELTER SITE
EL PASO, TEXAS

**ARSENIC DISTRIBUTION IN SOIL
PLANT ENTRANCE**

**MALCOLM
PIRNIE**

**FIGURE
4-28**