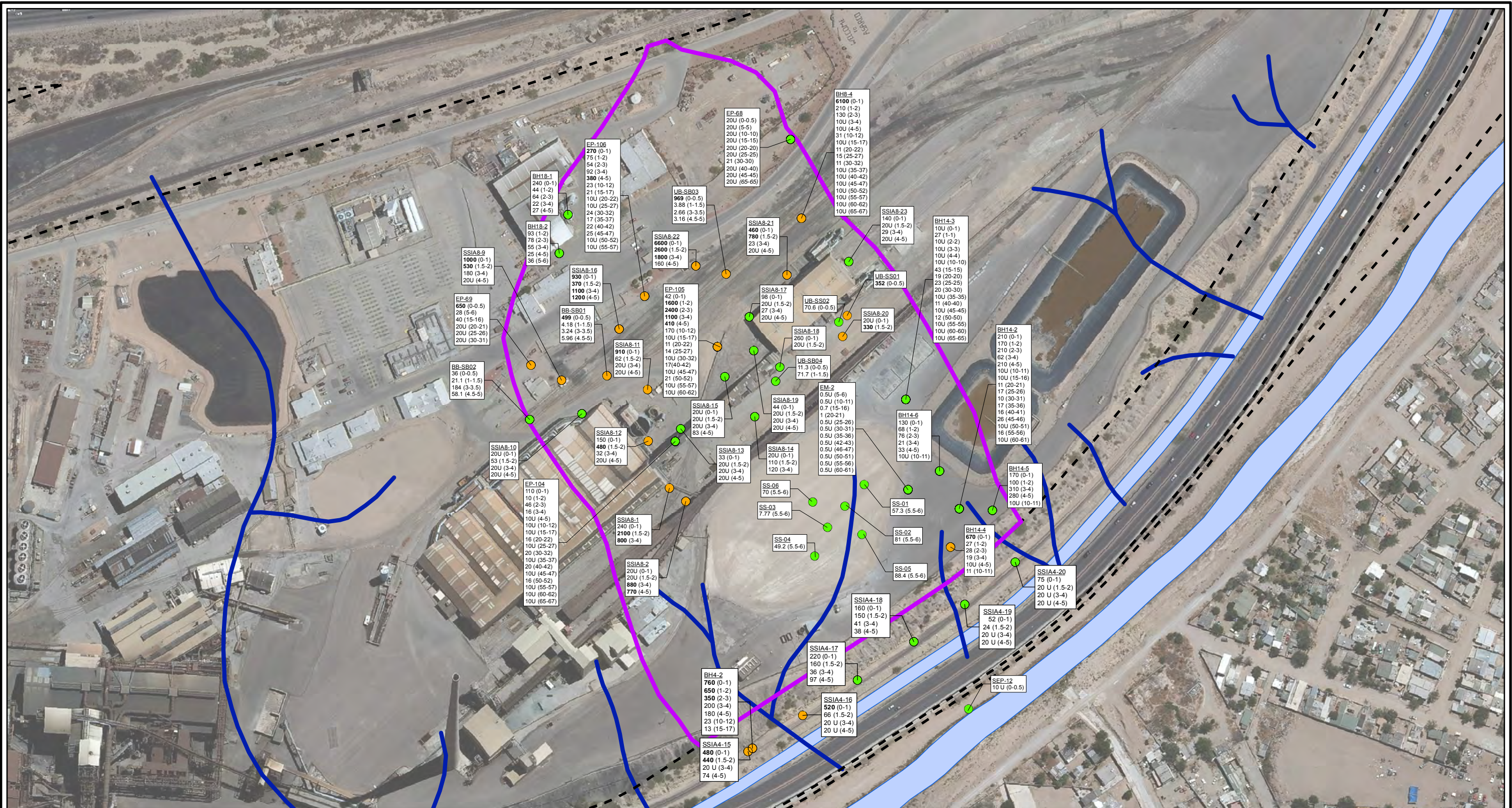


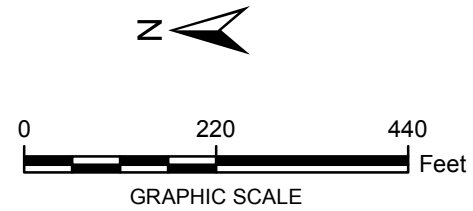
CITY: Highlands Ranch DIV/GROUP: GIS DB: BG
 Project (Project #):
 Path: G:\GIS\ASARCO_ElPaso\GIS\MXDR\Revised\Revisions Oct 2014\Fig 4-35 Arsenic Soil Locations Pond1.mxd Date: 10/10/2014 Time: 11:51:50 AM



- LEGEND:**
- DETECTED ≤ SCREENING LEVEL
 - DETECTED > SCREENING LEVEL
 - HISTORICAL ARROYO TRACE LINES
 - - - PROPERTY BOUNDARY
 - AREA BOUNDARY

NOTE:
 Screening Level (RRR SAI-Ind = 320 mg/kg)
Bolded Value exceeds screening level
Italics indicate below the water table
 J = Estimated Value
 U = Not detected at or above reporting limit
 Date of Aerial Photo: 2009

Sample ID
 UB-SB04
 11.3 (0-0.5)
 71.7 (1-1.5)
 Depth (ft bgs)
 Arsenic Concentration in mg/kg



FORMER EL PASO SMELTER SITE
EL PASO, TEXAS

**ARSENIC DISTRIBUTION IN SOIL
POND 1 ARROYO**

**MALCOLM
PIRNIE**

**FIGURE
4-35**