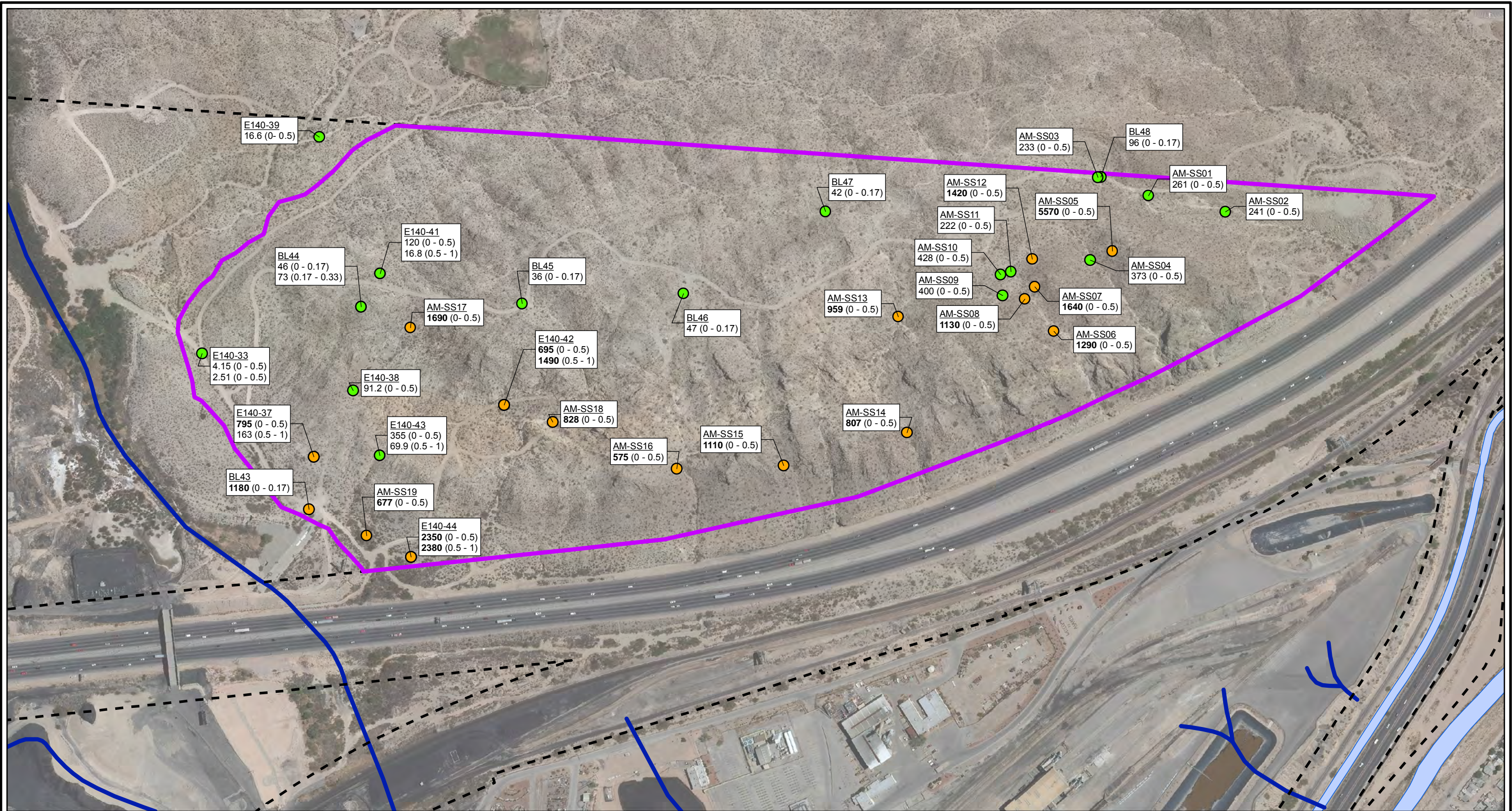


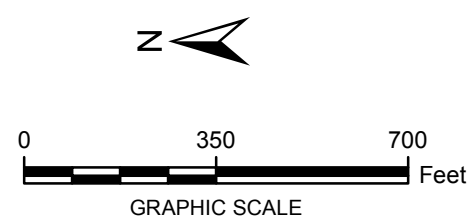
CITY: Highlands Ranch DIV/GROUP: GIS DB: BG
 Project (Project #):
 Path: G:\GIS\ASAPCO_EIPaso\GIS\MXD\DIRI_Updated\Response To Comments\Fig 4-4 Lead_SoilLocations EastMtn.mxd Date: 4/17/2014 Time: 11:33:51 AM



- LEGEND:**
- DETECTED ≤ SCREENING LEVEL
 - DETECTED > SCREENING LEVEL
 - HISTORICAL ARROYO TRACE LINES
 - PROPERTY BOUNDARY
 - AREA BOUNDARY

NOTE:
 Screening Level (RRR SAI-Res = 500 mg/kg)
Bolded Value exceeds screening level
 J = Estimated Value
 U = Not detected at or above reporting limit
 Date of Aerial Photo: 2009

Sample ID
E140-44
2350 (0-0.5)
2380 (0.5-1)
Depth (ft bgs)
Lead Concentration in mg/kg



FORMER EL PASO SMELTER SITE EL PASO, TEXAS	
LEAD DISTRIBUTION IN SOIL EAST MOUNTAIN	
	FIGURE 4-4