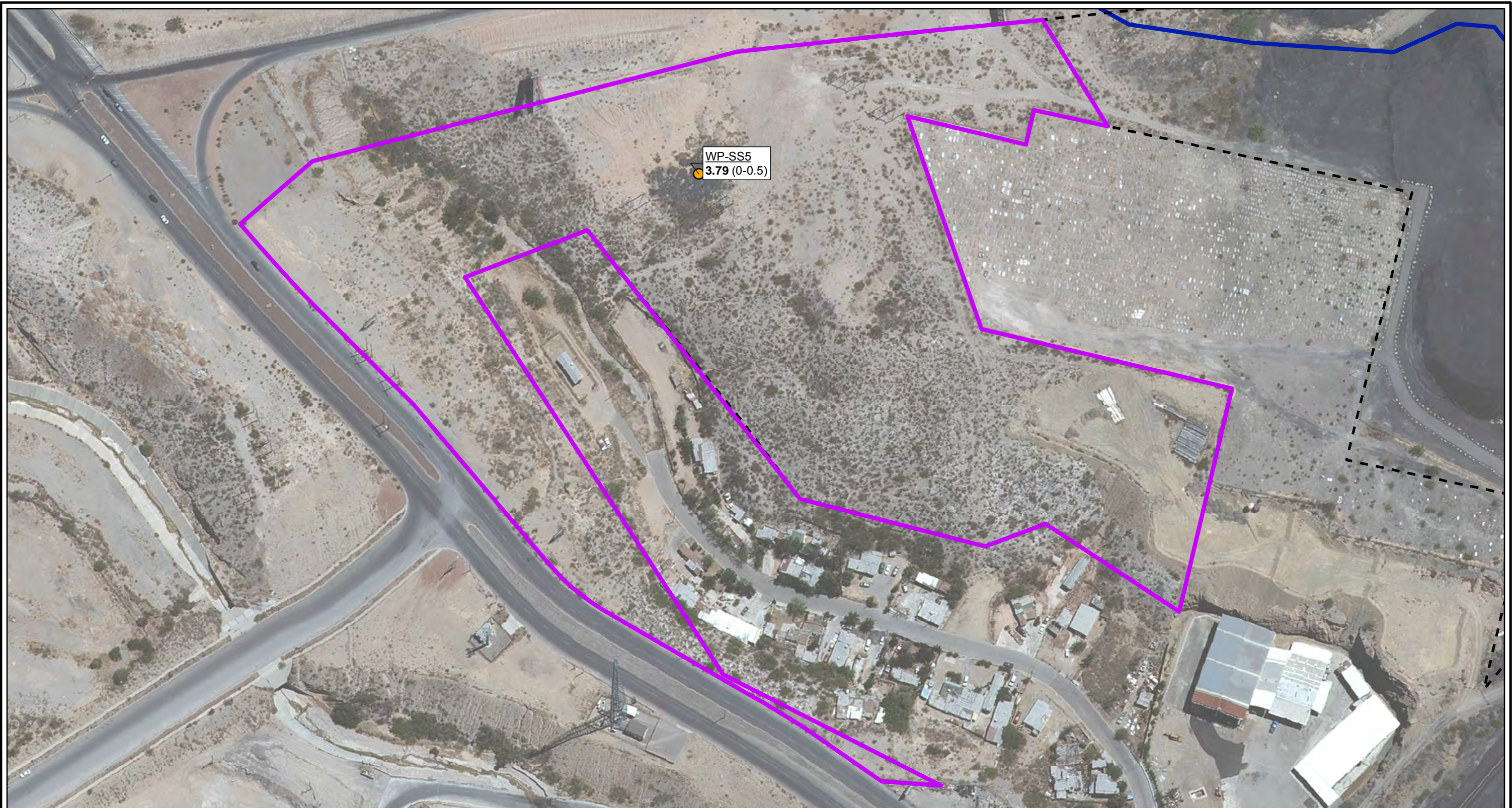


CITY: Highlands Ranch DIV/GROUP: GIS DB: BG
 Project (Project #):
 Path: I:\ASARCO - El Paso\GIS\MXD\RI - Revised\Fig 4-51 Mercury_SoilLocations_LaCalavera.mxd Date: 9/13/2013 Time: 3:37:51 PM



- LEGEND:**
- DETECTED ≤ SCREENING LEVEL
 - DETECTED > SCREENING LEVEL
 - HISTORICAL ARROYO TRACE LINES
 - PROPERTY BOUNDARY
 - AREA BOUNDARY

NOTE:
 Screening Level (RRR SAI-Res = 0.11 mg/kg)

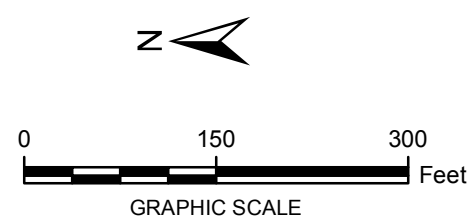
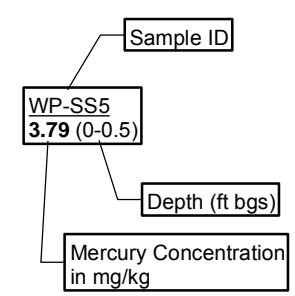
Bolded Value exceeds screening level

Italics indicate below the water table

J = Estimated Value

U = Not detected at or above reporting limit

Date of Aerial Photo: 2009



| | |
|---|------------------------|
| FORMER EL PASO SMELTER SITE EL PASO, TEXAS | |
| MERCURY DISTRIBUTION IN SOIL LA CALAVERA | |
| | FIGURE 4-53 |