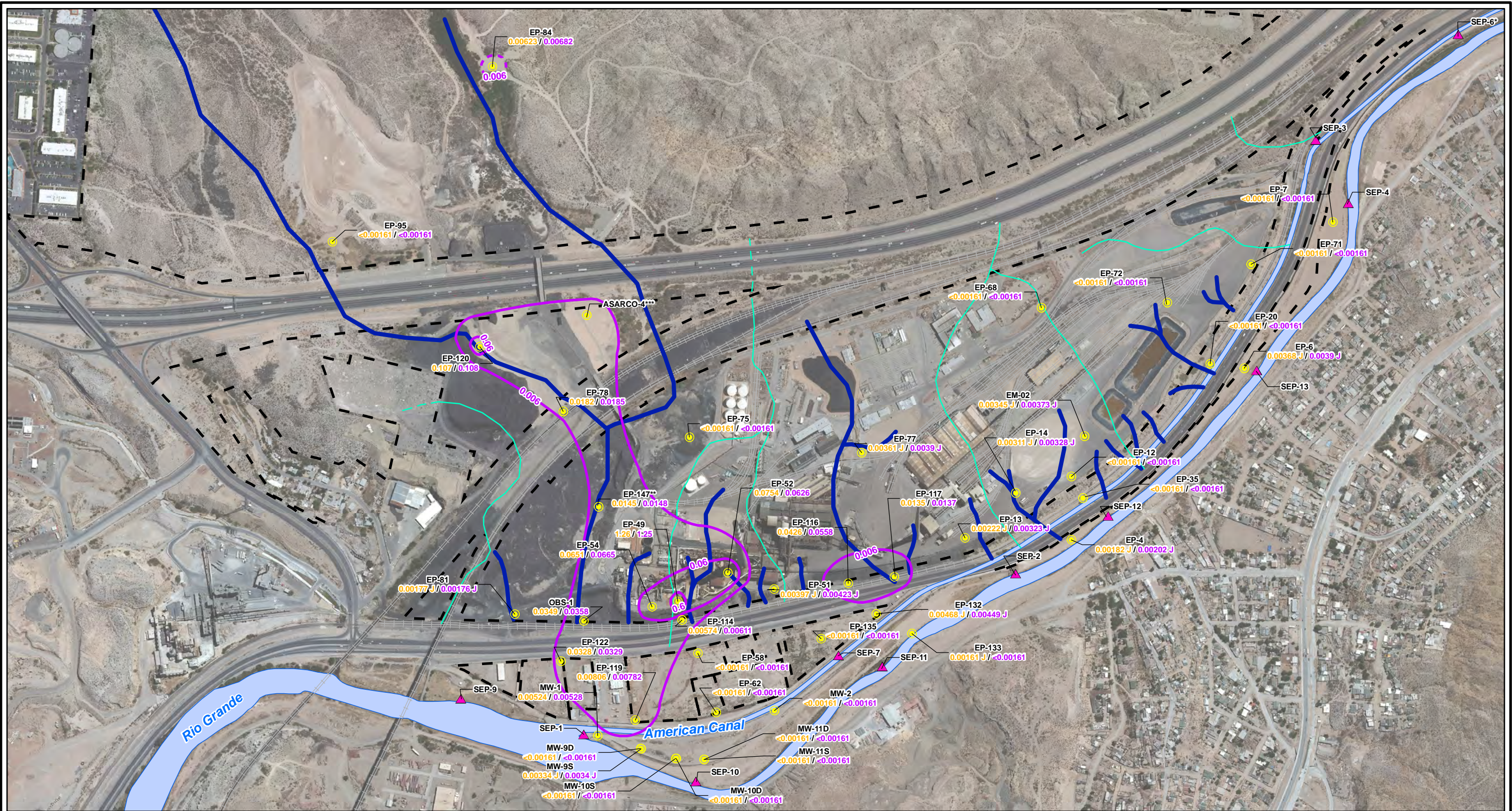


CITY: Highlands Ranch DIV/GROUP: GIS DB: BG
 Project (Project #):
 Path: I:\ASARCO - El Paso\GIS\MXD\RI_ Revised\Fig 4-62 Antimony_GW_Fall2012.mxd Date: 9/13/2013 Time: 3:43:51 PM

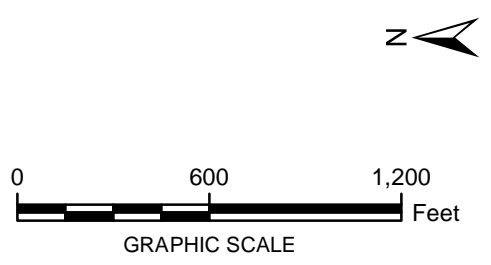


LEGEND:

- Monitoring Wells
- ▲ Surface Water Stations
- Total Antimony Contours (mg/L) (Dashed where inferred)
- Historical Arroyo Trace Lines
- - - Property Boundary
- Historical Drainage Divide

EP-81 Well ID
0.00177 J / 0.00176 J Dissolved Antimony/Total Antimony (mg/L)

Note:
 Antimony Screening Level = 0.006 mg/L (EPA Drinking Water MCL)
 EPA = Environmental Protection Agency
 J = The reported value was obtained from a reading that was less than the reporting limit but greater than or equal to the method detection limit
 MCL = Maximum Contaminant Level
 mg/L = milligrams per liter
 <math>< <math>= Non detect at the reporting limit shown
 *Actual location of SEP-6 is approximately one mile further downstream on the American Canal.
 **Data collected in October 2012
 ***TxDOT monitoring well not sampled



FORMER EL PASO SMELTER SITE
 EL PASO, TEXAS

**ANTIMONY DISTRIBUTION IN GROUNDWATER
 FALL 2012**

**MALCOLM
 PIRNIE**

**FIGURE
 4-64**