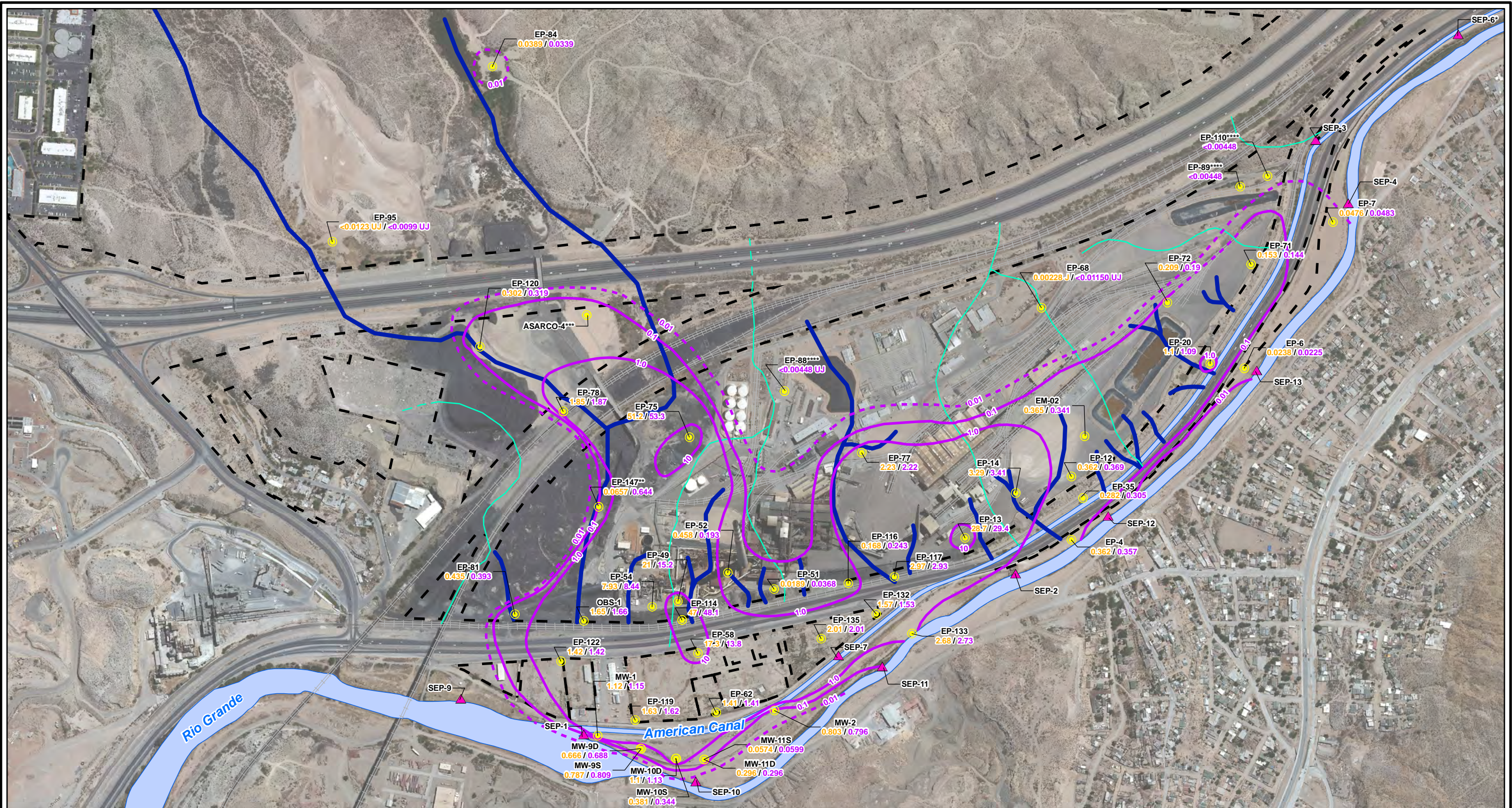


CITY: Highlands Ranch DIV/GROUP: GIS DB: BG  
 Project (Project #):  
 Path: I:\ASARCO - El Paso\GIS\MXD\RI - Revised\Fig 4-63 Arsenic GW - Fall 2012.mxd Date: 9/13/2013 Time: 3:43:57 PM



**LEGEND:**

- Total Arsenic Contours (mg/L) (Dashed where inferred)
- Historical Arroyo Trace Lines
- Historical Drainage Divide
- Monitoring Wells
- ▲ Surface Water Stations
- - - Property Boundary

**EP-75 Well ID**  
**51.2 / 53.3 Dissolved Arsenic/Total Arsenic (mg/L)**

**Note:**  
 Arsenic Screening Level = 0.01 mg/L (EPA Drinking Water MCL)  
 EPA = Environmental Protection Agency  
 J = The reported value was obtained from a reading that was less than reporting limit but greater than or equal to the method detection limit.  
 UJ = Estimated reporting limit  
 MCL = Maximum Contaminant Level  
 mg/L = milligrams per liter  
 < = Non detect at the reporting limit shown

\*Actual location of SEP-6 is approximately one mile further downstream on the American Canal.  
 \*\*Data collected October 2012  
 \*\*\*TxDOT monitoring well not sampled  
 \*\*\*\*Data collected August 2009

N

0      600      1,200  
 Feet  
 GRAPHIC SCALE

FORMER EL PASO SMELTER SITE  
 EL PASO, TEXAS

**ARSENIC DISTRIBUTION IN GROUNDWATER  
 FALL 2012**

**MALCOLM  
 PIRNIE**

**FIGURE  
 4-65**