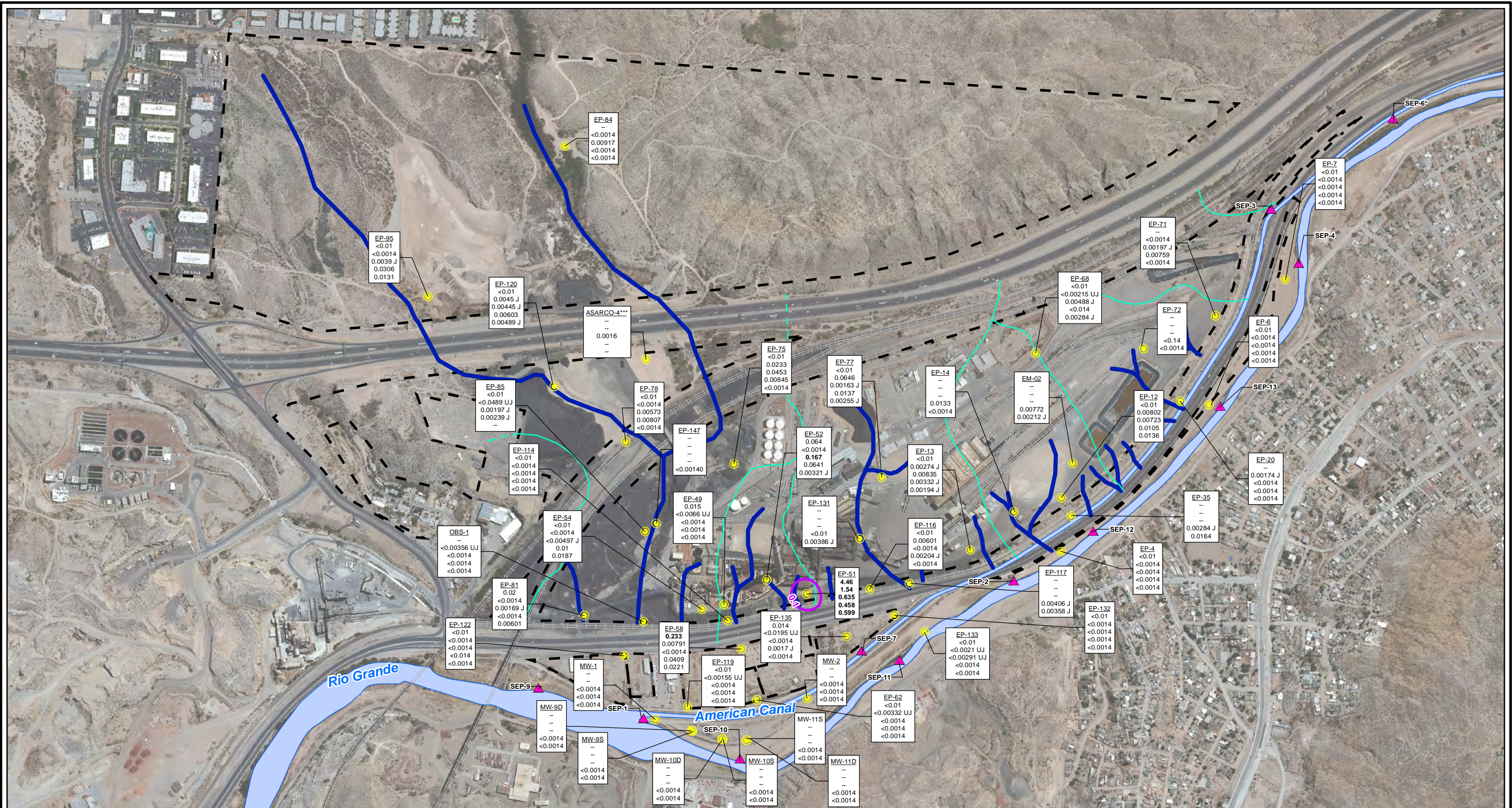


CITY: Highlands Ranch DIV/GROUP: GIS DB: BG  
 Project (Project #):  
 Path: I:\ASARCO - El Paso\GIS\MXD\RI Revised\Fig 4.65 Chromium 2010to2012.mxd Date: 9/13/2013 Time: 3:43:21 PM



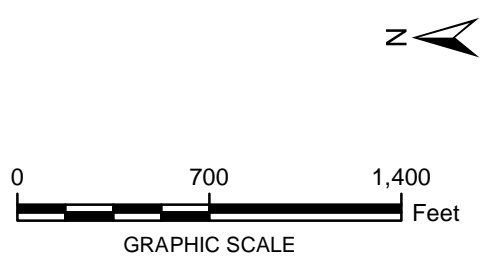
**LEGEND:**

- Monitoring Wells
- ▲ Surface Water Stations
- Historical Arroyo Trace Lines
- Property Boundary
- Historical Drainage Divide
- Total Chromium Contours (mg/L; Fall 2012)

**Note:**  
 Chromium Screening Level = 0.1 mg/L (EPA Drinking Water MCL)  
 EPA = Environmental Protection Agency  
 J = The reported value was obtained from a reading that was less than reporting limit but greater than or equal to the method detection limit.  
 UJ = Estimated reporting limit  
 MCL = Maximum Contaminant Level  
 mg/L = milligrams per liter  
 < = Non detect at the reporting limit shown  
 -- = No Result

**Bolded Value = result exceeds PCL**  
 \*Actual location of SEP-6 is approximately one mile further downstream on the American Canal.  
 \*\*\*TxDOT monitoring well sampled June 2011; dissolved concentrations used for contouring

Well ID	Fall 2010	Spring 2011	Fall 2011	Spring 2012	Fall 2012
EP-54	<0.01	<0.0014	<0.00497 J	0.01	0.0187



FORMER EL PASO SMELTER SITE  
EL PASO, TEXAS

**CHROMIUM DISTRIBUTION IN GROUNDWATER  
FALL 2010 - FALL 2012**

**FIGURE  
4-67**

**MALCOLM  
PIRNIE**