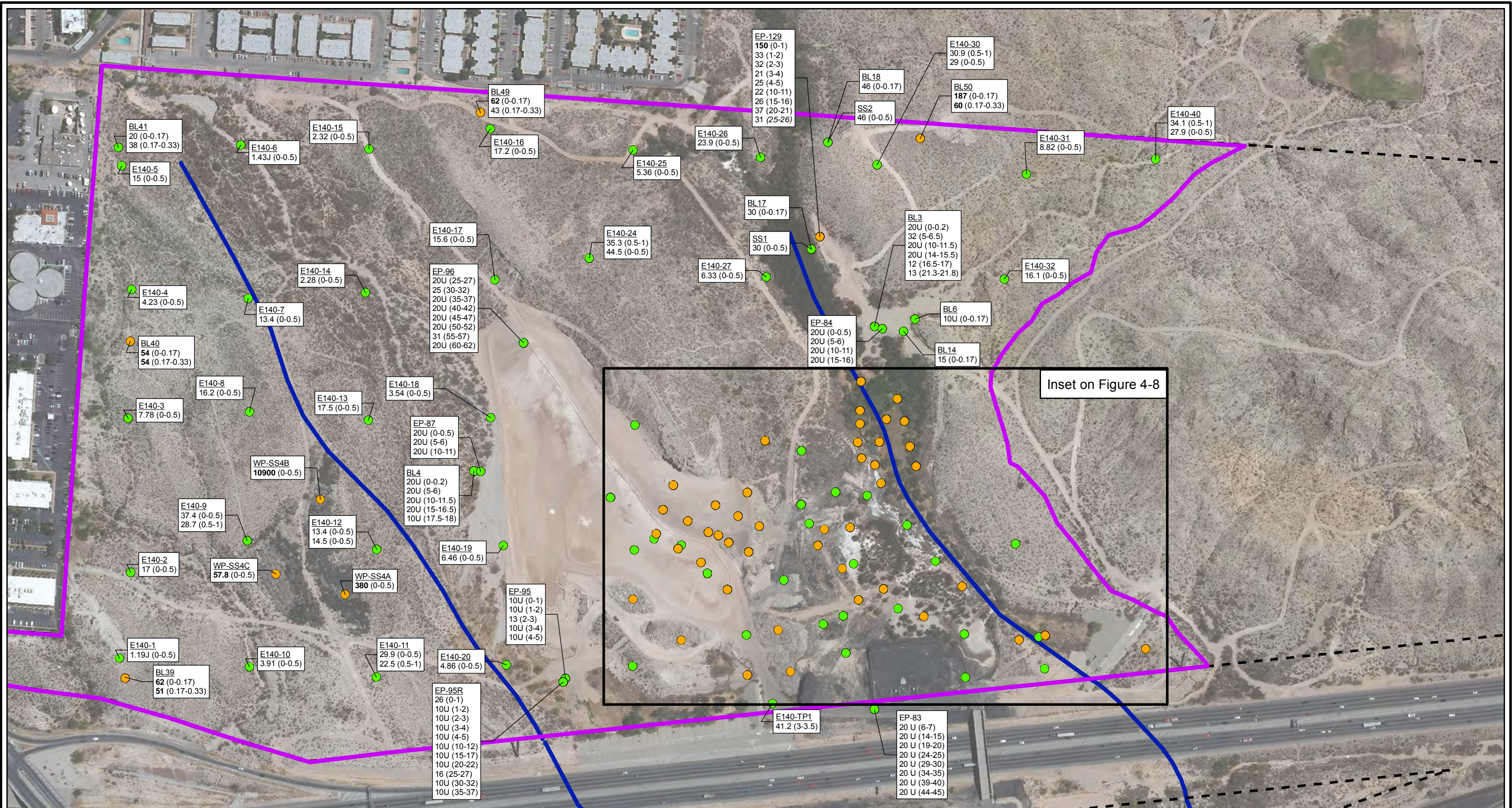
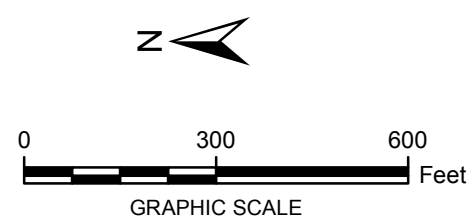
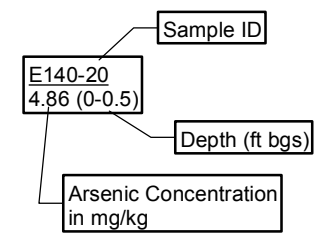


CITY: Highlands Ranch DIV/GROUP: GIS DB: BG
 Project (Project #):
 Path: G:\GIS\ASARCO_EIPaso\GIS\MXD\RI_Updated\Revisions Oct 2014\Fig 4-7 Arsenic Soil Locations_EastProp_1.mxd Date: 10/10/2014 Time: 11:22:40 AM



- LEGEND:**
- DETECTED ≤ SCREENING LEVEL
 - DETECTED > SCREENING LEVEL
 - HISTORICAL ARROYO TRACE LINES
 - - - PROPERTY BOUNDARY
 - AREA BOUNDARY

NOTE:
 Screening Level (RRR SAI-Res = 46 mg/kg)
Bolded Value exceeds screening level
Italics indicate below the water table
 J = Estimated Value
 U = Not detected at or above reporting limit
 Date of Aerial Photo: 2009



FORMER EL PASO SMELTER SITE
EL PASO, TEXAS

**ARSENIC DISTRIBUTION IN SOIL
EAST PROPERTY**

**MALCOLM
PIRNIE**

**FIGURE
4-7**