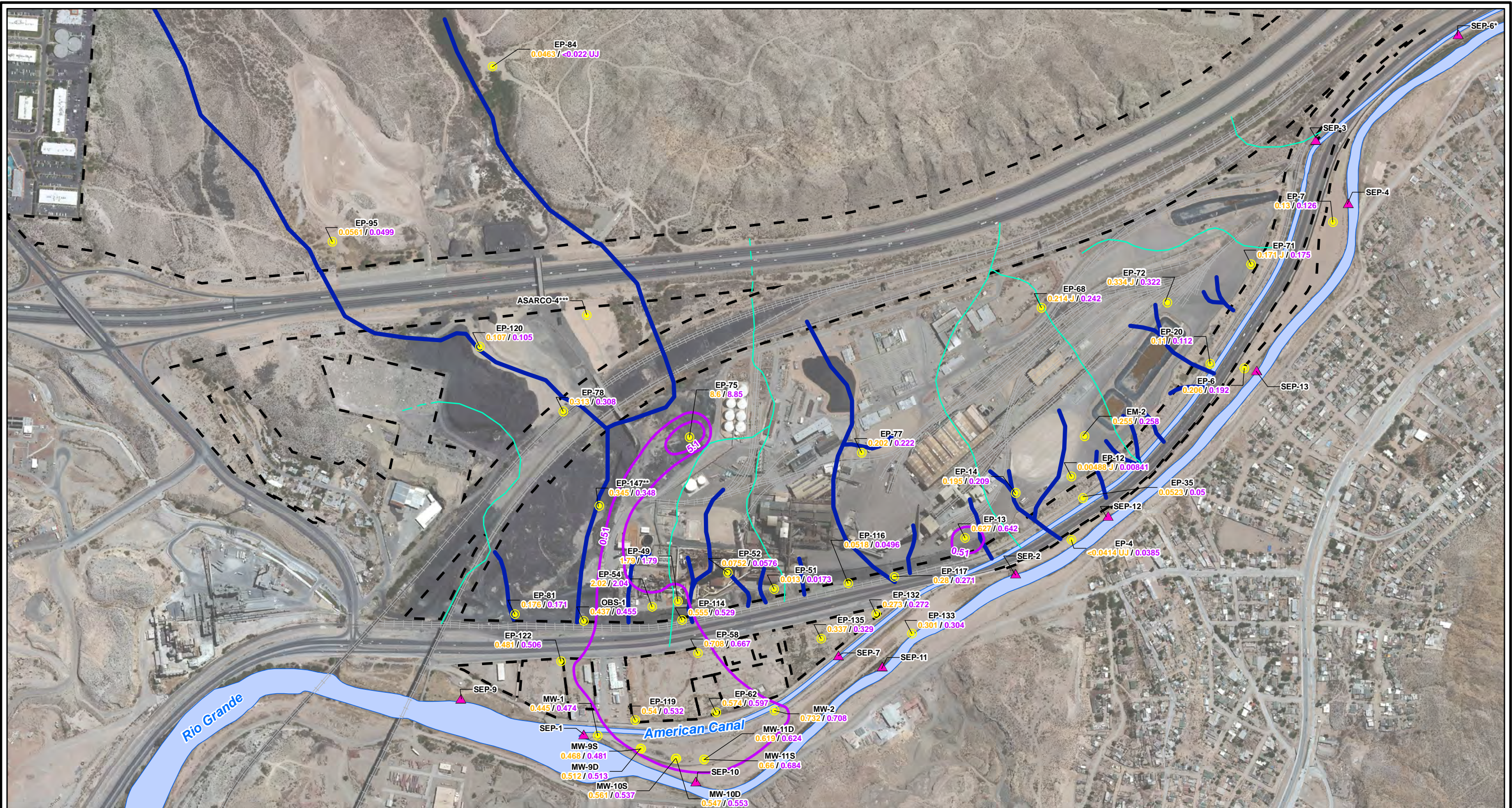


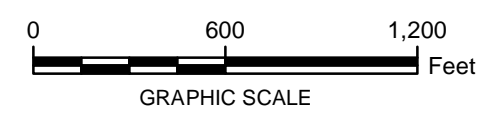
CITY: Highlands Ranch DIV/GROUP: GIS DB: BG  
 Project (Project #):  
 Path: I:\ASARCO - El Paso\GIS\MXD\RI\_ Revised\Fig 4-70 Molybdenum\_GW\_Fall2012.mxd Date: 9/13/2013 Time: 3:55:21 PM



- LEGEND:**
- Monitoring Wells
  - ▲ Surface Water Stations
  - Total Molybdenum Contours (mg/L)  
(Dashed where inferred)
  - Historical Arroyo Trace Lines
  - - - Property Boundary
  - Historical Drainage Divide

**EP-81** Well ID  
● **0.176 / 0.171** Dissolved Molybdenum/Total Molybdenum (mg/L)

**Note:**  
 Molybdenum Screening Level = 0.51 mg/L (RRR Groundwater Industrial)  
 J = The reported value was obtained from a reading that was less than reporting limit but greater than or equal to the method detection limit.  
 UJ = Estimated Reporting Limit  
 mg/L = milligrams per liter  
 RRR = Texas Risk Reduction Rules  
 < = Non detect at the reporting limit shown  
 \*Actual location of SEP-6 is approximately one mile further downstream on the American Canal.  
 \*\*Data collected in October 2012  
 \*\*\*TxDOT monitoring well not sampled



FORMER EL PASO SMELTER SITE  
 EL PASO, TEXAS

**MOLYBDENUM DISTRIBUTION IN GROUNDWATER  
 FALL 2012**

**MALCOLM  
 PIRNIE**

**FIGURE  
 4-72**