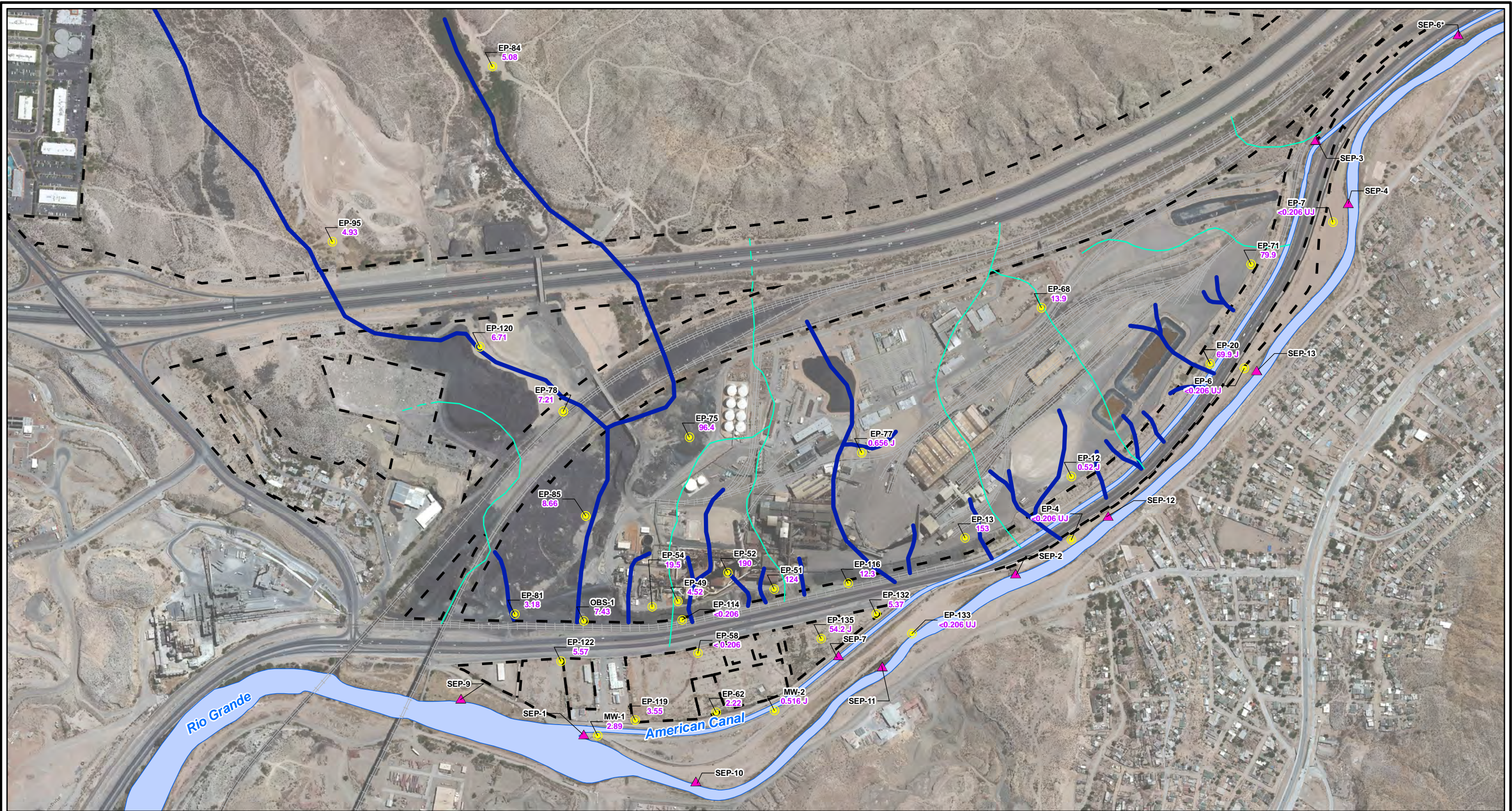


CITY: Highlands Ranch DIV/GROUP: GIS DB: BG
 Project (Project #):
 Path: \NASARCO - ElPaso\GIS\MXD\RI - Revises\Fig 4-73 Nitrate_GW_Fall2011.mxd Date: 9/19/2013 Time: 3:59:00 PM



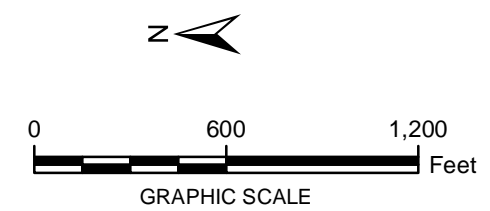
LEGEND:

- Monitoring Wells
- ▲ Surface Water Stations

- Total Nitrate Contours (mg/L)
(Dashed where Inferred)
- Historical Arroyo Trace Lines
- - - Property Boundary
- Historical Drainage Divide

EP-81 Well ID
3.18 Total Nitrate (mg/L)

Note:
 Nitrate Screening Level = 10 mg/L (EPA Secondary Drinking Water MCL)
 EPA = Environmental Protection Agency
 J = The reported value was obtained from a reading that was less than reporting limit but greater than or equal to the method detection limit.
 UJ = Estimated reporting limit
 MCL = Maximum Contaminant Level
 mg/L = milligrams per liter
 < = Non detect at the reporting limit shown
 *Actual location of SEP-6 is approximately one mile further downstream on the American Canal.



FORMER EL PASO SMELTER SITE
 EL PASO, TEXAS

**NITRATE DISTRIBUTION IN GROUNDWATER
 FALL 2011**

**MALCOLM
 PIRNIE**

**FIGURE
 4-75**