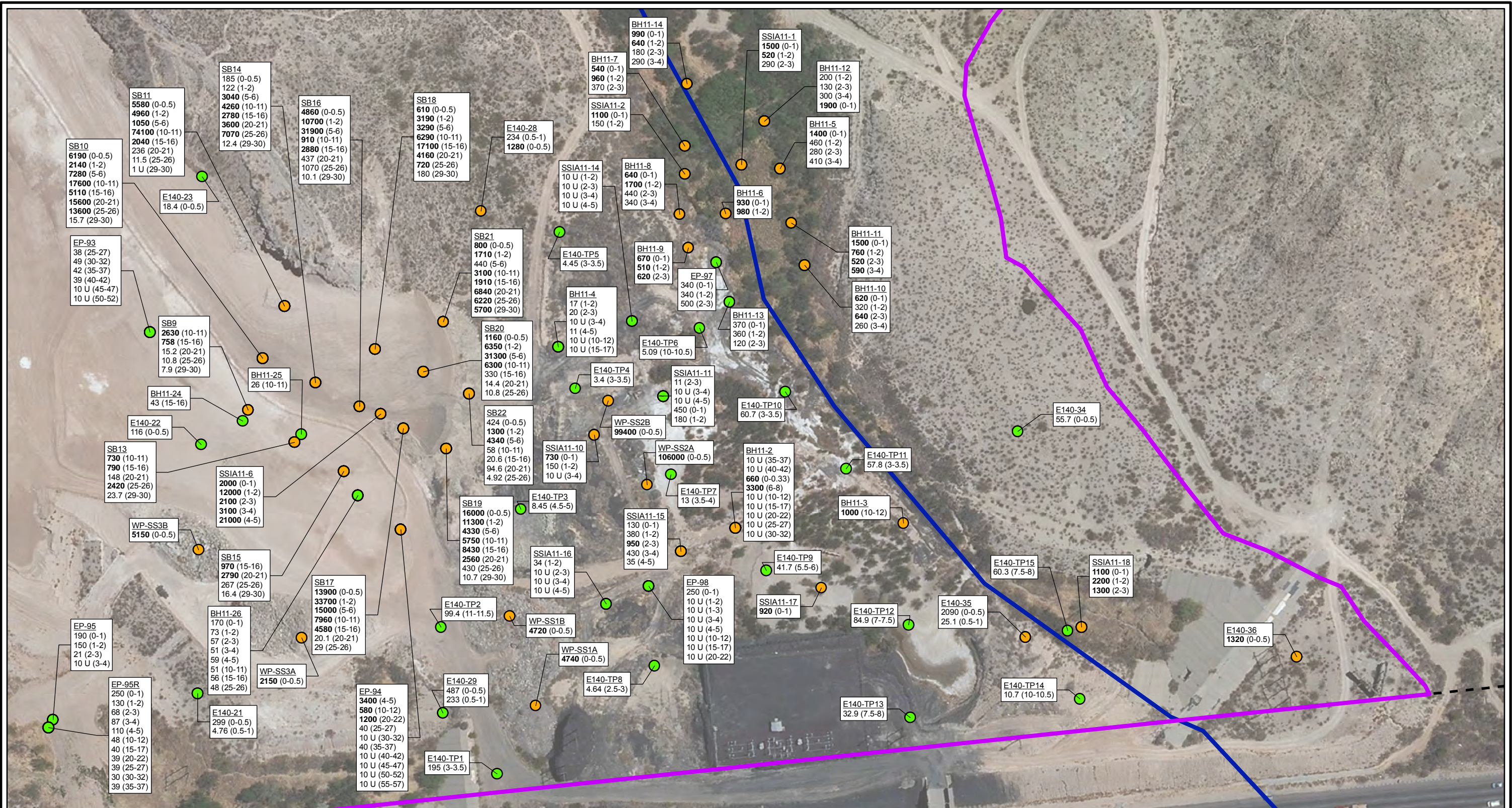
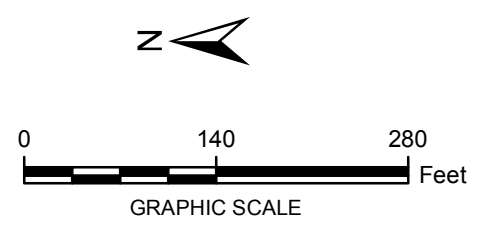
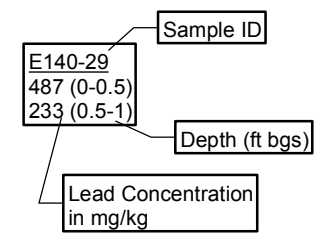


CITY: Highlands Ranch DIV/GROUP: GIS DB: BG  
 Project (Project #):  
 Path: I:\ASARCO - El Paso\GIS\MXD\RI\_ Revised\Fig 4-14 Lead\_Soil\_locations\_EastProp\_2.mxd Date: 9/13/2013 Time: 3:15:13 PM



- LEGEND:**
- DETECTED ≤ SCREENING LEVEL
  - DETECTED > SCREENING LEVEL
  - HISTORIC ARROYO TRACE LINES
  - - - PROPERTY BOUNDARY
  - AREA BOUNDARY

**NOTE:**  
 Screening Level (RRR SAI-Res = 500 mg/kg)  
**Bolded** Value exceeds screening level  
*Italics* Depth below groundwater  
 J = Estimated Value  
 U = Not detected at or above reporting limit  
 Date of Aerial Photo: 2009



FORMER EL PASO SMELTER SITE  
EL PASO, TEXAS

**LEAD DISTRIBUTION IN SOIL  
EAST PROPERTY**

**MALCOLM  
PIRNIE**

**FIGURE  
4-14**