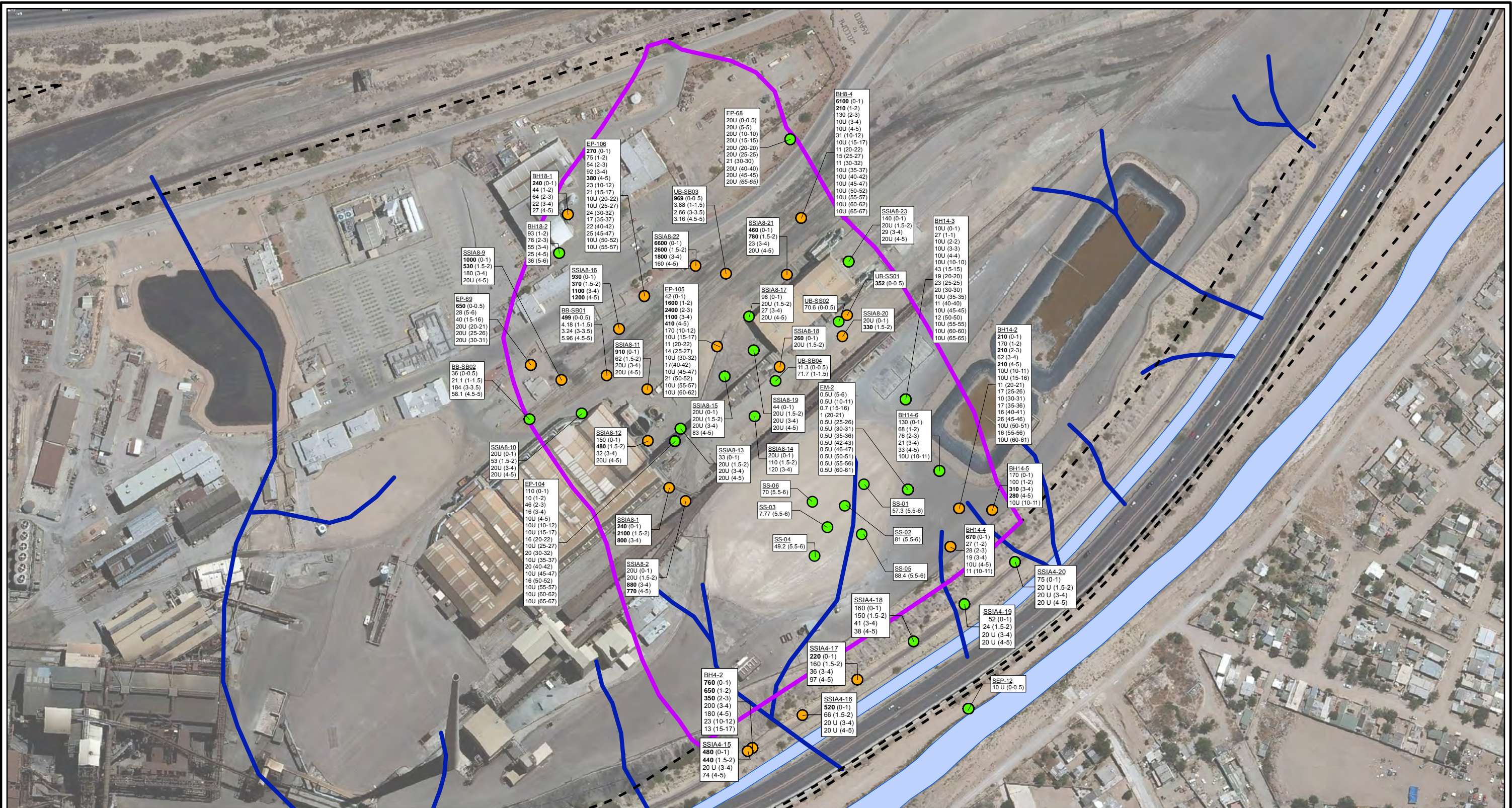


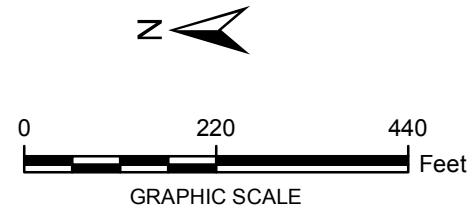
CITY: Highlands Ranch DIV/GROUP: GIS DB: BG  
 Project (Project #):  
 Path: I:\ASARCO - El Paso\GIS\MD\RI - Revised\Fig 4-35 Arsenic Soil Locations Pond1.mxd Date: 9/13/2013 Time: 3:28:28 PM



- LEGEND:**
- DETECTED ≤ SCREENING LEVEL
  - DETECTED > SCREENING LEVEL
  - HISTORICAL ARROYO TRACE LINES
  - PROPERTY BOUNDARY
  - AREA BOUNDARY

**NOTE:**  
 Screening Level (RRR SAI-Ind = 200 mg/kg)  
**Bolded** Value exceeds screening level  
*Italics* indicate below the water table  
 J = Estimated Value  
 U = Not detected at or above reporting limit  
 Date of Aerial Photo: 2009

|                                |                              |
|--------------------------------|------------------------------|
| Sample ID                      | UB-SB04                      |
| Arsenic Concentration in mg/kg | 11.3 (0-0.5)<br>71.7 (1-1.5) |
| Depth (ft bgs)                 |                              |



|   |                        |
|---|------------------------|
| FORMER EL PASO SMELTER SITE<br>EL PASO, TEXAS         |                        |
| <b>ARSENIC DISTRIBUTION IN SOIL<br/>POND 1 ARROYO</b> |                        |
|   | <b>FIGURE<br/>4-35</b> |