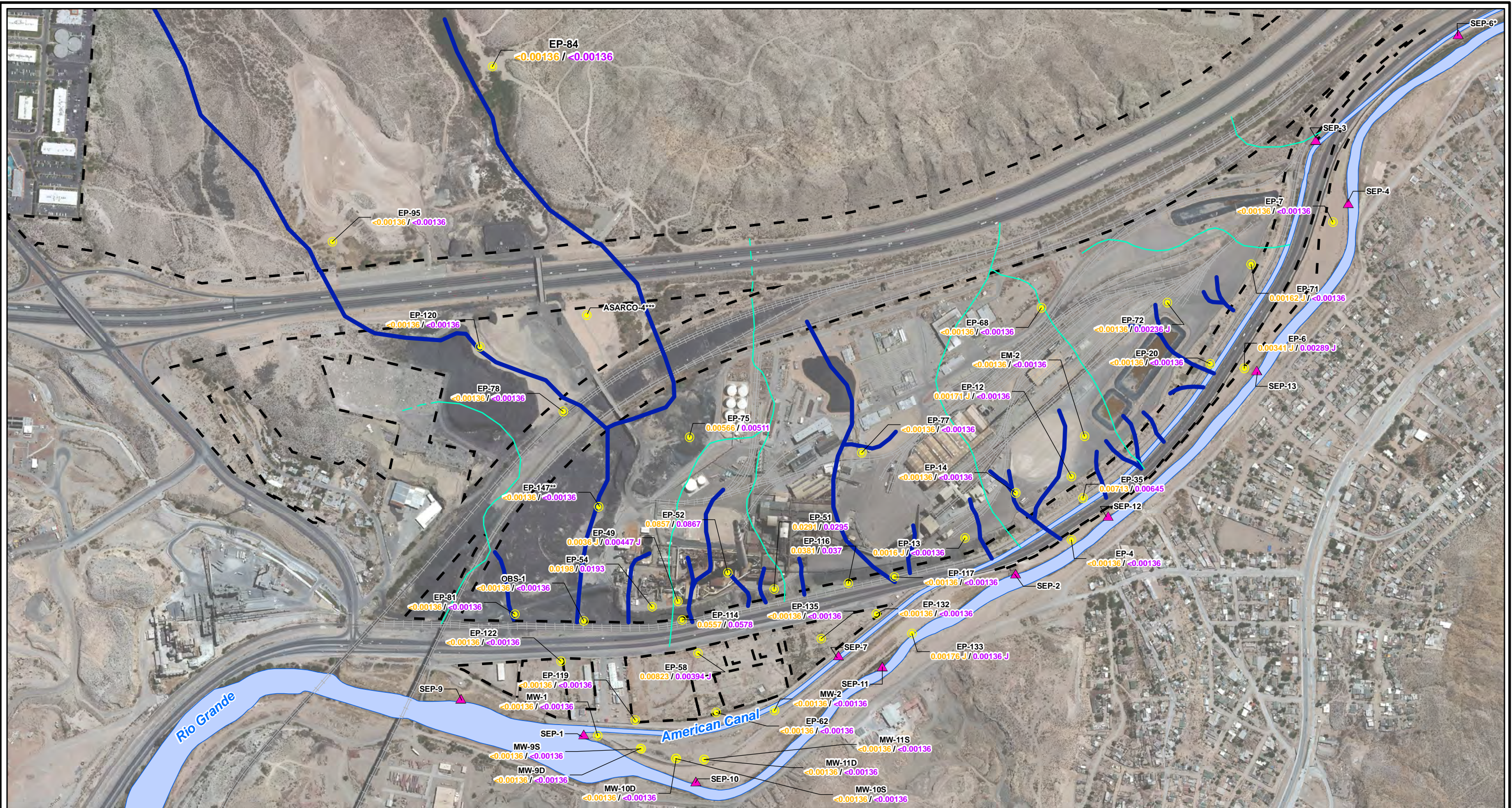


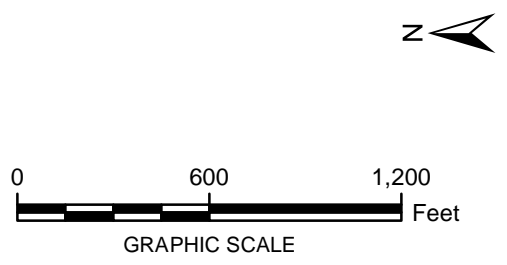
CITY: Highlands Ranch DIV/GROUP: GIS DB: BG  
 Project: (sect 4)  
 Path: I:\ASARCO - ElPaso\GIS\MXD\RI - Revised\Fig 4-66 Cobalt\_GW\_Fall2012.mxd Date: 9/13/2013 Time: 3:44:06 PM



- LEGEND:**
- Monitoring Wells
  - ▲ Surface Water Stations
  - Historical Arroyo Trace Lines
  - - - Property Boundary
  - Historical Drainage Divide

**EP-81** Well ID  
<0.00136 / <0.00136 Dissolved Cobalt/Total Cobalt (mg/L)

Note:  
 Cobalt Screening Level = 6.1 mg/L (RRR Groundwater Industrial)  
 J = The reported value was obtained from a reading that was less than reporting limit but greater than or equal to the method detection limit.  
 < = Non detect at the reporting limit shown  
 mg/L = milligrams per liter  
 RRR = Risk Reduction Rules  
 \*Actual location of SEP-6 is approximately one mile further downstream on the American Canal.  
 \*\*Data collected in October 2012  
 \*\*\*TxDOT monitoring well not sampled



FORMER EL PASO SMELTER SITE  
 EL PASO, TEXAS

**COBALT DISTRIBUTION IN GROUNDWATER  
 FALL 2012**

**MALCOLM  
 PIRNIE**

**FIGURE  
 4-66**