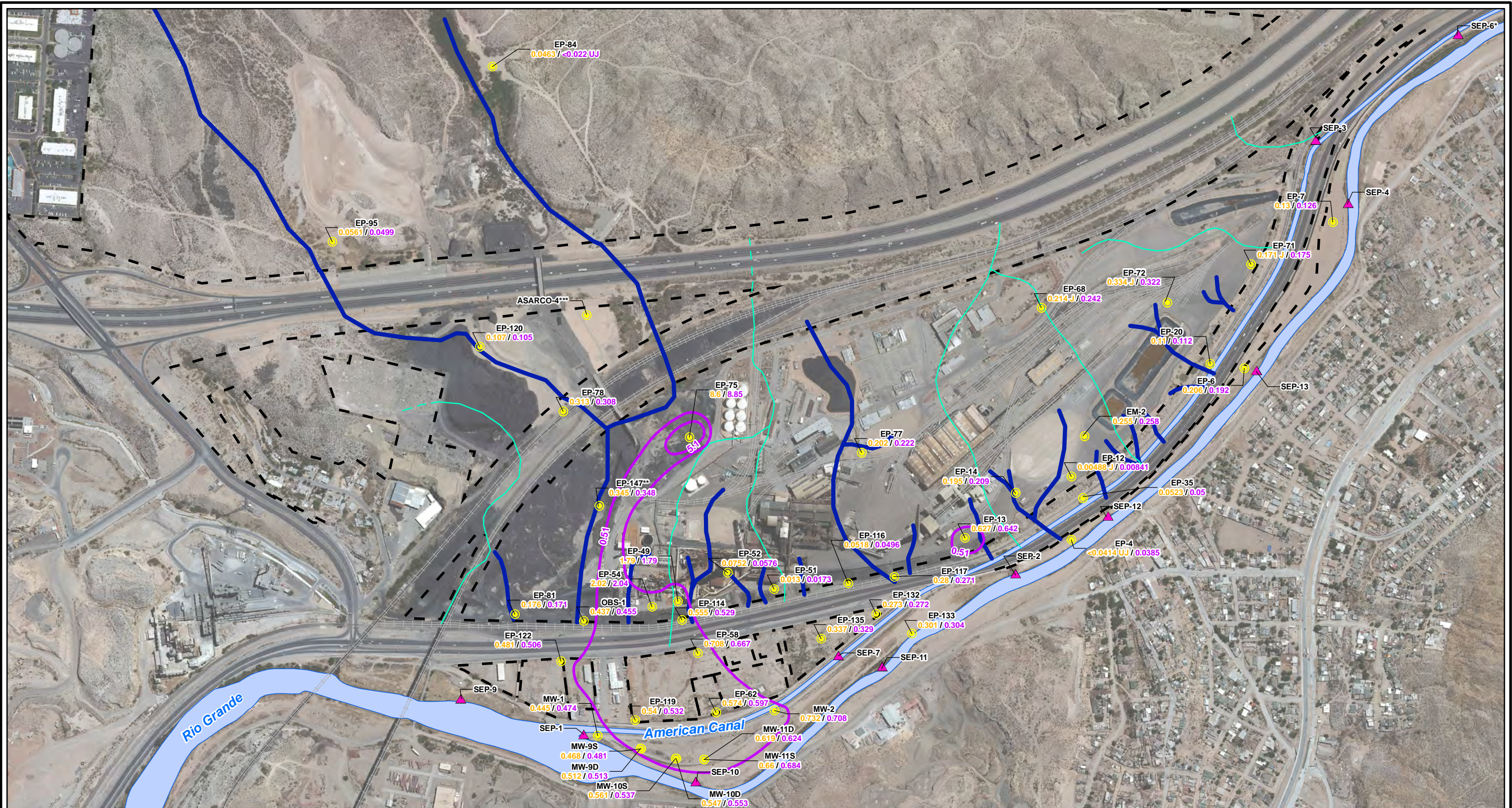


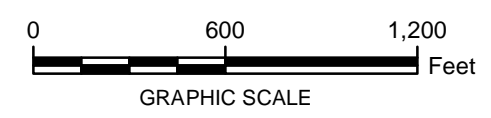
CITY: Highlands Ranch DIV/GROUP: GIS DB: BG
 Project (Project #):
 Path: I:\ASARCO - El Paso\GIS\MXD\RIJ_ Revised\Fig 4-70 Molybdenum_GW_Fall2012.mxd Date: 9/13/2013 Time: 3:55:21 PM



- LEGEND:**
- Monitoring Wells
 - ▲ Surface Water Stations
 - Total Molybdenum Contours (mg/L)
(Dashed where inferred)
 - Historical Arroyo Trace Lines
 - - - Property Boundary
 - Historical Drainage Divide

EP-81 Well ID
● **0.176 / 0.171** Dissolved Molybdenum/Total Molybdenum (mg/L)

Note:
 Molybdenum Screening Level = 0.51 mg/L (RRR Groundwater Industrial)
 J = The reported value was obtained from a reading that was less than reporting limit but greater than or equal to the method detection limit.
 UJ = Estimated Reporting Limit
 mg/L = milligrams per liter
 RRR = Texas Risk Reduction Rules
 < = Non detect at the reporting limit shown
 *Actual location of SEP-6 is approximately one mile further downstream on the American Canal.
 **Data collected in October 2012
 ***TxDOT monitoring well not sampled



FORMER EL PASO SMELTER SITE
 EL PASO, TEXAS

**MOLYBDENUM DISTRIBUTION IN GROUNDWATER
 FALL 2012**

**FIGURE
 4-70**

**MALCOLM
 PIRNIE**