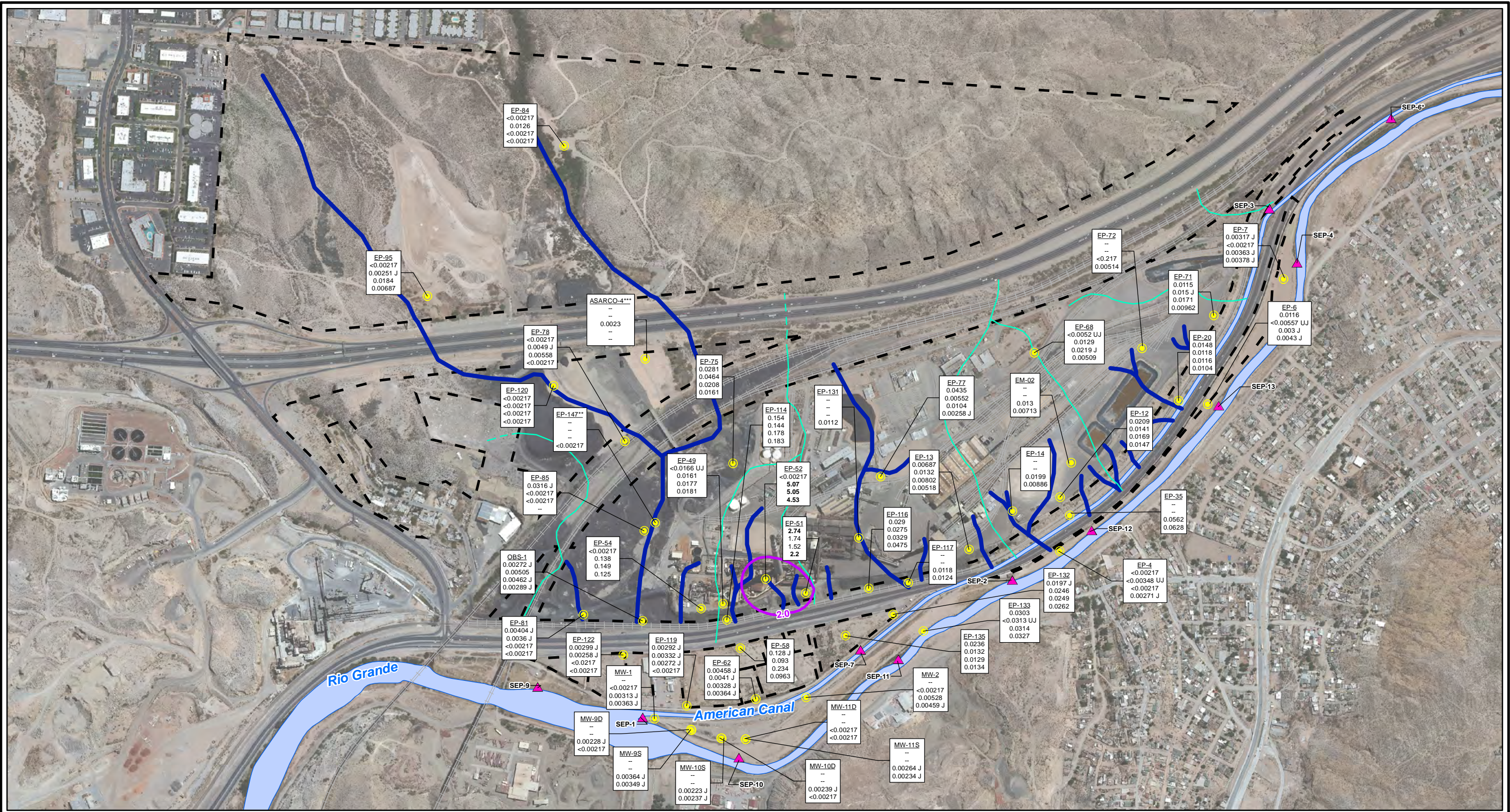


CITY: Highlands Ranch DIV/GROUP: GIS DB: BG
 Project (Project #):
 Path: I:\ASARCO - El Paso\GIS\MXD\RIJ - Revised\Fig 4-72 Nickel_2011to2012.mxd Date: 9/13/2013 Time: 3:54:00 PM

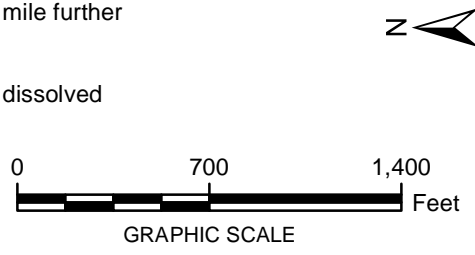


- LEGEND:**
- Monitoring Wells
 - ▲ Surface Water Stations
 - Historical Arroyo Trace Lines
 - Property Boundary
 - Historical Drainage Divide
 - Total Nickel Contours (mg/L; Fall 2012)

Note:
 Nickel Screening Level = 2.0 mg/L(RRR Groundwater Industrial)
 J = The reported value was obtained from a reading that was less than reporting limit but greater than or equal to the method detection limit.
 UJ = Estimated reporting limit
 mg/L = milligrams per liter
 RRR = Risk Reduction Rules
 < = Non detect at the reporting limit shown
 -- = No Result

Bolded Value = result exceeds PCL
 *Actual location of SEP-6 is approximately one mile further downstream on the American Canal.
 **Data collected October 2012
 ***TxDOT monitoring well sampled June 2011; dissolved concentrations used for contouring

EP-54	Well ID
<0.00217	Spring 2011
0.138	Fall 2011
0.149	Spring 2012
0.125	Fall 2012



FORMER EL PASO SMELTER SITE
EL PASO, TEXAS

**NICKEL DISTRIBUTION IN GROUNDWATER
SPRING 2011 - FALL 2012**

**MALCOLM
PIRNIE**

**FIGURE
4-72**