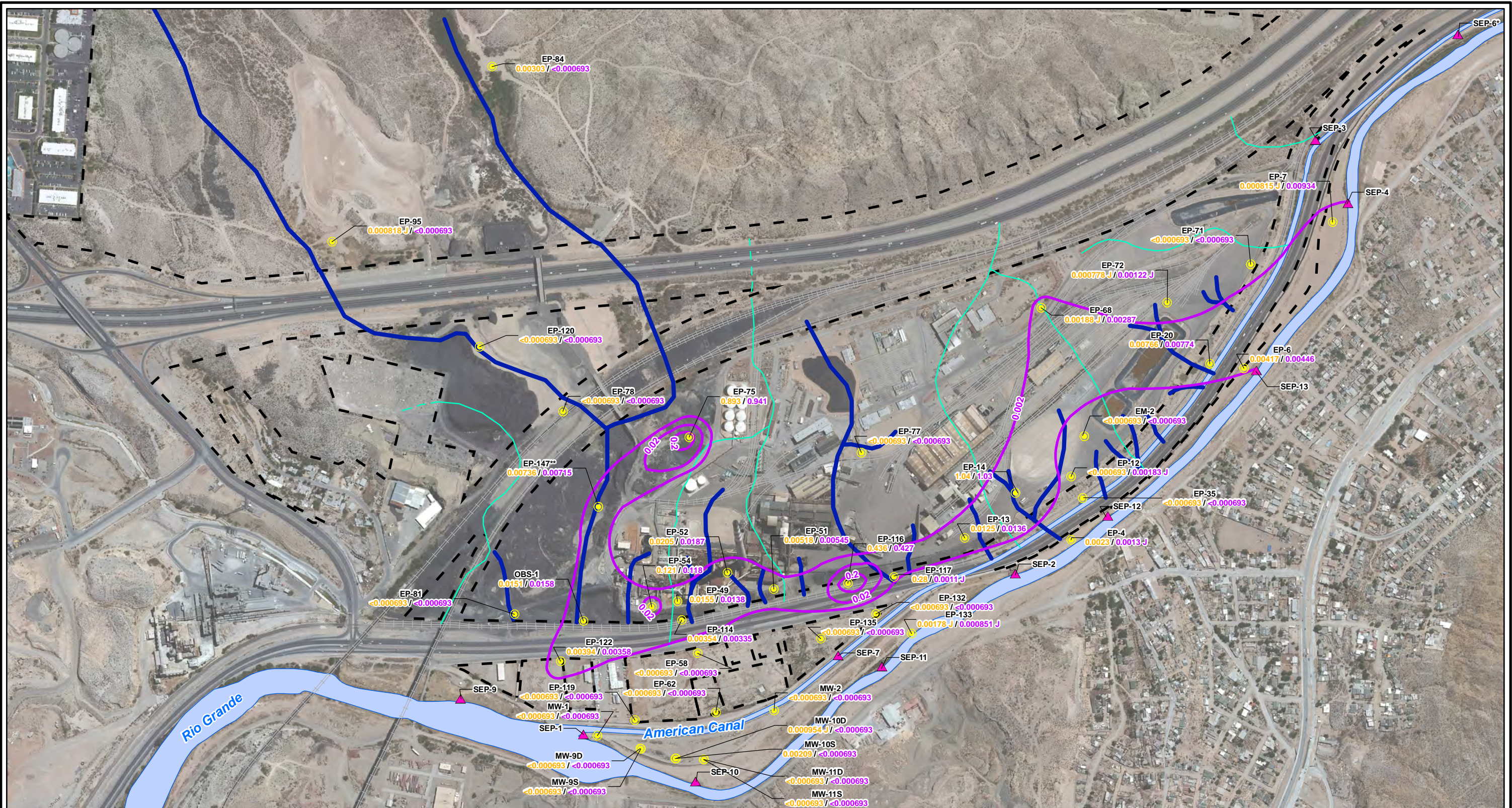


CITY: Highlands Ranch DIV/GROUP: GIS DB: BG
 Project (Project #):
 Path: I:\SARCO - ElPaso\GIS\MXD\RI - Revised\Fig 4-75 Thallium_GW_Fall2012.mxd Date: 9/13/2013 Time: 3:59:00 PM

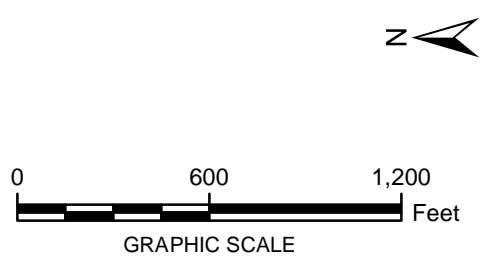


LEGEND:

- Total Thallium Contours (mg/L)
(Dashed where inferred)
- Historical Arroyo Trace Lines
- Historical Drainage Divide
- Monitoring Wells
- ▲ Surface Water Stations
- Property Boundary

EP-81 Well ID
<math><0.000693</math> / <math><0.000693</math> Dissolved Thallium/Total Thallium (mg/L)

Note:
 Thallium Screening Level = 0.002 mg/L (EPA Drinking Water MCL)
 EPA = Environmental Protection Agency
 J = The reported value was obtained from a reading that was less than reporting limit but greater than or equal to the method detection limit.
 MCL = Maximum Contaminant Level
 mg/L = milligrams per liter
 <math><= <0.000693</math> = Non detect at the reporting limit shown
 *Actual location of SEP-6 is approximately one mile further downstream on the American Canal.
 **Data collected October 2012



FORMER EL PASO SMELTER SITE
 EL PASO, TEXAS

**THALLIUM DISTRIBUTION IN GROUNDWATER
 FALL 2012**

**FIGURE
 4-75**

**MALCOLM
 PIRNIE**