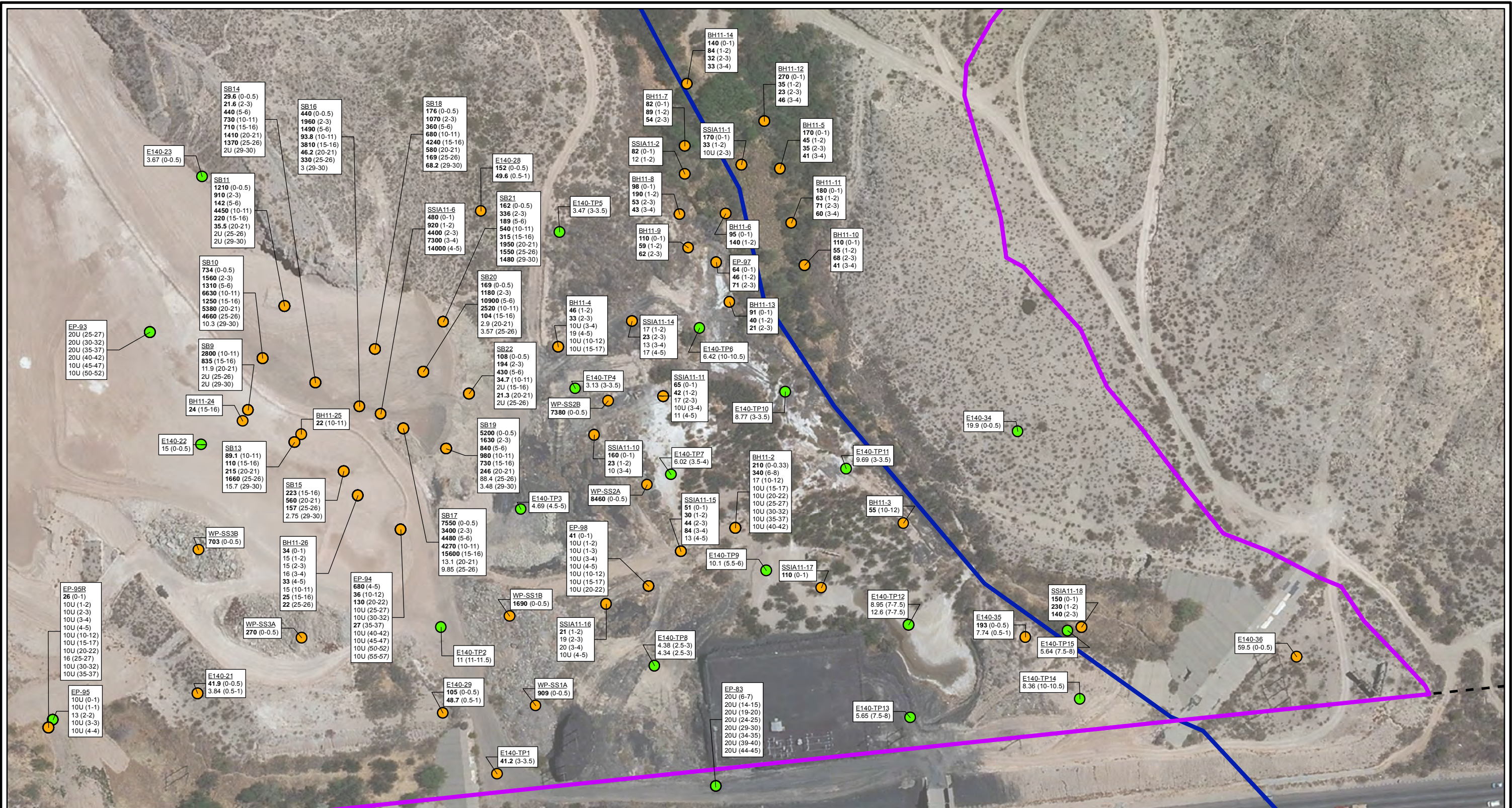


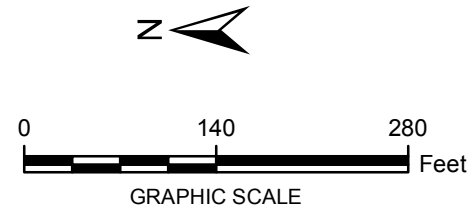
CITY: Highlands Ranch DIV/GROUP: GIS DB: BG
 Project (Project #):
 Path: I:\ASARCO - El Paso\GIS\MXDR\I_ Revised\Fig 4-8 Arsenic_Soil_Locations_EastProp_2.mxd Date: 9/13/2013 Time: 3:13:12 PM



- LEGEND:**
- DETECTED ≤ SCREENING LEVEL
 - DETECTED > SCREENING LEVEL
 - HISTORICAL ARROYO TRACE LINES
 - - - PROPERTY BOUNDARY
 - AREA BOUNDARY

NOTE:
 Screening Level (RRR SAI-Res = 20 mg/kg)
Bolded Value exceeds screening level
Italics indicate below the water table
 J = Estimated Value
 U = Not detected at or above reporting limit
 Date of Aerial Photo: 2009

Sample ID
E140-29
105 (0-0.5)
48.7 (0.5-1)
 Depth (ft bgs)
 Arsenic Concentration in mg/kg



FORMER EL PASO SMELTER SITE
 EL PASO, TEXAS

**ARSENIC DISTRIBUTION IN SOIL
 EAST PROPERTY**

**MALCOLM
 PIRNIE**

**FIGURE
 4-8**