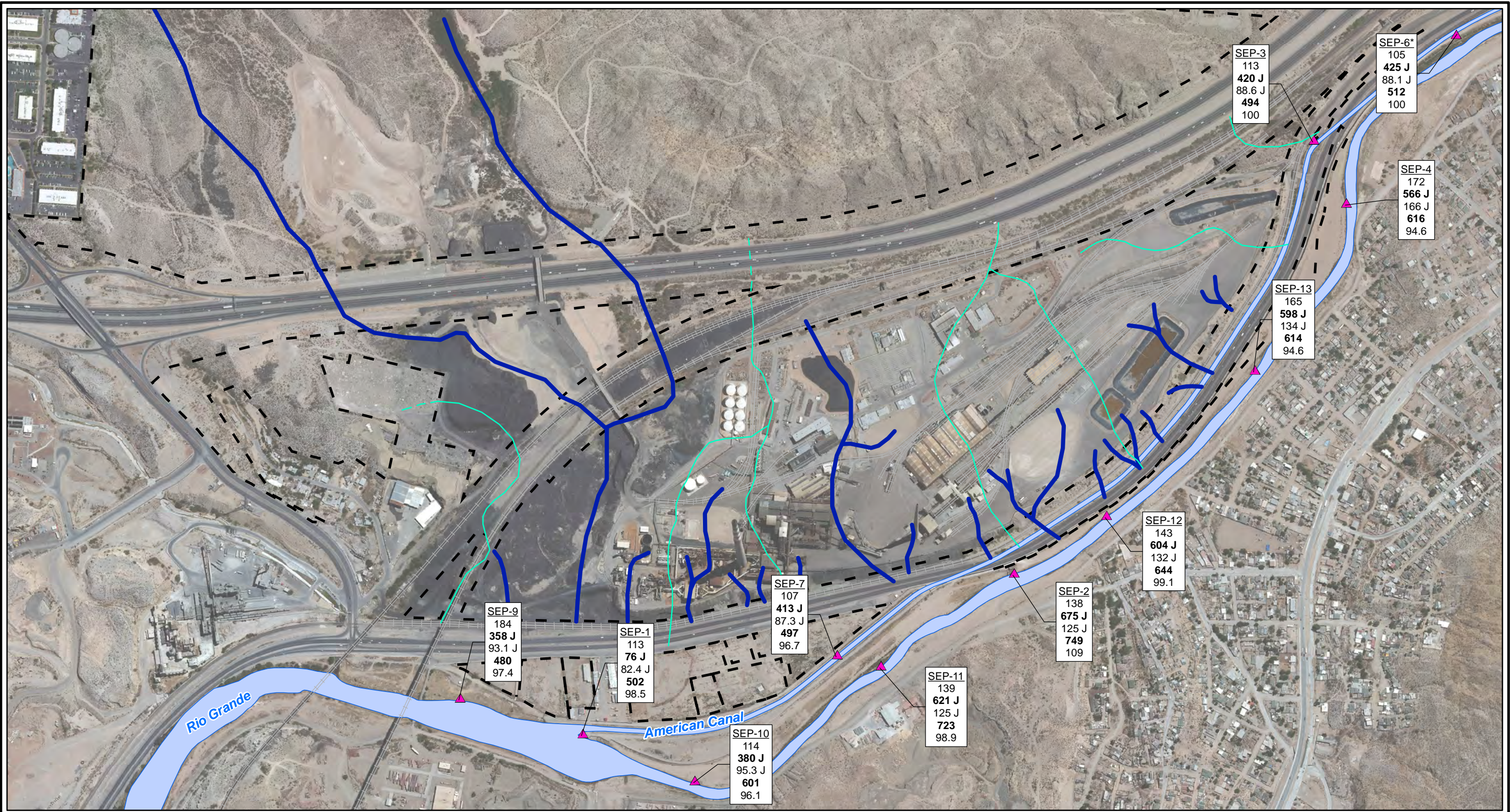


CITY: Highlands Ranch DIV/GROUP: GIS DB: BG
 Project (Project #):
 Path: \\NASARCO_ElPaso\GIS\MXD\RI_Revision\Fig 4-80_Chloride_SW_2010to2012.mxd Date: 9/13/2013 Time: 4:04:12 PM

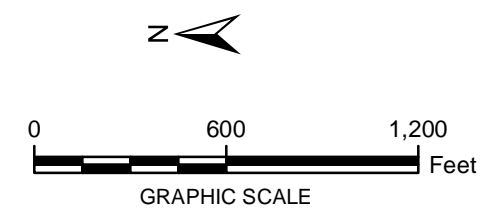


LEGEND:

- ▲ Surface Water Stations
- Historical Arroyo Trace Lines
- - - Property Boundary
- Historical Drainage Divide

Note:
 Screening Levels - American Canal: Not established,
 applied Rio Grande Screening Level. Rio Grande: 230 mg/L
 mg/L = milligrams per liter
 J = The reported value was obtained from a reading that
 was less than reporting limit but greater than or equal to the
 method detection limit.
Bolded value = result exceeds Screening Level
 *Actual location of SEP-6 is approximately one mile further
 downstream on the American Canal.

SEP-ID	Well ID	Sampling Date	Chloride (mg/L)
SEP-7	107	Fall 2010	107
	413 J	Spring 2011	413 J
	87.3 J	Fall 2011	87.3 J
	497	Spring 2012	497
	96.7	Fall 2012	96.7



FORMER EL PASO SMELTER SITE
EL PASO, TEXAS

**CHLORIDE DISTRIBUTION IN SURFACE WATER
FALL 2010 TO FALL 2012**

**MALCOLM
PIRNIE**

**FIGURE
4-80**