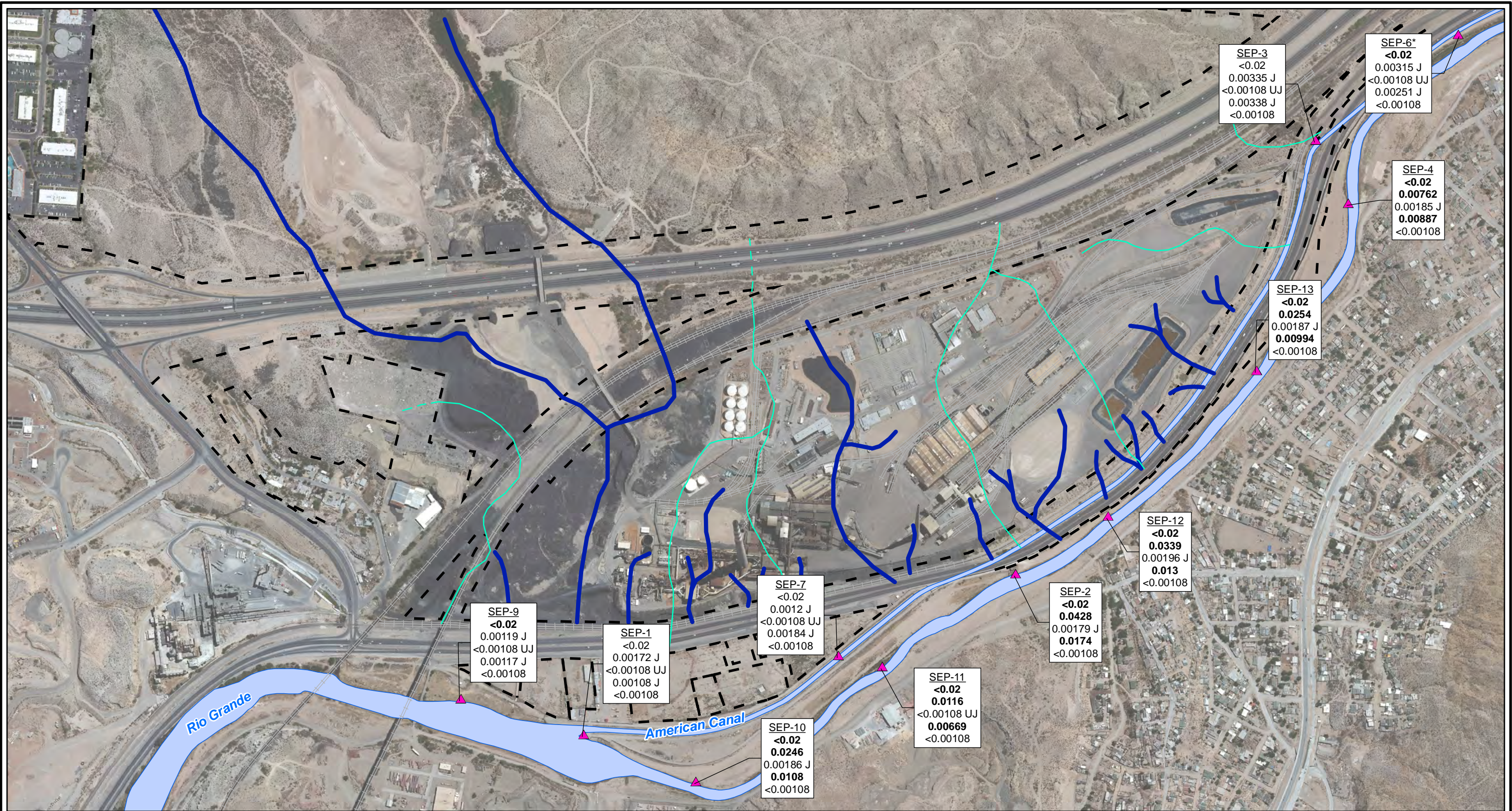


CITY: Highlands Ranch DIV/GROUP: GIS DB: BG  
 Project (Project #):  
 Path: \NASARCO - ElPaso\GIS\MXD\RI - Revises\Fig 4-84 Selenium\_SW\_2010to2012.mxd Date: 9/13/2013 Time: 4:04:11 PM

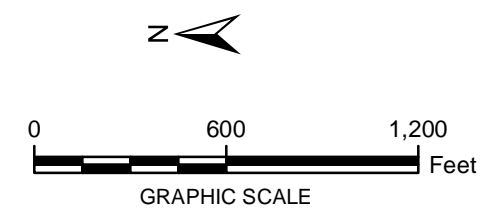


**LEGEND:**

- ▲ Surface Water Stations
- Historical Arroyo Trace Lines
- - - Property Boundary
- Historical Drainage Divide

Note:  
 Screening Levels - American Canal: 0.05 mg/L Rio Grande: 0.005 mg/L  
 mg/L = milligrams per liter  
 J = The reported value was obtained from a reading that was less than reporting limit but greater than or equal to the method detection limit.  
**Bolded** value = result exceeds Screening Level  
 < = Non detect at the reporting limit shown  
 \*Actual location of SEP-6 is approximately one mile further downstream on the American Canal.

Well ID	Well ID
SEP-7	Fall 2010
<0.02	Spring 2011
0.0012 J	Fall 2011
<0.00108 UJ	Spring 2012
0.00184 J	Fall 2012
<0.00108	



FORMER EL PASO SMELTER SITE  
EL PASO, TEXAS

**SELENIUM DISTRIBUTION IN SURFACE WATER  
FALL 2010 TO FALL 2012**

**MALCOLM  
PIRNIE**

**FIGURE  
4-84**