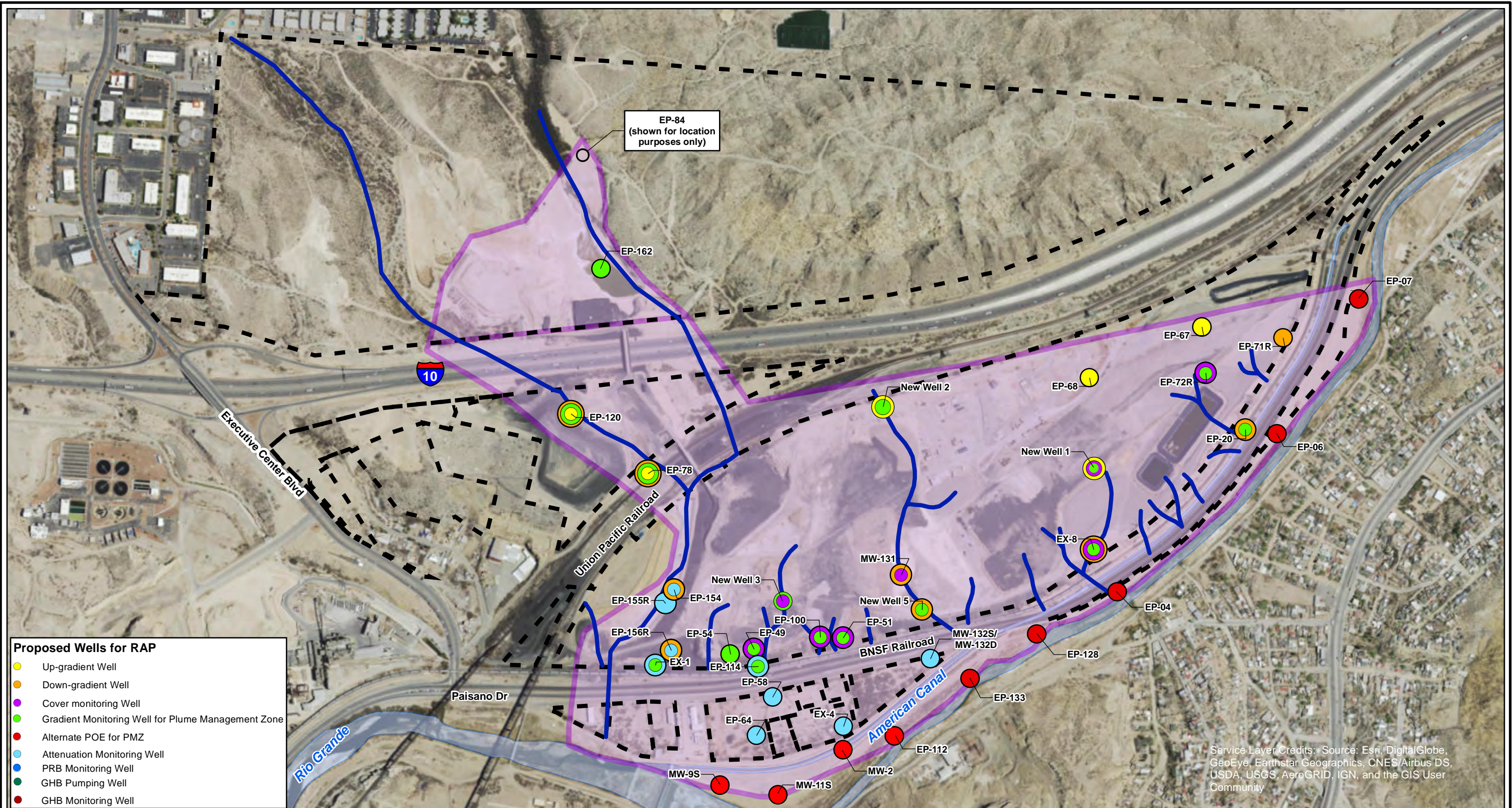


ATTACHMENT 2A

MAP OF PLUME MANAGEMENT ZONE



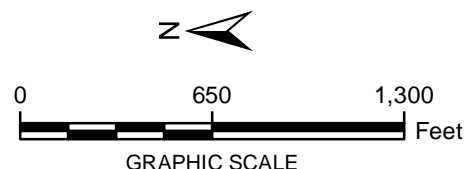
CITY: Highlands Ranch, DIV/GROUP: GIS DB: BG
 Path: Z:\GIS\Projects\ENVASARCO_EIPaso\GIS\SMXD\RACR_Soil\Fig_2A_Plume_Management_Zone.mxd Date: 1/6/2017 Time: 1:16:26 PM



- Proposed Wells for RAP**
- Up-gradient Well
 - Down-gradient Well
 - Cover monitoring Well
 - Gradient Monitoring Well for Plume Management Zone
 - Alternate POE for PMZ
 - Attenuation Monitoring Well
 - PRB Monitoring Well
 - GHB Pumping Well
 - GHB Monitoring Well

- LEGEND:**
- Plume Management Zone
 - Historical Arroyo Trace Lines (subsurface)
 - Property Boundary

Note:
 1. Details of Response Action will be coordinated with off-site property owners.



Service Layer Credits: Source: Esri, DigitalGlobe, GeoEye, Earthstar Geographics, CNES/Airbus DS, USDA, USGS, AeroGRID, IGN, and the GIS User Community

FORMER EL PASO SMELTER SITE EL PASO, TEXAS	
PLUME MANAGEMENT ZONE	
	ATTACHMENT 2A