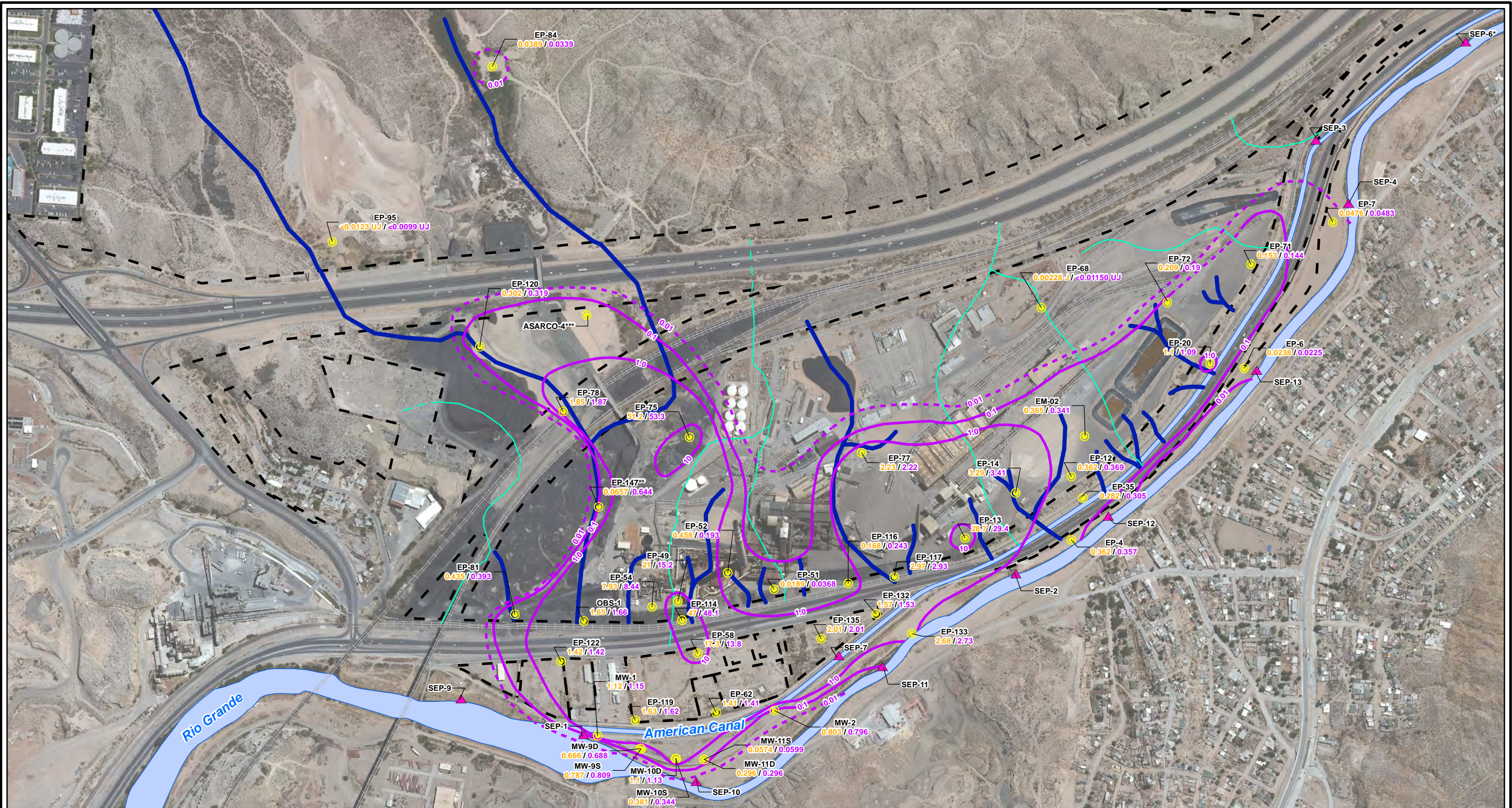


CITY: Highlands Ranch DIV/GROUP: GIS DB: BG
 Project (Project #):
 Path: I:\ASARCO - El Paso\GIS\MXD\RIJ_ Revised\Fig 4-63 Arsenic GW_Fall2012.mxd Date: 7/3/2013 Time: 12:37:29 PM



LEGEND:

- Monitoring Wells
- ▲ Surface Water Stations
- EP-75** Well ID
- 51.2 / 53.3** Dissolved Arsenic/Total Arsenic (mg/L)
- Total Arsenic Contours (mg/L)
(Dashed where inferred)
- Historical Arroyo Trace Lines
- - - Property Boundary
- Historical Drainage Divide

Note:
 Arsenic Screening Level = 0.01 mg/L (EPA Drinking Water MCL)
 EPA = Environmental Protection Agency
 J = The reported value was obtained from a reading that was less than reporting limit but greater than or equal to the method detection limit.
 UJ = Estimated reporting limit
 MCL = Maximum Contaminant Level
 mg/L = milligrams per liter
 < = Non detect at the reporting limit shown
 *Actual location of SEP-6 is approximately one mile further downstream on the American Canal.
 **Data collected October 2012
 ***TxDOT monitoring well not sampled

DRAFT

0 600 1,200 Feet

GRAPHIC SCALE

FORMER EL PASO SMELTER SITE
 EL PASO, TEXAS

**ARSENIC DISTRIBUTION IN GROUNDWATER
 FALL 2012**

**MALCOLM
 PIRNIE**

**FIGURE
 4-63**