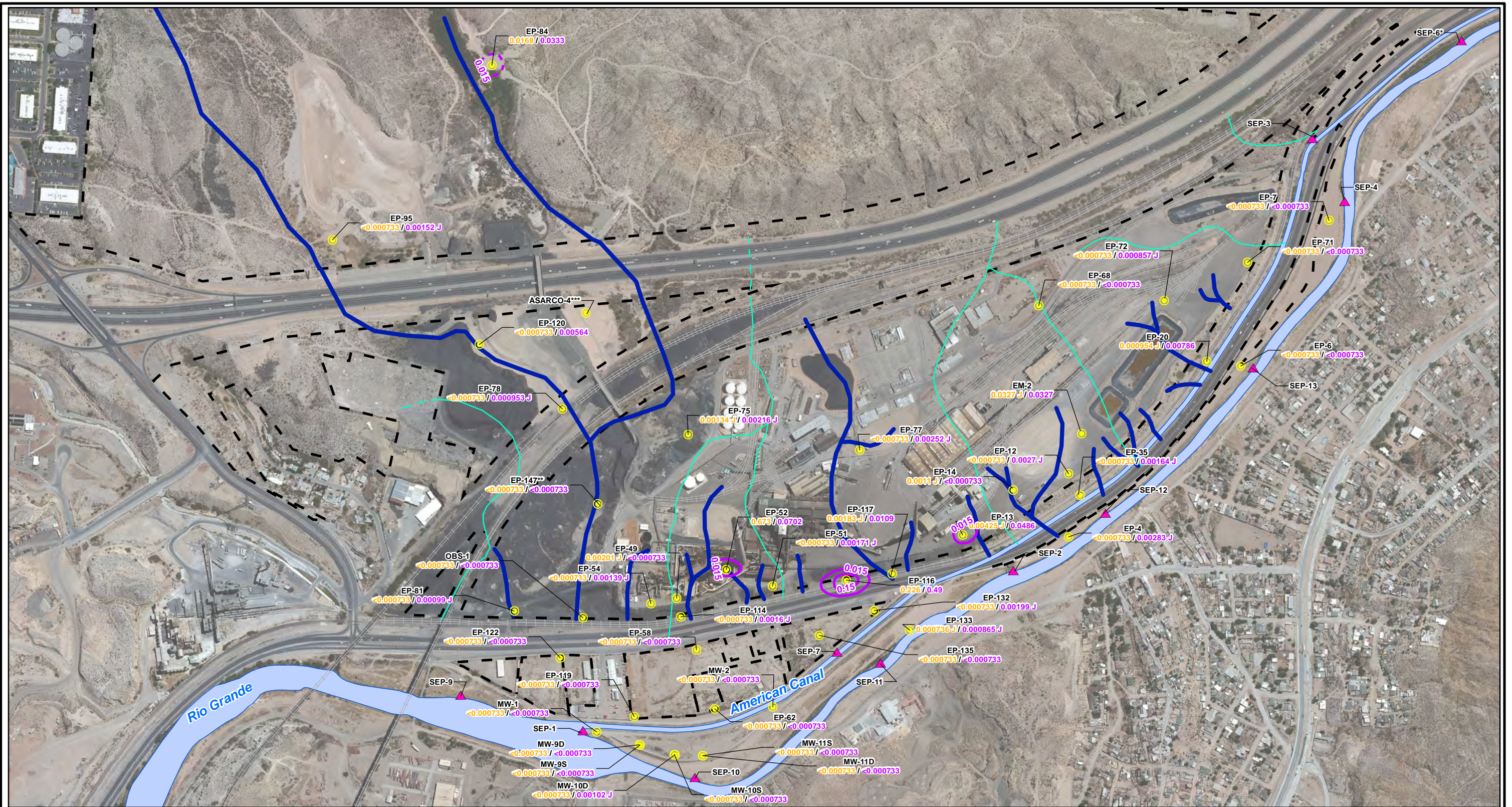


CITY: Highlands Ranch DIV/GROUP: GIS DB: BG
 Project (Project #):
 Path: \\ASARCO\GIS\IMXD\RI_ Revised\Fig 4-69 Lead_GW_Fall2012.mxd Date: 7/3/2013 Time: 12:47:57 PM



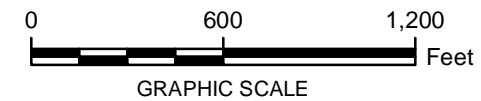
LEGEND:

- Monitoring Wells
- ▲ Surface Water Stations
- Total Lead Contours (mg/L)
(Dashed where Inferred)
- Historical Arroyo Trace Lines
- Property Boundary
- Historical Drainage Divide

EP-81 Well ID
<0.000733 / 0.00099 J Dissolved Lead/Total Lead (mg/L)

Note:
 Lead Screening Level = 0.015 mg/L (EPA Drinking Water MCL)
 EPA = Environmental Protection Agency
 J = The reported value was obtained from a reading that was less than reporting limit but greater than or equal to the method detection limit.
 MCL = Maximum Contaminant Level
 mg/L = milligrams per liter
 < = Non detect at the reporting limit shown
 *Actual location of SEP-6 is approximately one mile further downstream on the American Canal.
 **Data collected October 2012
 ***TxDOT monitoring well not sampled

DRAFT



FORMER EL PASO SMELTER SITE
 EL PASO, TEXAS

**LEAD DISTRIBUTION IN GROUNDWATER
 FALL 2012**

**MALCOLM
 PIRNIE**

**FIGURE
 4-69**