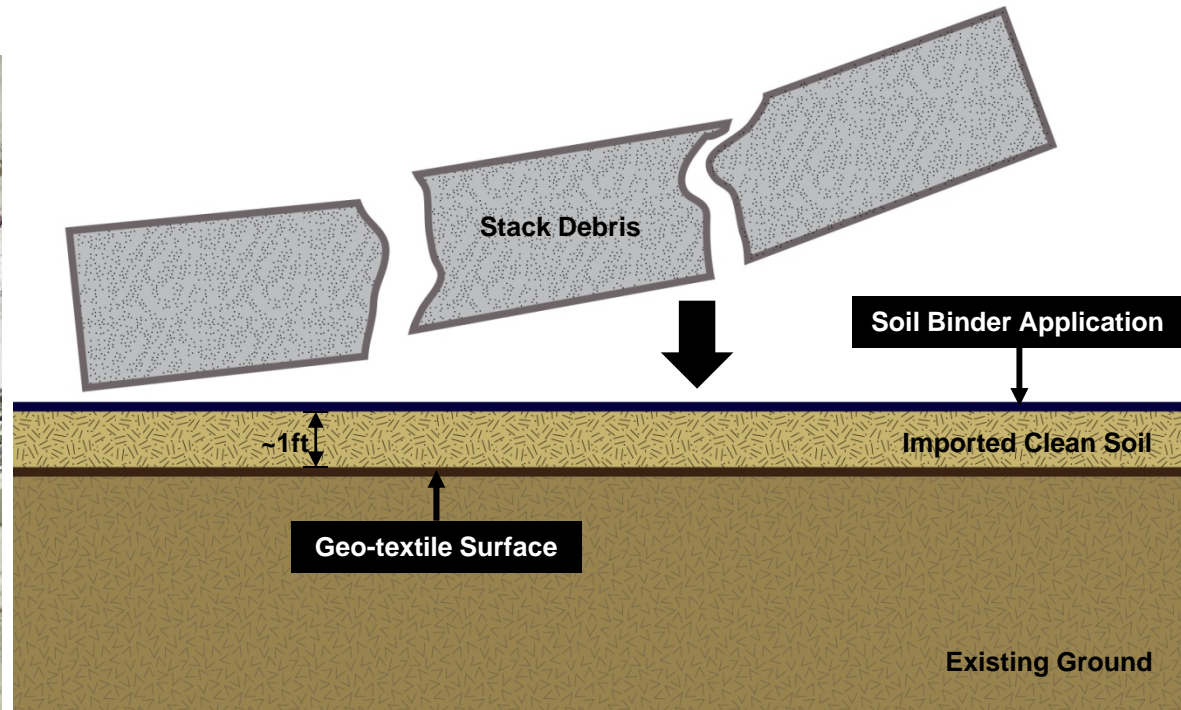
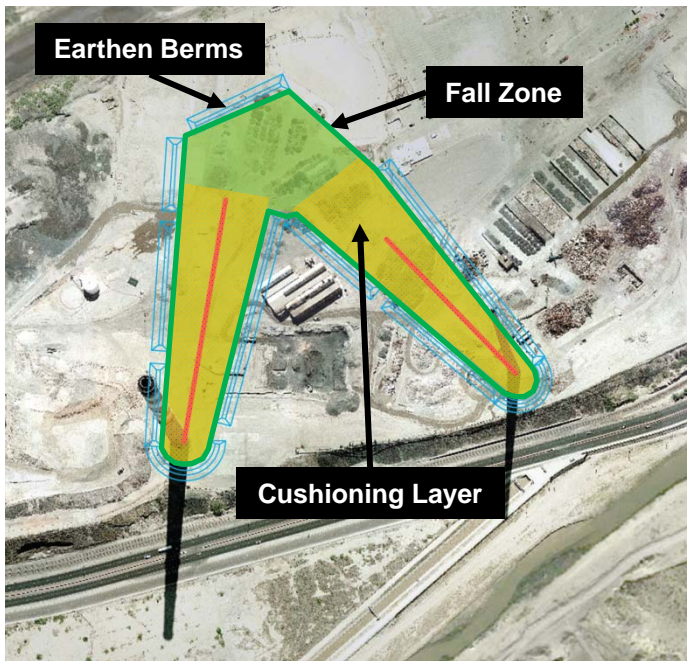


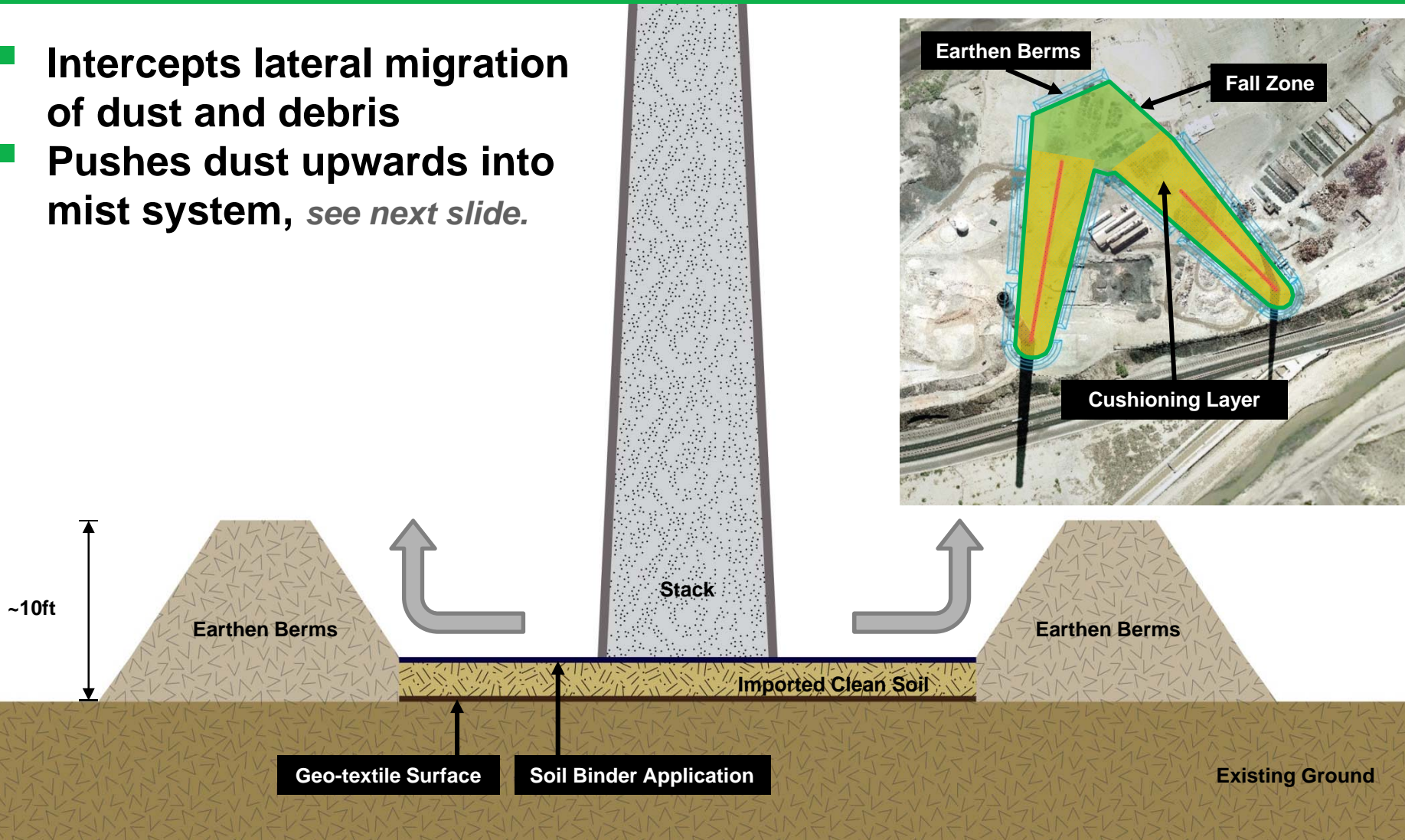
# Cushioning Layers

- Prevents dust from rising from existing ground surface
- Minimizes dust from stack impact with ground



# Earthen Berms

- Intercepts lateral migration of dust and debris
- Pushes dust upwards into mist system, *see next slide.*



# Water Mist Dust Capture

- 22 Locations putting out ~2800 gallons per minute of water
- Water atomizers minimizes dust

