

Weekly Construction Progress Report #57

Period: 12/30/12 through 1/5/13

Project Work Performed:

- Field activities resumed January 3rd.
- Continued interim construction survey staking to identify subgrade elevations.
- Continued compliance monitoring including air monitoring, weather monitoring, SWPPP monitoring and fugitive dust monitoring.
- Continued to screen and process CAT II soils to meet structural fill material conformance specifications associated with the CAT II Placement Plan.
- Completed basement preparation activities associated with the ConTop basement. Activities included the removal of protruding rebar, removal of miscellaneous loose debris and subgrade preparation activities.
- Began the loading, hauling, placement, compaction and grading CAT II materials within the ConTop Basement.
- Continued to collect field nuclear density testing to confirm compaction requirements.

Work Projected Next Week:

- Continue interim construction survey staking to identify subgrade elevations.
- Continue compliance monitoring including air monitoring, weather monitoring, SWPPP monitoring and fugitive dust monitoring.
- Continue to screen and process CAT II soils to meet structural fill material conformance specifications associated with the CAT II Placement Plan.
- Continue the loading, hauling, placement, compaction and grading CAT II materials within the ConTop Basement.
- Continue to collect field nuclear density testing to confirm compaction requirements.
- Begin characterization sampling within the East Borrow Area to define Category 1 material limits.

Former ASARCO Smelter Facility

Category 1 Landfill Construction

El Paso, TX



Category II compaction activities within the ConTop Basement



Category II backfill activities within the ConTop Basement



Screening of Category II materials to meet 3-inch minus backfill specifications

Weekly Construction Progress Report #57 (Continued)

Period: 12/30/12 through 1/5/13

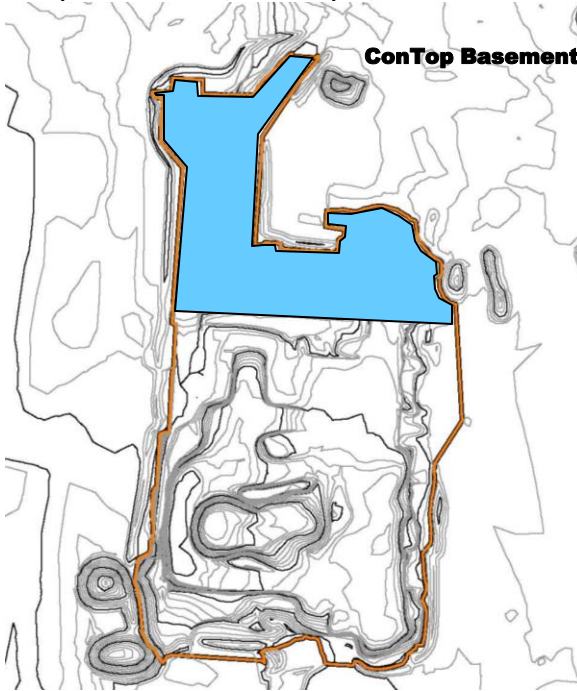
Action Items/Safety:

- Loss Prevention System (LPS) tools
 - Loss Prevention Observation (LPO) – 2 (108)
 - Job Safety Analysis (JSAs) – 0 (8)
 - Near Loss – 0 (7)
 - Minor Equipment Damage – 0 (3)
 - Incidents – 0 (2)
 - Stop Work Authority 0 – (7)

Prepared by EJ Suardini, January 8, 2013



*Completed backfill of Ore Unloading
Basement*



Progress Legend

Blue – Ongoing placement of structural fill

Estimated Weekly Volume

| | Estimated Quantity of CAT II Placement (Tons) | Estimated Quantity of East Borrow Excavation | Estimated Quantity of Structural Fill Material Installed PBA and CAT 1 (Tons) | Estimated Quantity of Subgrade Prepared (Tons) |
|---------------|---|--|---|--|
| Weekly Total | 3,840 | 0 | 0 | 0 |
| Total to Date | 33,480 | 293,563 | 186,860 | 0 |