

Weekly Construction Progress Report #9

Period: 1/2/12 through 1/7/12

Project Work Performed:

- Continued the excavation, loading, hauling and stockpiling of targeted mass excavation materials.
- Continued sizing large sandstone pieces with an excavator equipped with a hydraulic breaker to all for loading, hauling and stockpiling activities.
- Continued breaking dense rock layers with the excavator equipped with a hydraulic breaker in areas the large dozer could not rip through the material
- Continued interim construction survey staking to identify subgrade elevations
- Continued compliance monitoring including air monitoring, weather monitoring, SWPPP monitoring and fugitive dust monitoring.
- Received approved grading and excavation plan associated with Parker Brothers Arroyo to the City of El Paso.

Work Projected Next Week:

- Continue the excavation, loading, hauling and stockpiling of targeted mass excavation materials.
- Continue sizing large sandstone pieces with an excavator equipped with a hydraulic breaker to all for loading, hauling and stockpiling activities.
- Continue breaking dense rock layers with the excavator equipped with a hydraulic breaker in areas the large dozer could not rip through the material.
- Continue interim construction survey staking to identify subgrade elevations.
- Begin the installation of soil erosion and sedimentation control BMPs within the newly approved stockpile location (Former Acid Plant Area).
- Continue compliance monitoring including air monitoring, weather monitoring, SWPPP monitoring and fugitive dust monitoring.

Former ASARCO Smelter Facility

Category 1 Landfill Construction

El Paso, TX



Loading targeted mass excavation materials from within the Category 1 Landfill footprint.



Excavation activities within the Category 1 Landfill footprint.



Breaking dense rock layer with a hydraulic breaker attached to an excavator.

Weekly Construction Progress Report #9 (Continued)

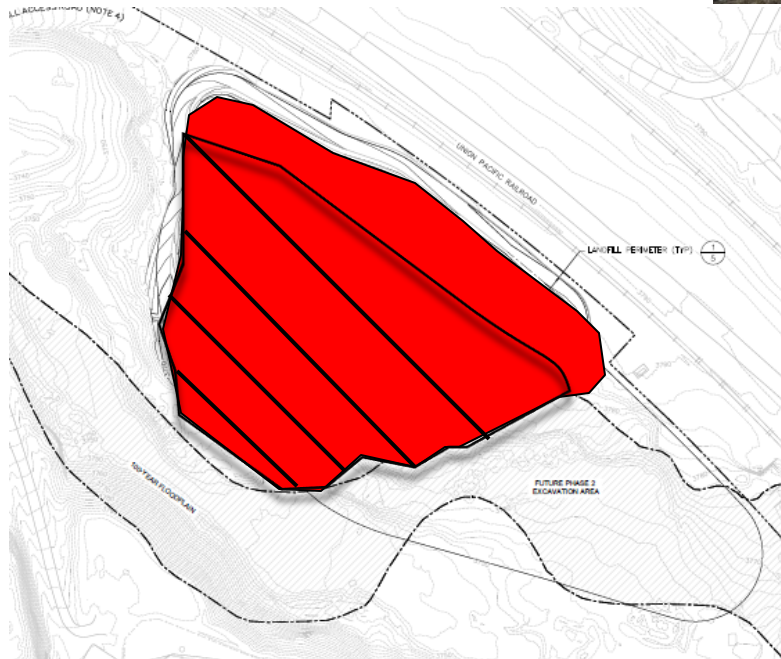
Period: 1/1/12 through 1/7/12

Action Items/Safety:

- Loss Prevention System (LPS) tools
 - Loss Prevention Observation (LPO) – 2 (14)
 - Job Safety Analysis (JSAs) – 0 (3)
 - Near Loss – 0 (2)
 - Minor Equipment Damage – 0 (3)
 - Incidents – 0 (1)
 - Stop Work Authority 0 – (2)



Prepared by EJ Suardini, January 11, 2012



Dust control activities within the Category 1 Landfill footprint.

Progress Legend

**Blue – (Complete)
Excavation of Slag**

**Green – (Complete)
Excavation of Impacted soil
beneath Slag**

Red – Mass Excavation Activity

**Red (Hatch) – Current Work
Area**

Estimated Weekly Volume				
	Estimated Quantity of Slag Removed (Tons)	Estimated Quantity of Mass Excavation (Tons)*	Estimated Quantity of Toe Berm Material Installed (Tons)	Estimated Quantity of Subgrade Prepared (Tons)
Weekly Total	0	20,320	0	0
Total to Date	26,835	151,683	0	0

***Quantity includes the excavation of soil impacted material beneath slag.**