

Weekly Construction Progress Report #58

Period: 1/6/13 through 1/12/13

Project Work Performed:

- Continued interim construction survey staking to identify subgrade elevations.
- Continued compliance monitoring including air monitoring, weather monitoring, SWPPP monitoring and fugitive dust monitoring.
- Continued to screen and process CAT II soils to meet structural fill material conformance specifications associated with the CAT II Placement Plan.
- Continued the loading, hauling, placement, compaction and grading CAT II materials within the ConTop Basement.
- Continued to collect field nuclear density testing to confirm compaction requirements.
- Began characterization sampling within the East Borrow Area to define Category 1 material limits.

Work Projected Next Week:

- Continue interim construction survey staking to identify subgrade elevations.
- Continue compliance monitoring including air monitoring, weather monitoring, SWPPP monitoring and fugitive dust monitoring.
- Continue to screen and process CAT II soils to meet structural fill material conformance specifications associated with the CAT II Placement Plan.
- Continue the loading, hauling, placement, compaction and grading CAT II materials within the ConTop Basement.
- Continue to collect field nuclear density testing to confirm compaction requirements.
- Continue characterization sampling within the East Borrow Area to define Category 1 material limits.
- Begin basement preparation activities associated with the Engineering Trench.

Former ASARCO Smelter Facility

Category 1 Landfill Construction

El Paso, TX



Placement of Category II backfill within the ConTop Basement



Category II backfill activities within the ConTop Basement



Category II compaction and grading activities within the ConTop Basement

Weekly Construction Progress Report #58 (Continued)

Period: 1/6/13 through 1/12/13

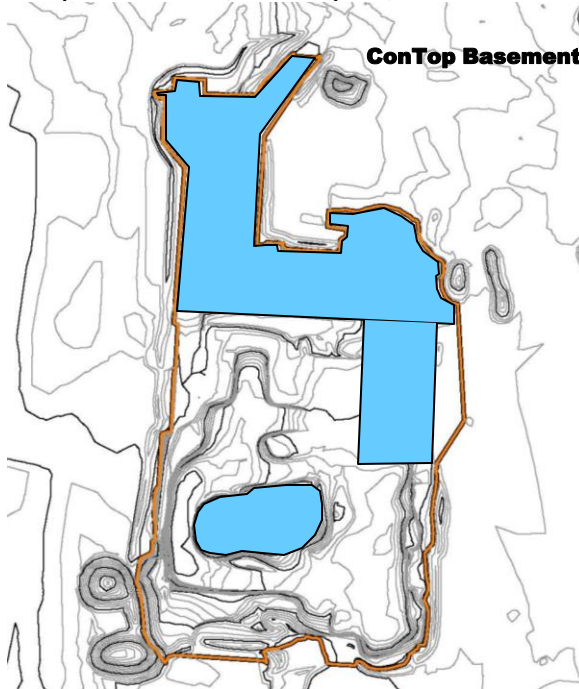
Action Items/Safety:

- Loss Prevention System (LPS) tools
 - Loss Prevention Observation (LPO) – 2 (110)
 - Job Safety Analysis (JSAs) – 0 (8)
 - Near Loss – 0 (7)
 - Minor Equipment Damage – 0 (3)
 - Incidents – 0 (2)
 - Stop Work Authority 0 – (7)

Prepared by EJ Suardini, January 15, 2013



Excavation of Category II materials from within existing stockpile #1



Progress Legend

Blue – Ongoing placement of structural fill

Estimated Weekly Volume

	Estimated Quantity of CAT II Placement (Tons)	Estimated Quantity of East Borrow Excavation	Estimated Quantity of Structural Fill Material Installed PBA and CAT 1 (Tons)	Estimated Quantity of Subgrade Prepared (Tons)
Weekly Total	11,320	0	0	0
Total to Date	44,800	293,563	186,860	0