

Weekly Construction Progress Report #10

Period: 1/8/12 through 1/14/12

Project Work Performed:

- Continued the excavation, loading, hauling and stockpiling of targeted mass excavation materials.
- Continued sizing large sandstone pieces with an excavator equipped with a hydraulic breaker to allow for loading, hauling and stockpiling activities.
- Continued breaking dense rock layers with the excavator equipped with a hydraulic breaker in areas the large dozer could not rip through the material
- Continued interim construction survey staking to identify subgrade elevations
- Begin the installation of soil erosion and sedimentation control BMPs within the newly approved stockpile location (Former Acid Plant Area).
- Began stockpiling mass excavation materials within the newly approved stockpile area.
- Continued compliance monitoring including air monitoring, weather monitoring, SWPPP monitoring and fugitive dust monitoring.

Work Projected Next Week:

- Begin the excavation, loading, hauling and stockpiling slag material within the floodplain area.
- Continue interim construction survey staking to identify subgrade elevations.
- Begin the installation of soil erosion and sedimentation control BMPs within the newly approved stockpile location (Former Acid Plant Area).
- Continue compliance monitoring including air monitoring, weather monitoring, SWPPP monitoring and fugitive dust monitoring.

Former ASARCO Smelter Facility

Category 1 Landfill Construction

El Paso, TX



Loading targeted mass excavation materials from within the Category 1 Landfill footprint.



Excavation activities within the Category 1 Landfill footprint.



Breaking dense rock layer with a hydraulic breaker attached to an excavator.

Weekly Construction Progress Report #10 (Continued)

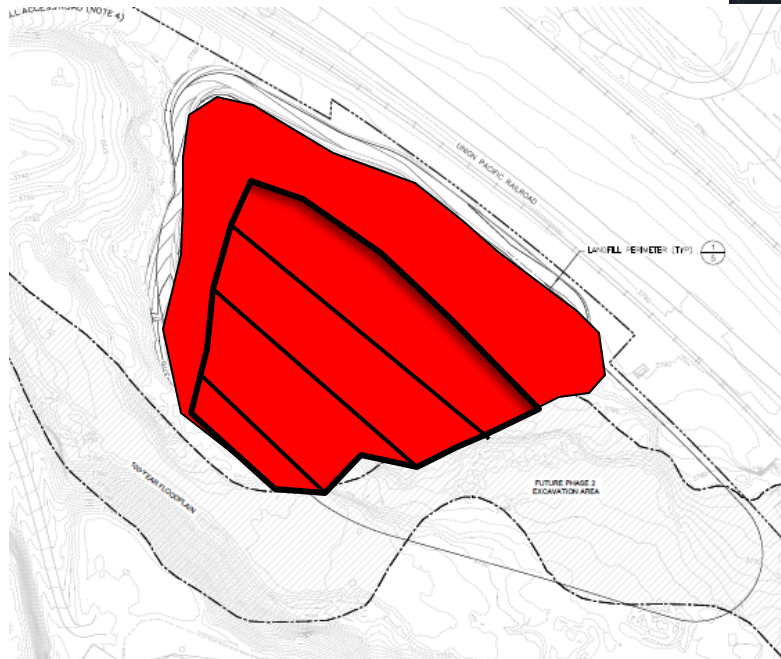
Period: 1/8/12 through 1/14/12

Action Items/Safety:

- Loss Prevention System (LPS) tools
 - Loss Prevention Observation (LPO) – 2 (16)
 - Job Safety Analysis (JSAs) – 0 (3)
 - Near Loss – 0 (2)
 - Minor Equipment Damage – 0 (3)
 - Incidents – 0 (1)
 - Stop Work Authority 0 – (2)



Prepared by EJ Suardini, January 18, 2012



Dust control activities within the Category 1 Landfill footprint.

Progress Legend

**Blue – (Complete)
Excavation of Slag**

**Green – (Complete)
Excavation of Impacted soil
beneath Slag**

Red – Mass Excavation Activity

**Red (Hatch) – Current Work
Area**

Estimated Weekly Volume

	Estimated Quantity of Slag Removed (Tons)	Estimated Quantity of Mass Excavation (Tons)*	Estimated Quantity of Toe Berm Material Installed (Tons)	Estimated Quantity of Subgrade Prepared (Tons)
Weekly Total	0	24,160	0	0
Total to Date	26,835	175,843	0	0

***Quantity includes the excavation of soil impacted material beneath slag.**