

Weekly Construction Progress Report #61

Period: 1/27/13 through 2/2/13

Project Work Performed:

- Continued interim construction survey staking to identify subgrade elevations.
- Continued compliance monitoring including air monitoring, weather monitoring, SWPPP monitoring and fugitive dust monitoring.
- Continued to screen and process CAT II soils to meet structural fill material conformance specifications associated with the CAT II Placement Plan.
- Completed the loading, hauling, placement, compaction and grading CAT II materials within the ConTop Basement.
- Continued to collect field nuclear density testing to confirm compaction requirements.
- Continued characterization sampling within the East Borrow Area to define Category 1 material limits.
- Completed basement preparation activities associated with the Engineering Trench.
- Completed the relocation of ConTop slag pile.
- Completed the initial removal of PCB and Mercury impacted soils.

Work Projected Next Week:

- Continue interim construction survey staking to identify subgrade elevations.
- Continue compliance monitoring including air monitoring, weather monitoring, SWPPP monitoring and fugitive dust monitoring.
- Continue to screen and process CAT II soils to meet structural fill material conformance specifications associated with the CAT II Placement Plan.
- Begin and complete the loading, hauling, placement, compaction and grading CAT II materials within the Engineering Trench and Basement.
- Continue to collect field nuclear density testing to confirm compaction requirements.
- Begin the construction of south stack demolition berms.

Former ASARCO Smelter Facility

Category 1 Landfill Construction

El Paso, TX



Grading of Category II backfill within the ConTop Basement



Category II soil conditioning and compaction within the ConTop Basement



Relocation activities associated with the ConTop slag pile

Weekly Construction Progress Report #61 (Continued)

Period: 1/27/13 through 2/2/13

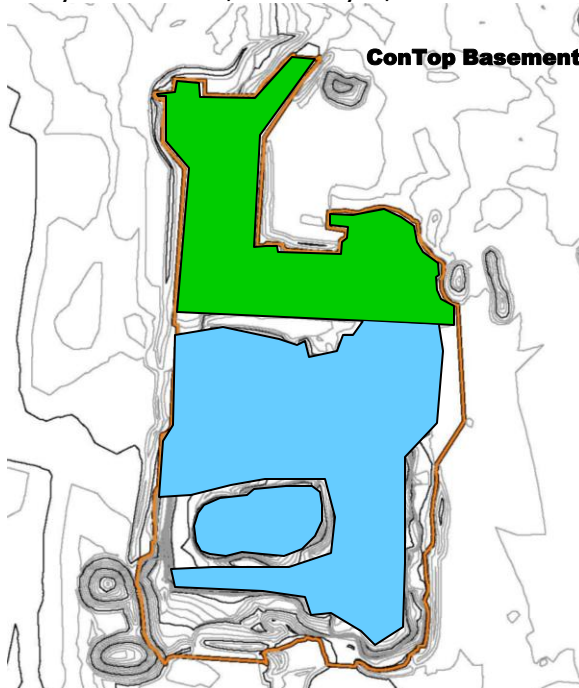
Action Items/Safety:

- Loss Prevention System (LPS) tools
 - Loss Prevention Observation (LPO) – 2 (116)
 - Job Safety Analysis (JSAs) – 0 (8)
 - Near Loss – 0 (7)
 - Minor Equipment Damage – 0 (3)
 - Incidents – 0 (2)
 - Stop Work Authority 0 – (7)



Hauling and stockpiling activities associated with the ConTop slag materials

Prepared by EJ Suardini, February 5, 2013



Progress Legend

Blue – Ongoing placement of structural fill

Green – Backfill Completed

Estimated Weekly Volume

	Estimated Quantity of CAT II Placement (Tons)	Estimated Quantity of East Borrow Excavation (Tons)	Estimated Quantity of ConTop Slag Pile Relocated (Tons)	Estimated Quantity of Structural Fill Material Installed PBA and CAT 1 (Tons)	Estimated Quantity of Subgrade Prepared (Tons)
Weekly Total	5,580	0	13,240	0	0
Total to Date	66,300	293,563	36,400	186,860	0