

Weekly Construction Progress Report #68

Period: 3/17/13 through 3/23/13

Project Work Performed:

- Continued interim construction survey staking to identify subgrade elevations.
- Continued compliance monitoring including air monitoring, weather monitoring, SWPPP monitoring and fugitive dust monitoring.
- Continued to collect field nuclear density testing to confirm compaction requirements.
- Completed backfill installation from the East Borrow Area within the footprint of the PBA Channel. Activities will include the excavation, hauling, placement, moisture conditioning, compacting and grading.
- Began taking delivery of Category I Landfill geosynthetics. Geosynthetics were stored within a covered building on the adjacent property.
- Began preparing existing subgrade and completed initial site preparation activities within Stockpile #2 in preparation of the continuation of Category II backfill installation within the ConTop Basement.

Work Projected Next Week:

- Continue interim construction survey staking to identify subgrade elevations.
- Continue compliance monitoring including air monitoring, weather monitoring, SWPPP monitoring and fugitive dust monitoring.
- Continue to collect field nuclear density testing to confirm compaction requirements.
- Continue taking delivery of Category I Landfill geosynthetics. Geosynthetics will be stored within a covered building on the adjacent property.
- Continue the backfill activities within the southern end of the ConTop Basement with Category II material from within Stockpile #2.

Former ASARCO Smelter Facility

Category 1 Landfill Construction

El Paso, TX



Backfill installation activities within the PBA Channel



Installation of structural backfill within the PBA Channel



Moisture conditioning and compaction of structural backfill within the PBA Channel

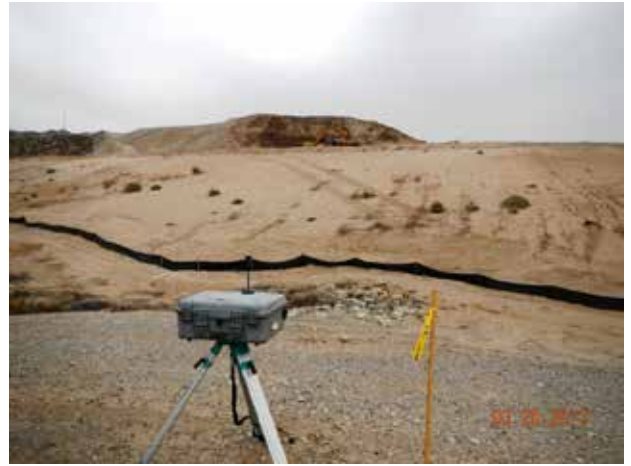
Weekly Construction Progress Report #68 (Continued)

Period: 3/17/13 through 3/23/13

Action Items/Safety:

- Loss Prevention System (LPS) tools
 - Loss Prevention Observation (LPO) – 2 (129)
 - Job Safety Analysis (JSAs) – 0 (10)
 - Near Loss – 1 (10)
 - Minor Equipment Damage – 0 (3)
 - Incidents – 0 (2)
 - Stop Work Authority 0 – (7)

Prepared by EJ Suardini, March 26, 2013



Perimeter air monitoring station located near the East Borrow Area



Progress Legend

Red - Category 1 Landfill

Green - PBA Channel

Blue - Backfill Activities

Estimated Weekly Volume

	Estimated Quantity of CAT II Placement (Tons)	Estimated Quantity of East Borrow Excavation (Tons)	Estimated Quantity of ConTop Slag Pile Relocated (Tons)	Estimated Quantity of Structural Fill Material Installed PBA and CAT 1 (Tons)	Estimated Quantity of South Stack Berm Material (Tons)
Weekly Total	0	5,200	0	5,200	0
Total to Date	78,940	41,880	36,400	228,340	31,920