

## Weekly Construction Progress Report #79

Period: 6/2/13 through 6/8/13

### Project Work Performed:

- Continued interim construction survey staking to identify subgrade elevations.
- Continued compliance monitoring including air monitoring, weather monitoring, SWPPP monitoring and fugitive dust monitoring.
- Continued to collect field nuclear density testing to confirm compaction requirements.
- Continued processing existing crushed concrete to remove excess woody and metal debris.
- Completed grading activities within the PBA Channel.
- Continued plant slope stabilization activities. Activities included the removal of loose material from the slope in Area 2.
- Continued screening select protective layer materials to be placed within the CAT I Landfill. Materials were screened to meet the technical specifications identified within the Construction Quality Assurance Plan (CQAP).
- Began the installation of the geosynthetic protective layer within the CAT I Landfill.

### Work Projected Next Week:

- Continue interim construction survey staking to identify subgrade elevations.
- Continue compliance monitoring including air monitoring, weather monitoring, SWPPP monitoring and fugitive dust monitoring.
- Continue to collect field nuclear density testing to confirm compaction requirements.
- Continue plant slope stabilization activities. Activities will include the removal of loose material from the slope in Area 2.
- Continue to screen select protective layer materials to be placed within the CAT I Landfill. Materials will be screened to meet the technical specifications identified within the Construction Quality Assurance Plan (CQAP).
- Continue the installation of the geosynthetic protective layer within the CAT I Landfill.

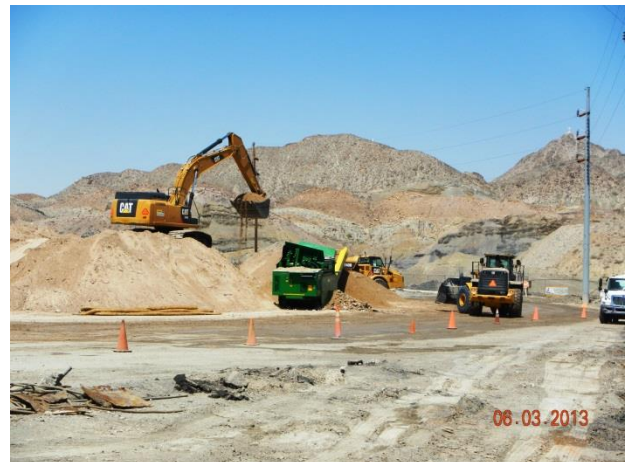
## Former ASARCO Smelter Facility

## Site Wide Construction Activities

## El Paso, TX



*Plant slope stabilization activities within Area 2.*



*Screening of Category II material to produce protective layer material from Stockpile #2*



*Installation of geosynthetic protective layer within CAT I Landfill*

## Weekly Construction Progress Report #79 (Continued)

**Period:** 6/2/13 through 6/8/13

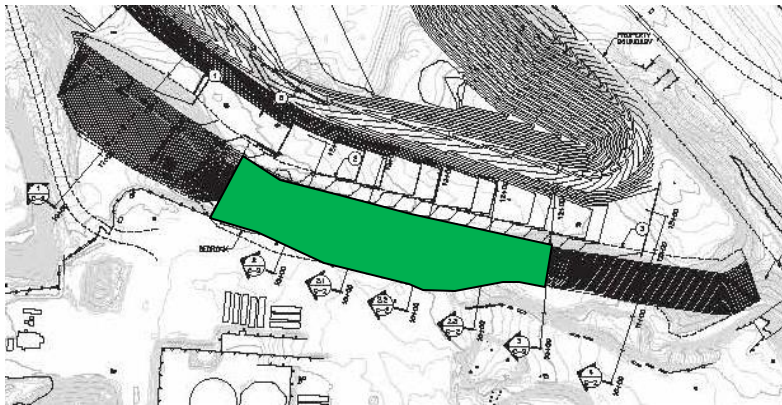
### Action Items/Safety:

- Loss Prevention System (LPS) tools
  - Loss Prevention Observation (LPO) – 2 (151)
  - Job Safety Analysis (JSAs) – 0 (10)
  - Near Loss – 0 (10)
  - Minor Equipment Damage – 1 (6)
  - Incidents – 0 (2)
  - Stop Work Authority 0 – (7)

Prepared by EJ Suardini, June 11, 2013



*Grading within the PBA Channel*



### Progress Legend

**Green – Plant Slope  
Stabilization Activities**

Estimated Weekly Volume							
	Estimated Quantity of CAT II Placement (Tons)	Estimated Quantity of East Borrow Excavation (Tons)	Estimated Quantity of 2-Foot Protective Layer Installed (Tons)	Estimated Quantity of Structural Fill Material Installed PBA and CAT 1 (Tons)	Estimated Quantity of GCL (Square Feet)	Estimated Quantity of FML (Square Feet)	Estimated Quantity of GDC (Square Feet)
Weekly Total	0	0	6,140	1,800	0	0	0
Total to Date	133,260	41,880	6,140	235,580	207,225	207,225	58,500