

### Weekly Construction Progress Report #80

Period: 6/9/13 through 6/15/13

#### Project Work Performed:

- Continued interim construction survey staking to identify subgrade elevations.
- Continued compliance monitoring including air monitoring, weather monitoring, SWPPP monitoring and fugitive dust monitoring.
- Continued to collect field nuclear density testing to confirm compaction requirements.
- Continued plant slope stabilization activities. Activities will include the removal of loose material from the slope in Area 2.
- Continued to screen select protective layer materials to be placed within the CAT I Landfill. Materials will be screened to meet the technical specifications identified within the Construction Quality Assurance Plan (CQAP).
- Began and completed the installation and compaction of CAT II materials within a former building basement.

#### Work Projected Next Week:

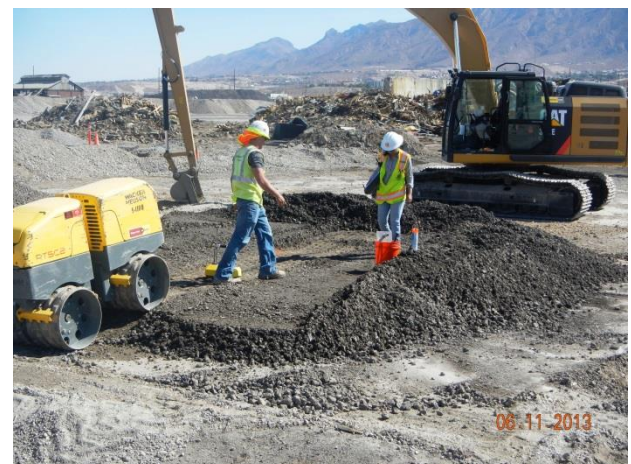
- Continue interim construction survey staking to identify subgrade elevations.
- Continue compliance monitoring including air monitoring, weather monitoring, SWPPP monitoring and fugitive dust monitoring.
- Continue to collect field nuclear density testing to confirm compaction requirements.
- Continue plant slope stabilization activities. Activities will include the removal of loose material from the slope in Area 2.
- Continue to screen select protective layer materials to be placed within the CAT I Landfill. Materials will be screened to meet the technical specifications identified within the Construction Quality Assurance Plan (CQAP).
- Begin and complete the construction of leachate collection sump. Activities will include the installation of a non-woven geotextile, 18-inch HDPE piping and poorly graded gravel.
- Continue the installation of the geosynthetic protective layer within the CAT I Landfill.



*Removing loose debris within plant basement prior to backfill installation*



*Screening of Category II material to produce protective layer material from Stockpile #2*



*Field density testing within plant basement*

## Weekly Construction Progress Report #80 (Continued)

**Period:** 6/9/13 through 6/15/13

### Action Items/Safety:

- Loss Prevention System (LPS) tools
  - Loss Prevention Observation (LPO) – 2 (153)
  - Job Safety Analysis (JSAs) – 0 (10)
  - Near Loss – 0 (10)
  - Minor Equipment Damage – 0 (6)
  - Incidents – 0 (2)
  - Stop Work Authority 0 – (7)

Prepared by EJ Suardini, June 18, 2013



*Plant slope stabilization activities within Area 2*



### Progress Legend

**Green – Plant Slope  
Stabilization Activities**

Estimated Weekly Volume							
	Estimated Quantity of CAT II Placement (Tons)	Estimated Quantity of East Borrow Excavation (Tons)	Estimated Quantity of 2-Foot Protective Layer Installed (Tons)	Estimated Quantity of Structural Fill Material Installed PBA and CAT 1 (Tons)	Estimated Quantity of GCL (Square Feet)	Estimated Quantity of FML (Square Feet)	Estimated Quantity of GDC (Square Feet)
Weekly Total	1,040	0	0	0	0	0	0
Total to Date	134,300	41,880	6,140	235,580	207,225	207,225	58,500