

Weekly Construction Progress Report #31

Period: 6/10/12 through 6/16/12

Project Work Performed:

- Continued interim construction survey staking to identify subgrade elevations.
- Completed the mass excavation, loading, hauling and stockpiling of materials from within the Category 1 Landfill footprint.
- Completed rough grading of the Category 1 Landfill side slopes and floor.
- Completed excavation of diesel impacted soils located in the northeast corner of the Category 1 Landfill footprint.
- Completed breaking the remaining material from within the Category 1 Landfill footprint.
- Completed managing mass excavation materials within the stockpiles located near the former Zinc Plant.
- Completed the removal of slag material outside of the southwest corner of the Category 1 Landfill footprint.
- Began and completed site preparation, install soil erosion and sedimentation controls and mobilize a screen to process clean stockpiled materials for future backfill.
- Continued compliance monitoring including air monitoring, weather monitoring, SWPPP monitoring and fugitive dust monitoring.

Work Projected Next Week:

- Continue interim construction survey staking to identify subgrade elevations.
- Begin to screen and process clean onsite stockpile soils to meet structural fill material conformance specifications.
- Begin to load, transport, place, moisture condition and compact structural backfill within the Category 1 Landfill footprint to meet subgrade elevations.
- Continue compliance monitoring including air monitoring, weather monitoring, SWPPP monitoring and fugitive dust monitoring.

Former ASARCO Smelter Facility

Category 1 Landfill Construction

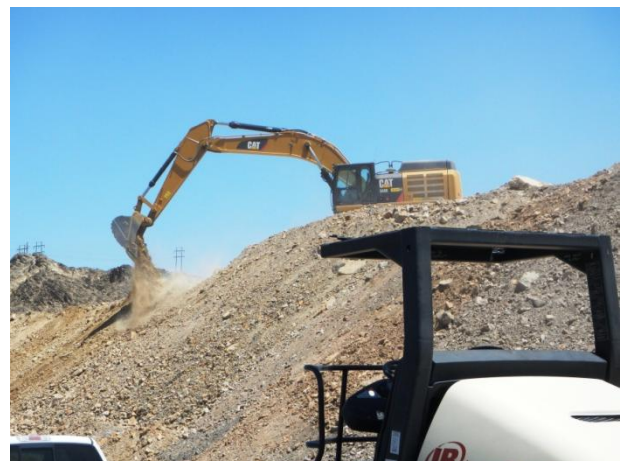
El Paso, TX



Excavation activities within the Category 1 Landfill footprint



Setup activities associated with mobile screen



Excavation of clean stockpile materials associated with structural backfill materials.

Weekly Construction Progress Report #31
(Continued)

Period: 6/10/12 through 6/16/12

Action Items/Safety:

- Loss Prevention System (LPS) tools
 - Loss Prevention Observation (LPO) – 2 (58)
 - Job Safety Analysis (JSAs) – 0 (5)
 - Near Loss – 0 (5)
 - Minor Equipment Damage – 0 (3)
 - Incidents – 0 (2)
 - Stop Work Authority 0 – (7)



Stockpiling excavated slag materials.

Prepared by EJ Suardini, June 20, 2012



Progress Legend

Blue – (Complete)
Excavation of Slag

Green – (Complete)
Excavation of Impacted soil
beneath Slag

Red – Mass Excavation Activity

Red (Hatch) – Current Work
Area

Orange – Removed
Sanitary/Storm Sewer Piping

Purple – Earthen Buttress
(Complete)

Estimated Weekly Volume

	Estimated Quantity of Slag Removed (Tons)	Estimated Quantity of Mass Excavation (Tons)*	Estimated Quantity of Toe Berm Material Installed (Tons)	Estimated Quantity of Subgrade Prepared (Tons)
Weekly Total	6,320	800	0	0
Total to Date	318,947	293,563	0	0

***Quantity includes the excavation of soil impacted material beneath slag.**