

## Weekly Construction Progress Report #40

Period: 8/19/12 through 8/25/12

### Project Work Performed:

- Continued interim construction survey staking to identify subgrade elevations.
- Continued to screen and process clean onsite stockpile soils to meet structural fill material conformance specifications.
- Continued to load, transport, place, moisture condition and compact structural backfill within the Category 1 Landfill footprint to meet subgrade elevations.
- Relocated screen to second clean stockpile location near the former acid plant.
- Continued compliance monitoring including air monitoring, weather monitoring, SWPPP monitoring and fugitive dust monitoring.
- Collected geotechnical samples of Russell Sand and Gravel materials associated with PRB 1.

### Work Projected Next Week:

- Continue interim construction survey staking to identify subgrade elevations.
- Continue to screen and process clean onsite stockpile soils to meet structural fill material conformance specifications.
- Relocate screen to second clean stockpile location near the former acid plant.
- Continue to load, transport, place, moisture condition and compact structural backfill within the Category 1 Landfill footprint to meet subgrade elevations.
- Continue compliance monitoring including air monitoring, weather monitoring, SWPPP monitoring and fugitive dust monitoring.

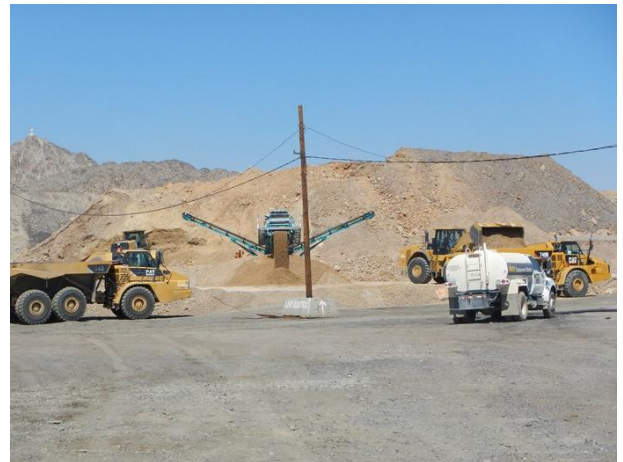
## Former ASARCO Smelter Facility

### Category 1 Landfill Construction

El Paso, TX



*Structural backfill placement and compaction*



*Material processing activities associated with mobile screen*



*PBA current conditions*

## Weekly Construction Progress Report #40 (Continued)

**Period:** 8/19/12 through 8/25/12

### Action Items/Safety:

- Loss Prevention System (LPS) tools
  - Loss Prevention Observation (LPO) – 2 (74)
  - Job Safety Analysis (JSAs) – 0 (7)
  - Near Loss – 0 (5)
  - Minor Equipment Damage – 0 (3)
  - Incidents – 0 (2)
  - Stop Work Authority 0 – (7)



Prepared by EJ Suardini, August 28, 2012

*Dust suppression of haul routes*

### Progress Legend

**Blue – (Complete)  
Excavation of Slag**

**Green – (Complete)  
Excavation of Impacted soil  
beneath Slag**

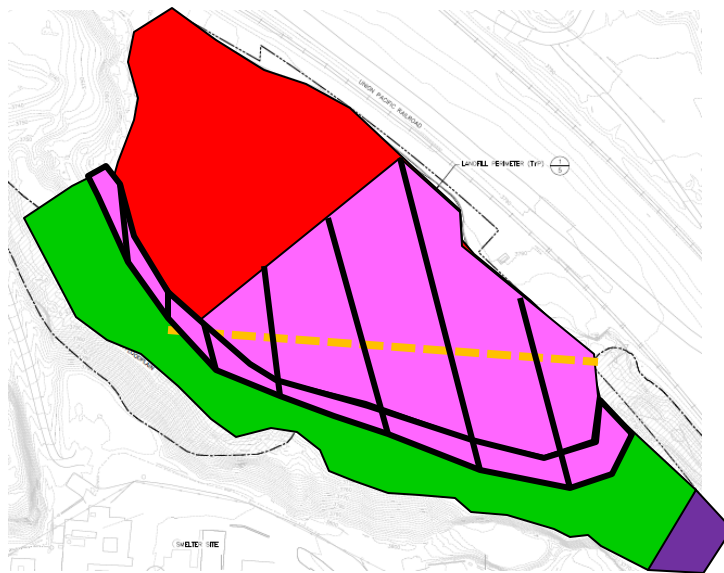
**Red – (Complete) Mass  
Excavation Activity**

**Red (Hatch) – Current Work  
Area**

**Orange – Removed  
Sanitary/Storm Sewer Piping**

**Purple – Earthen Buttress  
(Complete)**

**Pink (Hatch) – Backfill Activities**



Estimated Weekly Volume				
	Estimated Quantity of Slag Removed (Tons)	Estimated Quantity of Mass Excavation (Tons)*	Estimated Quantity of Structural Fill Material Installed (Tons)	Estimated Quantity of Subgrade Prepared (Tons)
Weekly Total	0	0	10,080	0
Total to Date	329,667	293,563	96,680	0

\*Quantity includes the excavation of soil impacted material beneath slag.