

## Weekly Construction Progress Report #1

Period: 10/24/11 through 10/30/11

### Project Work Performed:

- Mobilized select heavy equipment and ARCADIS labor to the site. Site personnel were provided a site health and safety orientation.
- Began the installation of BMPs including 9-inch straw wattles around the designated staging area.
- Installed orange construction fencing along the northern property boundary to identify the railroad right-of-way.
- Completed initial construction staking of the Category 1 Landfill footprint.
- Began site preparation activities including construction material shed/trailer setup, sanitary/refuse setup, access road improvements and installation of temporary security fencing.
- Completed the investigation and clearance of underground and overhead utilities including state one call.
- Began separating and stockpiling miscellaneous surface debris within the Category 1 Landfill footprint.
- Completed a seismic ripability survey within the limits of the Category 1 Landfill.
- Began compliance monitoring including air monitoring, weather monitoring, SWPPP monitoring and fugitive dust monitoring.

### Work Projected Next Week:

- Continue to mobilize select heavy equipment and ARCADIS labor to the site.
- Continue site preparation activities.
- Complete a series of test pits within the Category 1 Landfill footprint to collect valuable geotechnical data.
- Secure City of El Paso grading permit.
- Begin the excavation, loading, hauling and stockpiling of slag material from within the Category 1 Landfill footprint to the designated staging area.
- Continue compliance monitoring including air monitoring, weather monitoring, SWPPP monitoring and fugitive dust monitoring.

## Former ASARCO Smelter Facility

## Category 1 Landfill Construction

El Paso, TX



*Taking delivery of select heavy equipment*



*Installation of temporary site security fencing along Piasano Drive.*



*Bulldozer grading existing access road.*

## Weekly Construction Progress Report #1 (Continued)

**Period:** 10/24/11 through 10/30/11

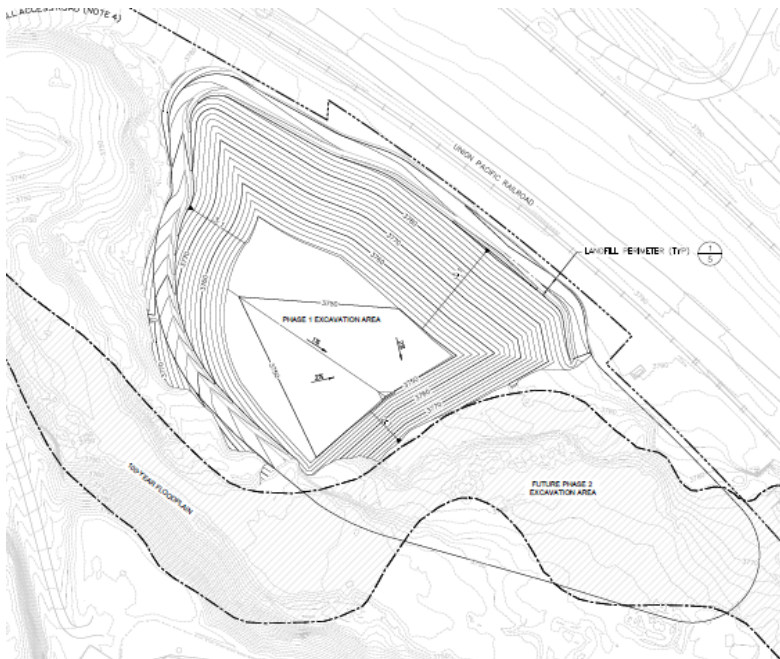
### Action Items/Safety:

- Loss Prevention System (LPS) tools
  - Loss Prevention Observation (LPO) – 1 (1)
  - Job Safety Analysis (JSAs) – 2 (2)
  - Near Loss – 0 (0)
  - Incidents – 0 (0)
  - Stop Work Authority 1 – (1)

Prepared by EJ Suardini, November 1, 2011



*Applying water to access roads for dust control.*



### **Progress Legend**

**Blue –  
Excavation  
Complete**

### Estimated Weekly Volume

	Estimated Quantity of Slag Removed (Tons)	Estimated Quantity of Mass Excavation (Tons)	Estimated Quantity of Toe Berm Material Installed (Tons)	Estimated Quantity of Subgrade Prepared (Tons)
Weekly Total	0	0	0	0
Total to Date	0	0	0	0