

## Weekly Construction Progress Report #2

Period: 10/31/11 through 11/06/11

### Project Work Performed:

- Continued to mobilize select heavy equipment and ARCADIS labor to the site. Site personnel were provided a site health and safety orientation.
- Continued the installation of BMPs including 9-inch straw wattles around the designated staging area and silt fencing around the Category 1 Landfill.
- Continued site preparation activities including construction of safety berms along specified access roads.
- Completed a series of test pits within the Category 1 Landfill footprint and collected geotechnical data.
- Secured City of El Paso grading permit.
- Completed separating and stockpiling miscellaneous surface debris within the Category 1 Landfill footprint. Stockpiled material was relocated to an area specified by ERM.
- Began the excavation, loading, hauling and stockpiling of slag material from within the Category 1 Landfill footprint to the designated staging area.
- Began compliance monitoring including air monitoring, weather monitoring, SWPPP monitoring and fugitive dust monitoring.

### Work Projected Next Week:

- Continue to mobilize select heavy equipment and ARCADIS labor to the site.
- Continue the excavation, loading, hauling and stockpiling of slag material from within the Category 1 Landfill footprint to the designated staging area.
- Begin preparation to begin the excavation, loading, hauling and stockpiling of targeted mass excavation materials.
- Continue compliance monitoring including air monitoring, weather monitoring, SWPPP monitoring and fugitive dust monitoring.

## Former ASARCO Smelter Facility

## Category 1 Landfill Construction

El Paso, TX



*Loading Slag from within the Category 1 Landfill footprint.*



*Dumping Slag within designated stockpile area.*



*Dust control and stockpile management activities within designated stockpile area.*

**Weekly Construction Progress Report #2  
(Continued)**

**Period:** 10/31/11 through 11/06/11

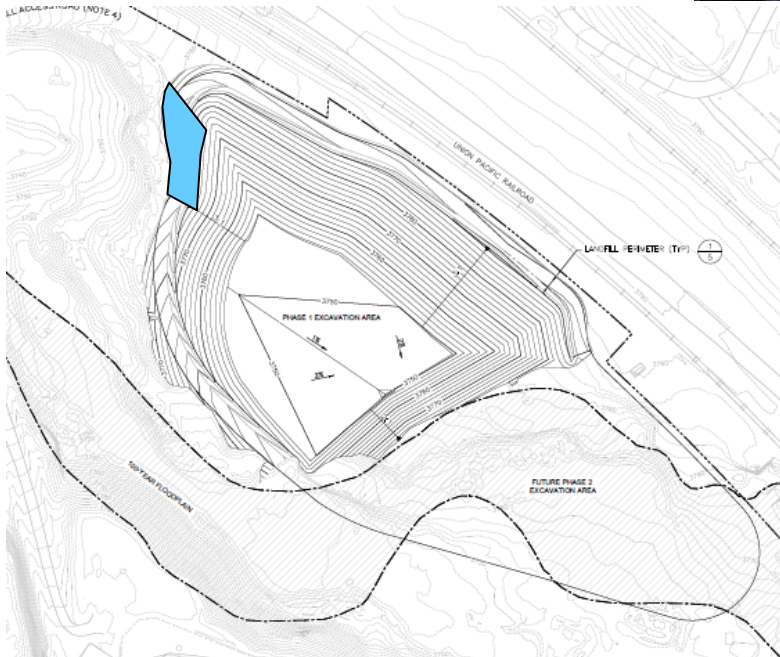
Action Items/Safety:

- Loss Prevention System (LPS) tools
  - Loss Prevention Observation (LPO) – 1 (2)
  - Job Safety Analysis (JSAs) – 1 (3)
  - Near Loss – 1 (1)
  - Incidents – 0 (0)
  - Stop Work Authority 0 – (1)

Prepared by EJ Suardini, November 8, 2011



*Excavation of Slag from Southwest corner of Category 1 Landfill.*



**Progress  
Legend**

**Blue –  
Excavation of  
Slag Complete**

**Estimated Weekly Volume**

	Estimated Quantity of Slag Removed (Tons)	Estimated Quantity of Mass Excavation (Tons)	Estimated Quantity of Toe Berm Material Installed (Tons)	Estimated Quantity of Subgrade Prepared (Tons)
Weekly Total	960	0	0	0
Total to Date	960	0	0	0