

Weekly Construction Progress Report #5

Period: 11/21/11 through 12/3/11

Project Work Performed:

- Completed the excavation, loading, hauling and stockpiling of slag material from within the Category 1 Landfill footprint to the designated staging area.
- Completed soil screening using XRF and collecting soil samples for laboratory analysis. A general 2-foot cut was excavated over the entire landfill footprint.
- Continued the excavation, loading, hauling and stockpiling of targeted mass excavation materials.
- Continued interim construction survey staking to identify final subgrade elevations.
- Continued compliance monitoring including air monitoring, weather monitoring, SWPPP monitoring and fugitive dust monitoring.
- Completed three investigation borings along with a series of test pits within the PBA.
- No construction activities were completed from November 23rd through November 26th due to the Thanksgiving holiday weekend.

Work Projected Next Week:

- Continue the excavation, loading, hauling and stockpiling of targeted mass excavation materials.
- Mobilize an excavator equipped with a hydraulic breaker to size large sandstone to allow for loading, hauling and stockpiling activities.
- Continue interim construction survey staking to identify subgrade elevations
- Continue compliance monitoring including air monitoring, weather monitoring, SWPPP monitoring and fugitive dust monitoring.

Former ASARCO Smelter Facility

Category 1 Landfill Construction

El Paso, TX



Loading targeted mass excavation materials from within the Category 1 Landfill footprint.



Excavation activities within the Category 1 Landfill footprint.



Drilling activities associated with investigation borings within PBA.

Weekly Construction Progress Report #5 (Continued)

Period: 11/21/11 through 12/3/11

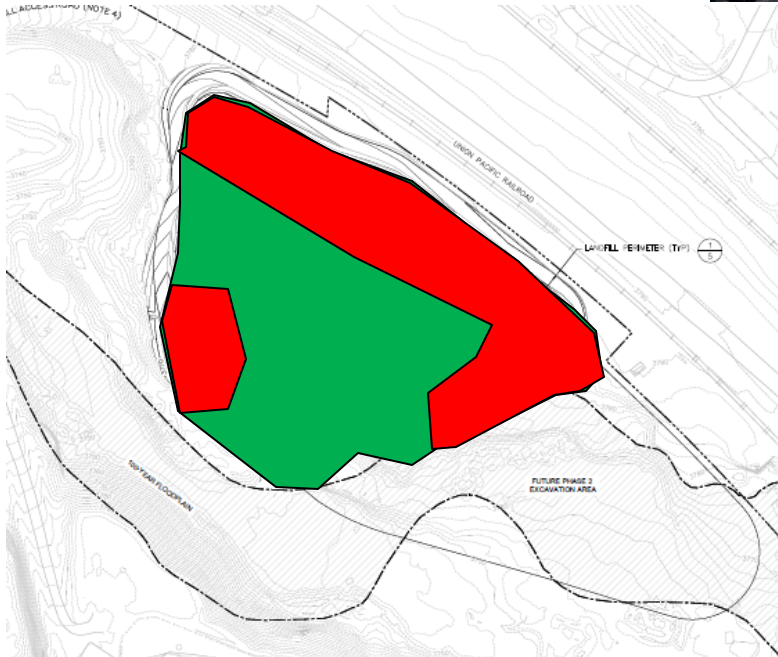
Action Items/Safety:

- Loss Prevention System (LPS) tools
 - Loss Prevention Observation (LPO) – 3 (7)
 - Job Safety Analysis (JSAs) – 0 (3)
 - Near Loss – 0 (2)
 - Incidents – 0 (1)
 - Stop Work Authority 0 – (2)

Prepared by EJ Suardini, December 7, 2011



Dust control activities in and around the stockpile area.



Progress Legend

**Blue – (Complete)
Excavation of Slag**

**Green – (Complete)
Excavation of Impacted soil
beneath Slag**

Red – Mass Excavation Activity

Estimated Weekly Volume

	Estimated Quantity of Slag Removed (Tons)	Estimated Quantity of Mass Excavation (Tons)*	Estimated Quantity of Toe Berm Material Installed (Tons)	Estimated Quantity of Subgrade Prepared (Tons)
Weekly Total	680	31,320	0	0
Total to Date	26,835	53,995	0	0

***Quantity includes the excavation of soil impacted material beneath slag.**