

Weekly Construction Progress Report #54

Period: 12/2/12 through 12/8/12

Project Work Performed:

- Continued interim construction survey staking to identify subgrade elevations.
- Continued compliance monitoring including air monitoring, weather monitoring, SWPPP monitoring and fugitive dust monitoring.
- Continued to screen and process CAT II soils to meet structural fill material conformance specifications associated with the CAT II Placement Plan.
- Continued to load, haul, place, compact and grade CAT II materials within the Ore Unloading Basement.
- Continued to collect field nuclear density testing to confirm compaction requirements.
- Began the installation of the POTW tie-in.

Work Projected Next Week:

- Continue interim construction survey staking to identify subgrade elevations.
- Continue compliance monitoring including air monitoring, weather monitoring, SWPPP monitoring and fugitive dust monitoring.
- Continue to screen and process CAT II soils to meet structural fill material conformance specifications associated with the CAT II Placement Plan.
- Continue to load, haul, place, compact and grade CAT II materials within the Ore Unloading Basement.
- Continue to collect field nuclear density testing to confirm compaction requirements.

Former ASARCO Smelter Facility

Category 1 Landfill Construction

El Paso, TX



Installation of CAT II soils within the Ore Unloading Basement



Placement of CAT II soils within the Ore Unloading Basement



Compaction of CAT II soils within the Ore Unloading Basement

Weekly Construction Progress Report #54 (Continued)

Period: 12/2/12 through 12/8/12

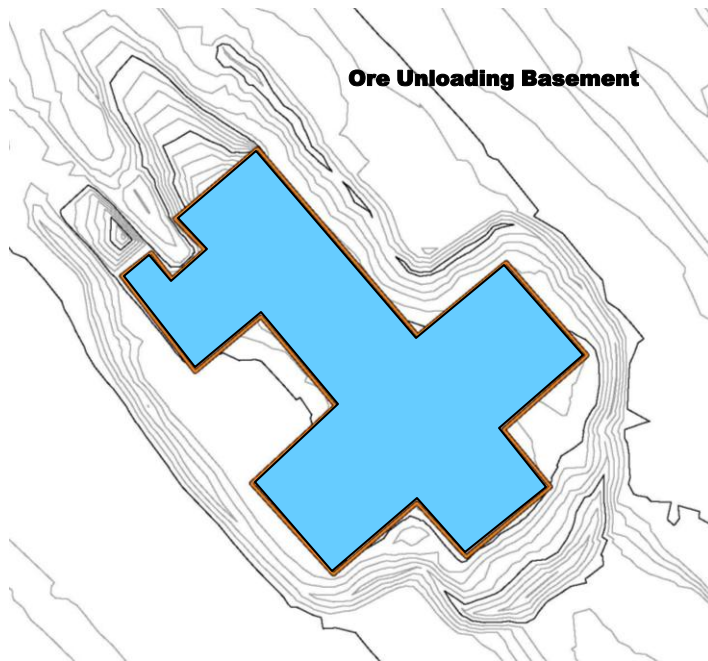
Action Items/Safety:

- Loss Prevention System (LPS) tools
 - Loss Prevention Observation (LPO) – 2 (102)
 - Job Safety Analysis (JSAs) – 0 (8)
 - Near Loss – 0 (7)
 - Minor Equipment Damage – 0 (3)
 - Incidents – 0 (2)
 - Stop Work Authority 0 – (7)



POTW Tie-In Installation

Prepared by EJ Suardini, December 11, 2012



Progress Legend

Blue – Ongoing placement of structural fill

Estimated Weekly Volume

	Estimated Quantity of CAT II Placement (Tons)	Estimated Quantity of East Borrow Excavation	Estimated Quantity of Structural Fill Material Installed PBA and CAT 1 (Tons)	Estimated Quantity of Subgrade Prepared (Tons)
Weekly Total	10,640	0	6,400	0
Total to Date	16,480	293,563	186,860	0