

## Weekly Construction Progress Report #6

Period: 12/4/11 through 12/10/11

### Project Work Performed:

- Continued the excavation, loading, hauling and stockpiling of targeted mass excavation materials.
- Mobilized an excavator equipped with a hydraulic breaker to size large sandstone to allow for loading, hauling and stockpiling activities.
- Began breaking dense rock layers with the excavator equipped with a hydraulic breaker in areas the large dozer could not rip through the material.
- Continued interim construction survey staking to identify final subgrade elevations.
- Continued compliance monitoring including air monitoring, weather monitoring, SWPPP monitoring and fugitive dust monitoring.

### Work Projected Next Week:

- Continue the excavation, loading, hauling and stockpiling of targeted mass excavation materials.
- Continue sizing large sandstone pieces with an excavator equipped with a hydraulic breaker to all for loading, hauling and stockpiling activities.
- Continue breaking dense rock layers with the excavator equipped with a hydraulic breaker in areas the large dozer could not rip through the material
- Continue interim construction survey staking to identify subgrade elevations
- Continue compliance monitoring including air monitoring, weather monitoring, SWPPP monitoring and fugitive dust monitoring.

## Former ASARCO Smelter Facility

### Category 1 Landfill Construction

El Paso, TX



*Loading targeted mass excavation materials from within the Category 1 Landfill footprint.*



*Excavation activities within the Category 1 Landfill footprint.*



*Ripping activities within the Category 1 Landfill footprint.*

## Weekly Construction Progress Report #6 (Continued)

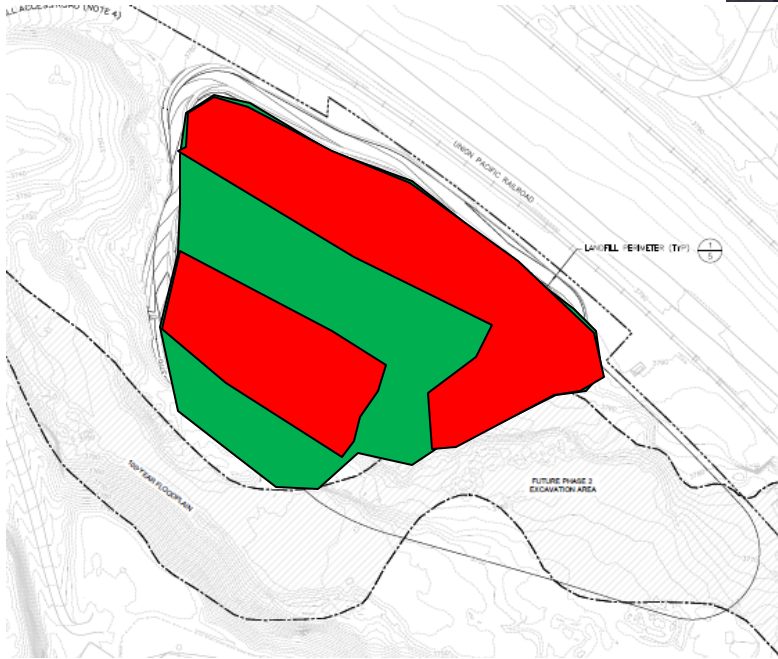
**Period:** 12/4/11 through 12/10/11

### Action Items/Safety:

- Loss Prevention System (LPS) tools
  - Loss Prevention Observation (LPO) – 2 (9)
  - Job Safety Analysis (JSAs) – 0 (3)
  - Near Loss – 0 (2)
  - Minor Equipment Damage – 2 (2)
  - Incidents – 0 (1)
  - Stop Work Authority 0 – (2)



Prepared by EJ Suardini, December 14, 2011



*Dust control activities in and around the stockpile area.*

### **Progress Legend**

**Blue – (Complete)  
Excavation of Slag**

**Green - (Complete)  
Excavation of Impacted soil  
beneath Slag**

**Red – Mass Excavation  
Activity**

### Estimated Weekly Volume

	Estimated Quantity of Slag Removed (Tons)	Estimated Quantity of Mass Excavation (Tons)*	Estimated Quantity of Toe Berm Material Installed (Tons)	Estimated Quantity of Subgrade Prepared (Tons)
Weekly Total	0	28,907	0	0
Total to Date	26,835	82,902	0	0

**\*Quantity includes the excavation of soil impacted material beneath slag.**