

### Weekly Construction Progress Report #55

Period: 12/9/12 through 12/15/12

#### Project Work Performed:

- Continued interim construction survey staking to identify subgrade elevations.
- Continued compliance monitoring including air monitoring, weather monitoring, SWPPP monitoring and fugitive dust monitoring.
- Continued to screen and process CAT II soils to meet structural fill material conformance specifications associated with the CAT II Placement Plan.
- Continued to load, haul, place, compact and grade CAT II materials within the Ore Unloading Basement.
- Continued to collect field nuclear density testing to confirm compaction requirements.
- Completed the installation of the POTW tie-in.

#### Work Projected Next Week:

- Continue interim construction survey staking to identify subgrade elevations.
- Continue compliance monitoring including air monitoring, weather monitoring, SWPPP monitoring and fugitive dust monitoring.
- Continue to screen and process CAT II soils to meet structural fill material conformance specifications associated with the CAT II Placement Plan.
- Continue to load, haul, place, compact and grade CAT II materials within the Ore Unloading Basement.
- Continue to collect field nuclear density testing to confirm compaction requirements.



*Installation of CAT II soils within the Ore Unloading Basement*



*Placement of CAT II soils within the Ore Unloading Basement*



*Screening of CAT II soils for Ore Unloading Basement*

## Weekly Construction Progress Report #55 (Continued)

**Period:** 12/9/12 through 12/15/12

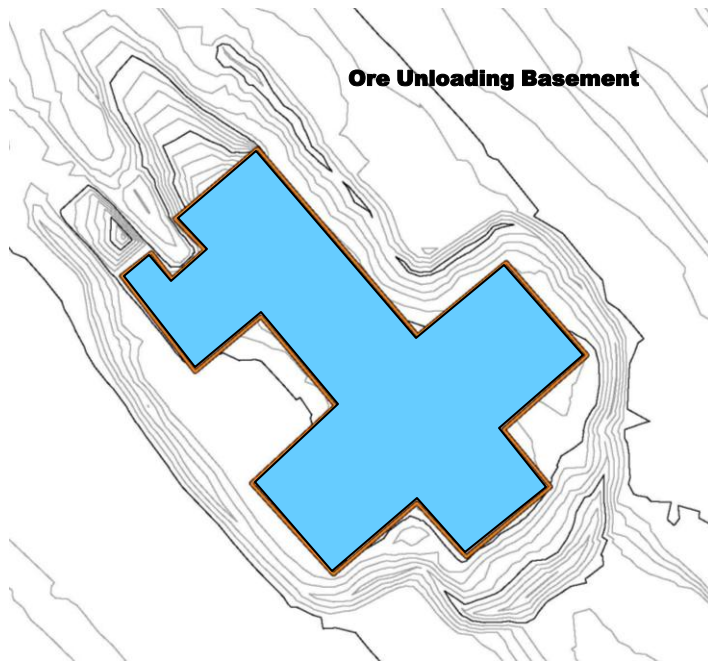
### Action Items/Safety:

- Loss Prevention System (LPS) tools
  - Loss Prevention Observation (LPO) – 2 (104)
  - Job Safety Analysis (JSAs) – 0 (8)
  - Near Loss – 0 (7)
  - Minor Equipment Damage – 0 (3)
  - Incidents – 0 (2)
  - Stop Work Authority 0 – (7)

Prepared by EJ Suardini, December 18, 2012



*Newly installed valve associated with POTW Tie-In*



### Progress Legend

**Blue** – Ongoing placement of structural fill

### Estimated Weekly Volume

	Estimated Quantity of CAT II Placement (Tons)	Estimated Quantity of East Borrow Excavation	Estimated Quantity of Structural Fill Material Installed PBA and CAT 1 (Tons)	Estimated Quantity of Subgrade Prepared (Tons)
Weekly Total	7,440	0	0	0
Total to Date	23,920	293,563	186,860	0