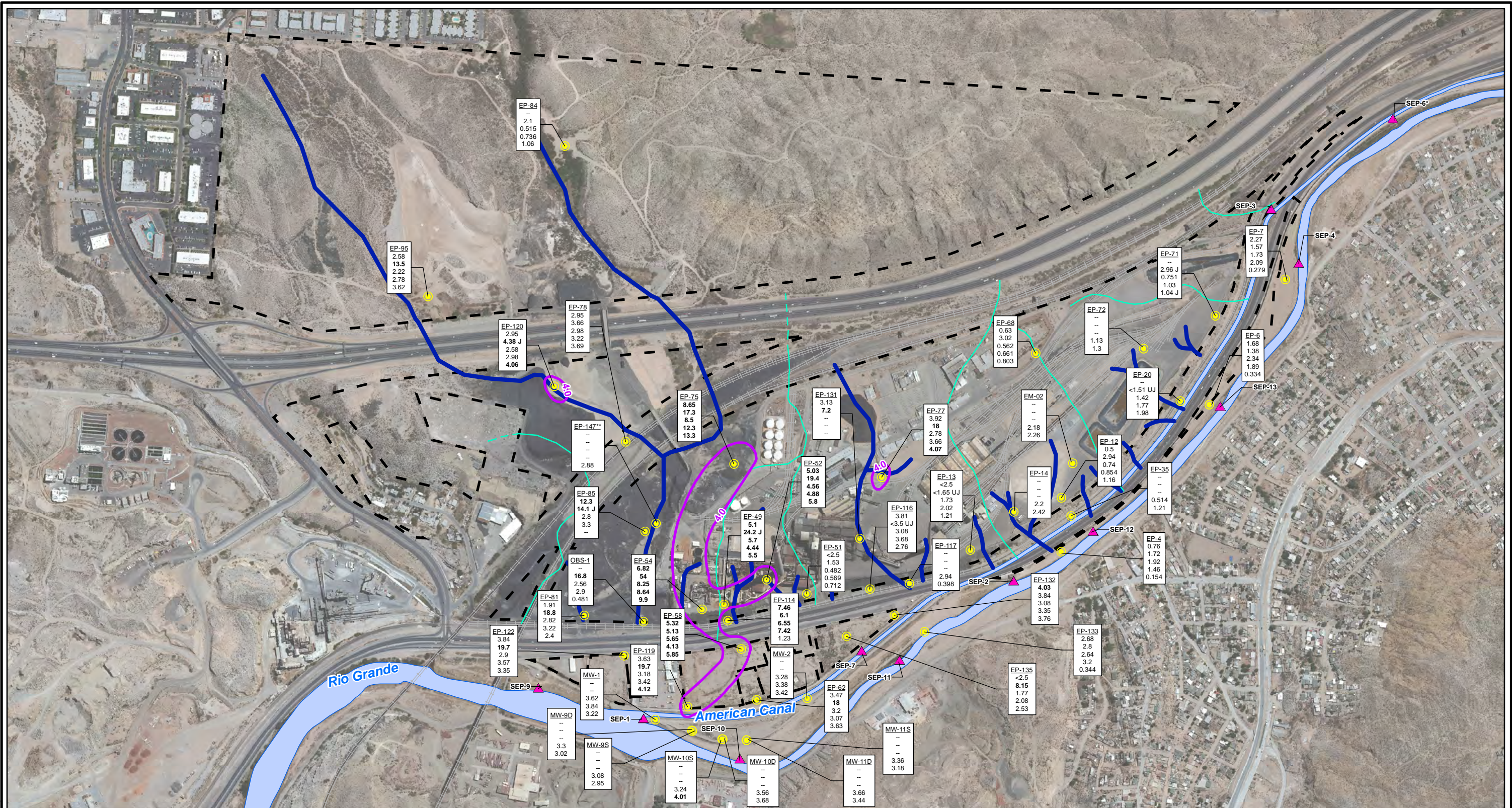


CITY: Highlands Ranch DIV/GROUP: GIS DB: BG
 Project (Project #):
 Path: I:\ASARCO_ElPaso\GIS\MXD\RI_ Revised\Fig 4-68 Fluoride_2010to2012.mxd Date: 9/13/2013 Time: 3:54:00 PM



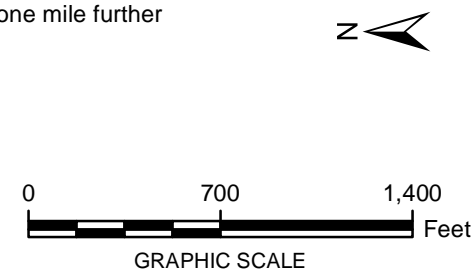
LEGEND:

- Monitoring Wells
- Surface Water Stations
- Historical Arroyo Trace Lines
- Property Boundary
- Historical Drainage Divide
- Total Fluoride Contours (mg/L; Fall 2012)
(Dashed where inferred)

Note:
 Fluoride Screening Level = 4.0 mg/L (EPA Drinking Water MCL)
 EPA = Environmental Protection Agency
 J = The reported value was obtained from a reading that was less than reporting limit but greater than or equal to the method detection limit.
 UJ = Estimated reporting limit
 MCL = Maximum Contaminant Level
 mg/L = milligrams per liter
 < = Non detect at the reporting limit shown
 -- = No Result

Bolded Value = result exceeds PCL
 *Actual location of SEP-6 is approximately one mile further downstream on the American Canal.
 **Data collected in October 2012

Well ID	Sample Date	Fluoride (mg/L)
EP-54	Fall 2010	6.82
54	Spring 2011	54
8.25	Fall 2011	8.25
8.64	Spring 2012	8.64
9.9	Fall 2012	9.9



FORMER EL PASO SMELTER SITE
EL PASO, TEXAS

**FLUORIDE DISTRIBUTION IN GROUNDWATER
FALL 2010 - FALL 2012**

**FIGURE
4-70**