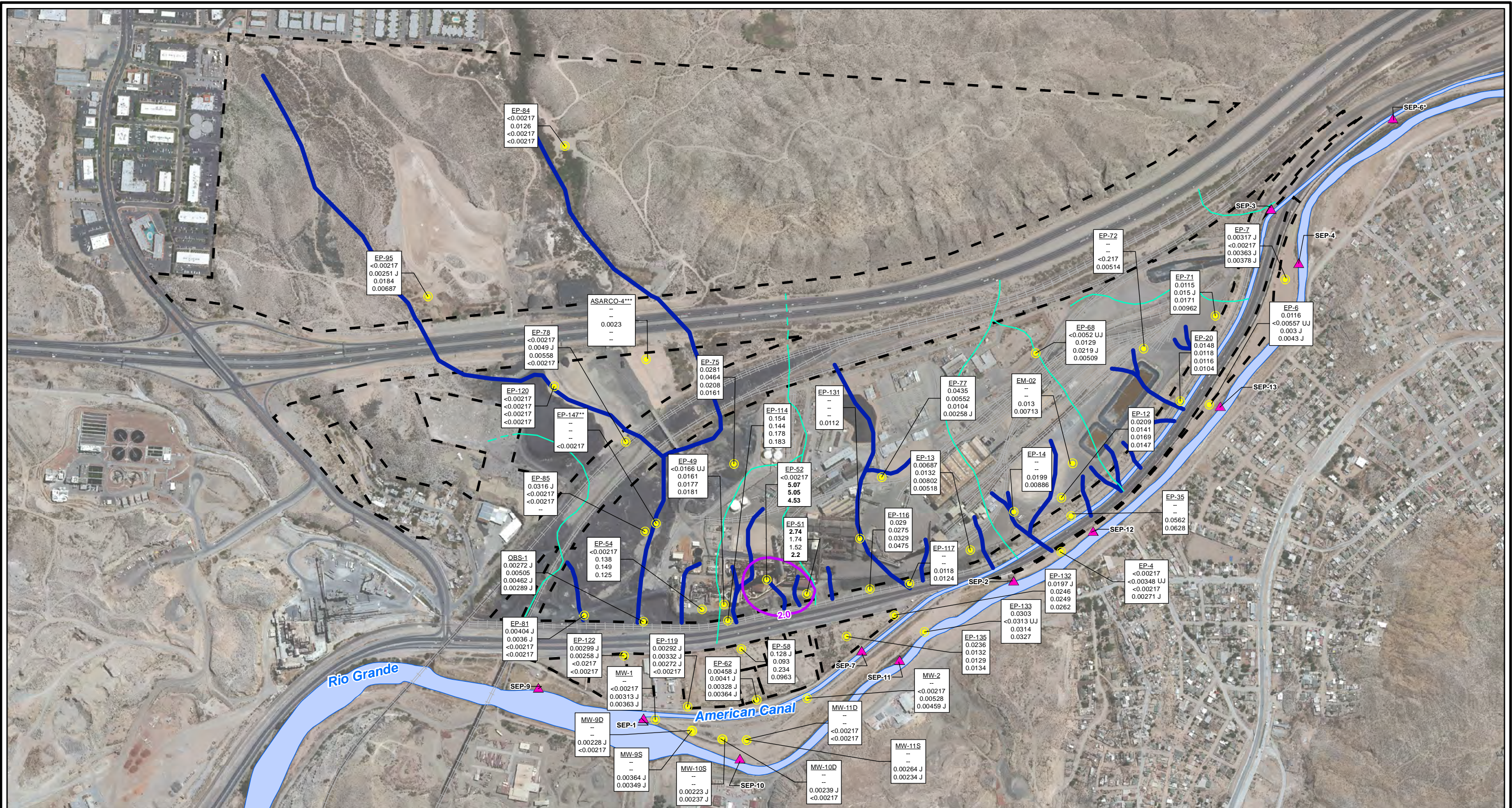


CITY: Highlands Ranch DIV/GROUP: GIS DB: BG  
 Project (Project #):  
 Path: I:\ASARCO - El Paso\GIS\MXD\RIJ\_ Revised\Fig 4-72 Nickel\_2011to2012.mxd Date: 9/13/2013 Time: 3:54:00 PM

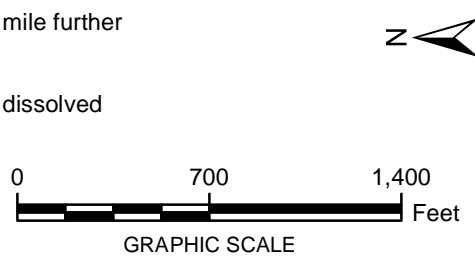


- LEGEND:**
- Monitoring Wells
  - ▲ Surface Water Stations
  - Historical Arroyo Trace Lines
  - Property Boundary
  - Historical Drainage Divide
  - Total Nickel Contours (mg/L; Fall 2012)

**Note:**  
 Nickel Screening Level = 2.0 mg/L(RRR Groundwater Industrial)  
 J = The reported value was obtained from a reading that was less than reporting limit but greater than or equal to the method detection limit.  
 UJ = Estimated reporting limit  
 mg/L = milligrams per liter  
 RRR = Risk Reduction Rules  
 < = Non detect at the reporting limit shown  
 -- = No Result

**Bolded Value = result exceeds PCL**  
 \*Actual location of SEP-6 is approximately one mile further downstream on the American Canal.  
 \*\*Data collected October 2012  
 \*\*\*TxDOT monitoring well sampled June 2011; dissolved concentrations used for contouring

EP-54	Well ID
<0.00217	Spring 2011
0.138	Fall 2011
0.149	Spring 2012
0.125	Fall 2012



FORMER EL PASO SMELTER SITE  
EL PASO, TEXAS

**NICKEL DISTRIBUTION IN GROUNDWATER  
SPRING 2011 - FALL 2012**

**MALCOLM  
PIRNIE**

**FIGURE  
4-74**